

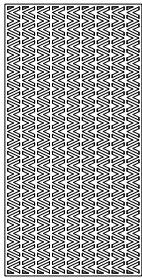
MUTO | ACOUSTICAL DIVIDER PANEL SPECIFICATIONS

Soelberg is an industry leader when it comes to decorative panels. While emphasizing design, MUTO Acoustical Divider Panels focus on function by providing sound absorption and defraction. With 6 patterns to choose from and up to 12 colorways, we offer you the designed solution of sound.

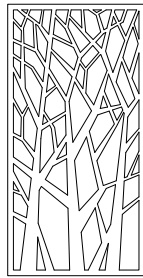
PRODUCT SPECIFICATIONS

- Panel Size:** 48" x 96"
- Core Thickness:** +/- 1/2"
- Core Material:** 100% PET Polyester
- Weight:** 1/2 lb / square foot
- Pattern Orientation:** Vertical
- Seam Repeat:** *(varies by pattern)*
- Acoustic Rating:** 0.45 - 0.90 NRC *(depending on design and installation)*
- Fire Rating:** Class A / Class 1 in accordance with ASTM-E84
- Surface Finish:** Matte

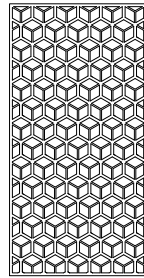
DIVIDER PATTERNS



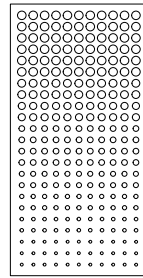
Banda



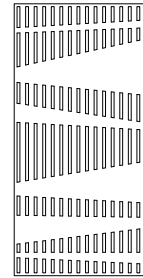
Campo



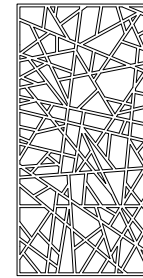
Cubini



Goccio



Luogo



Pista

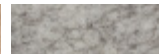
COLORWAYS



Oatmeal



Camel



Cashmere



Nordic Knit



Graphite



Midnight



Splash



Storm



Lichen



Sunshine



Clementine



Chili Pepper

INSTALLATION

Please visit www.soelbergi.com/muto-texture-panels/ for full installation recommendations.

CLEANING AND CARE

Vacuum to remove dirt and dust. Remove spills or spots immediately using a clean damp cloth. Carpet and fabric cleaners can also be used to clean. (Always test an inconspicuous area first.)