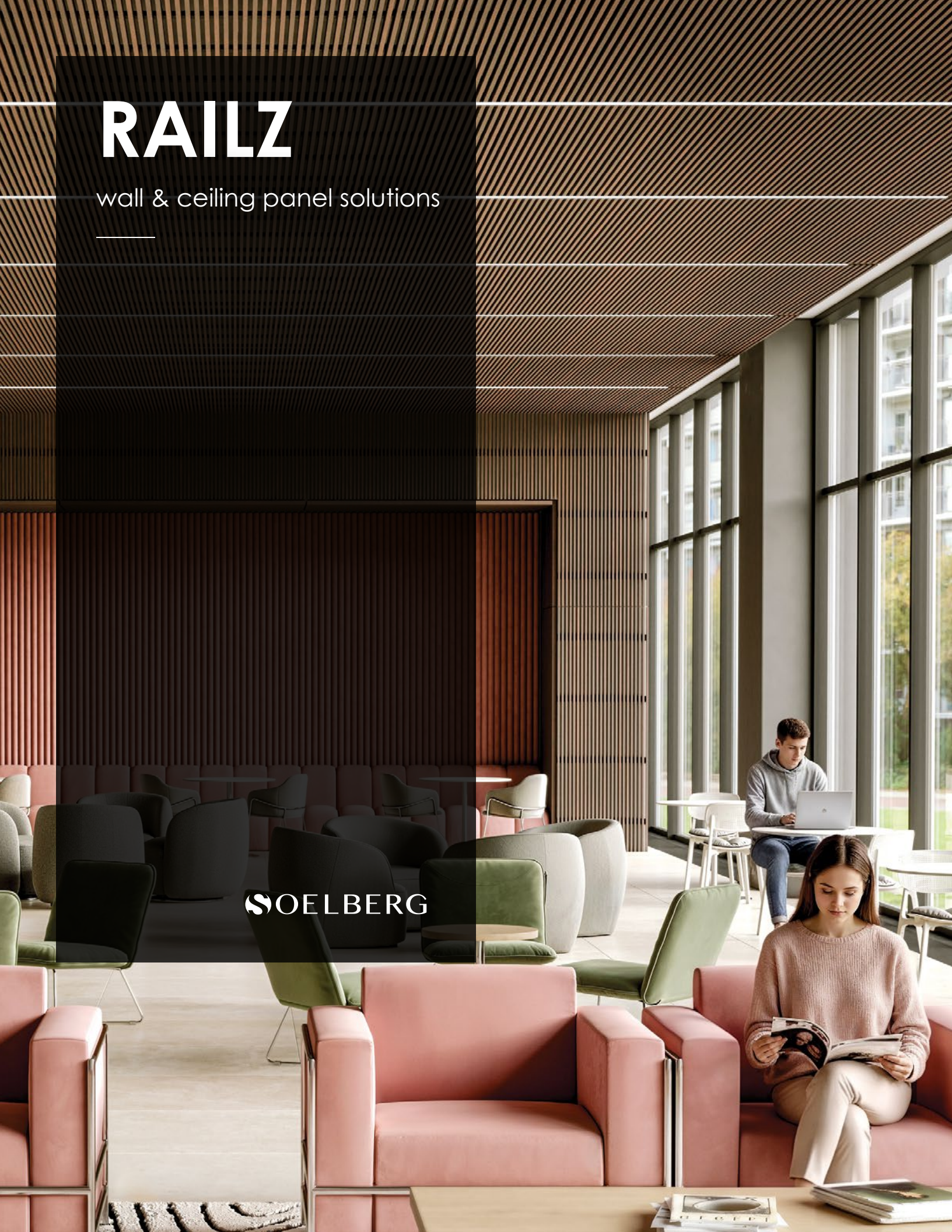


# RAILZ

wall & ceiling panel solutions

SOELBERG



# RAILZ

## wall & ceiling panel solutions

Transform your walls and ceilings into an architectural masterpiece with Railz. Featuring beautifully crafted wood grain blades available in various heights, finishes, and spacings, Railz brings warmth, depth, and dimension to any environment. We've made Railz easy to specify and just as simple to install. Railz offers the design flexibility to achieve everything from subtle linear accents to bold architectural features.

## SPECIFICATION

<b>MATERIAL</b>	TFL   PARTICLEBOARD   MDF
<b>CORE THICKNESS</b>	3/4" (BLADE)   3/4" (BRACE)
<b>PANEL SIZE</b>	12" x 48"    24" x 48" 12" x 72"    24" x 72" 12" x 96"    24" x 96"
<b>BLADE HEIGHT</b>	1.5"    3"    5"
<b>COLOR</b>	6 TFL WOOD GRAINS (BLADE) BLACK BRACE
<b>FIRE RATING</b>	CLASS A   ASTM - E84
<b>ENVIRONMENTAL</b>	PARTICLEBOARD CORES CONSIST OF 100% RECYCLED AND/OR RECOVERED FIBER.
<b>LEAD TIME</b>	4+ WEEKS (BASED ON STOCK AND QUANTITY)
<b>WARRANTY</b>	2 YEARS

## TOLERANCES, STORAGE & HANDLING

All dimensions and squareness are subject to a 3/16" tolerance.

Railz, like all wood products, will expand and contract nominally with fluctuations in moisture levels. Wood products have a potential expansion of +/- 0.33%. Railz panels will grow in high humidity conditions and shrink in low level humidity conditions. Controlled environments with maintained humidity levels of 25 - 55% are recommended. Humidity below 20% or above 80% may cause panel problems.

Railz panels should be stored flat and in an HVAC controlled environment of 65 - 75° F (18 -24° C) with relative humidity levels of 25 - 55% for at least 48 hours prior to installation. Installation areas must be enclosed and weatherproofed before installation commences.



# HOW TO SPECIFY

It is easy to specify Railz with four simple steps.

# 1

## CHOOSE WOOD GRAIN

Select from 6 wood grains for your panel blades.

# 2

## SELECT PANEL SIZE

Select panels from 12" and 24" widths and 48", 72" or 96" lengths.

# 3

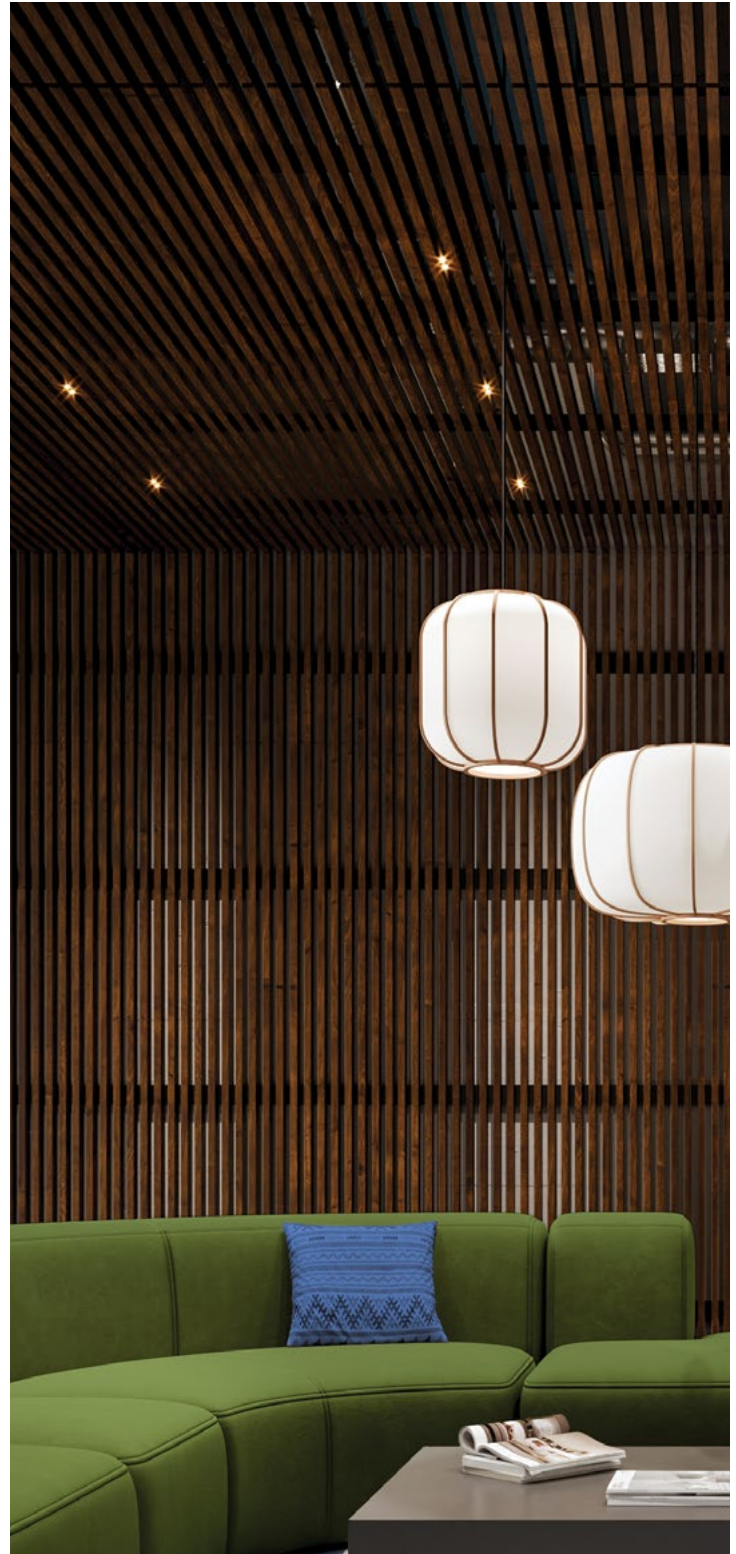
## CHOOSE BLADE HEIGHT AND SPACING

With various blade heights and spacing options, we make Railz almost as unique as you are.

# 4

## PROVIDE PANEL QUANTITY

Provide your panel quantity. From 1 panel to hundreds of panels, we've got you covered.



# WOOD GRAIN

## MATTE COLOR

6 STANDARD GRAINS  
CLASS A FIRE RATED  
PARTICLE BOARD CORE

\*\*\*Please request samples to verify grain color as monitors and printers vary.

## WHAT IS TFL?

What is TFL? Thermally fused laminate is made from resin-saturated paper that is fused directly to a wood composite core under very high heat and pressure. With textured wood grain options, TFL is an incredibly durable and affordable wood alternative.



DIVA



URBAN



ENDLESS ELM



CASUAL CHESTNUT



KARUNA ASH

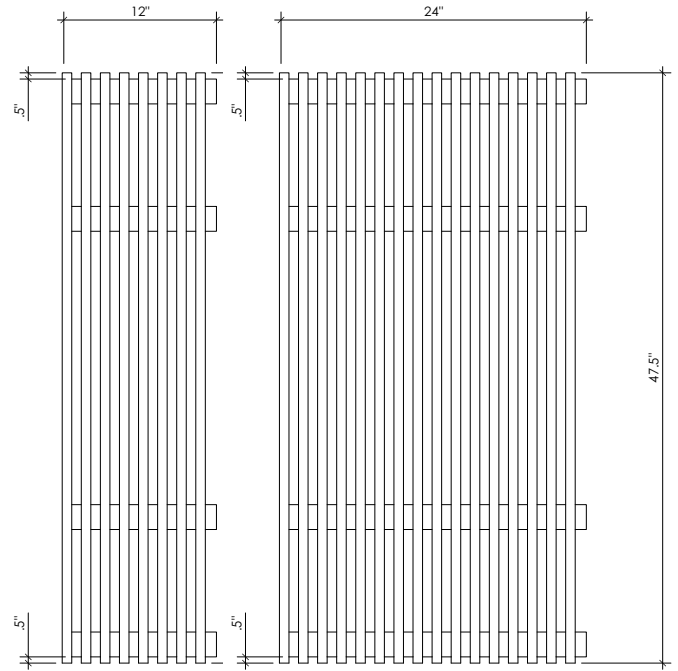


WRIGHT WALNUT

## PANEL SIZES

### 12" x 48" or 24" x 48"

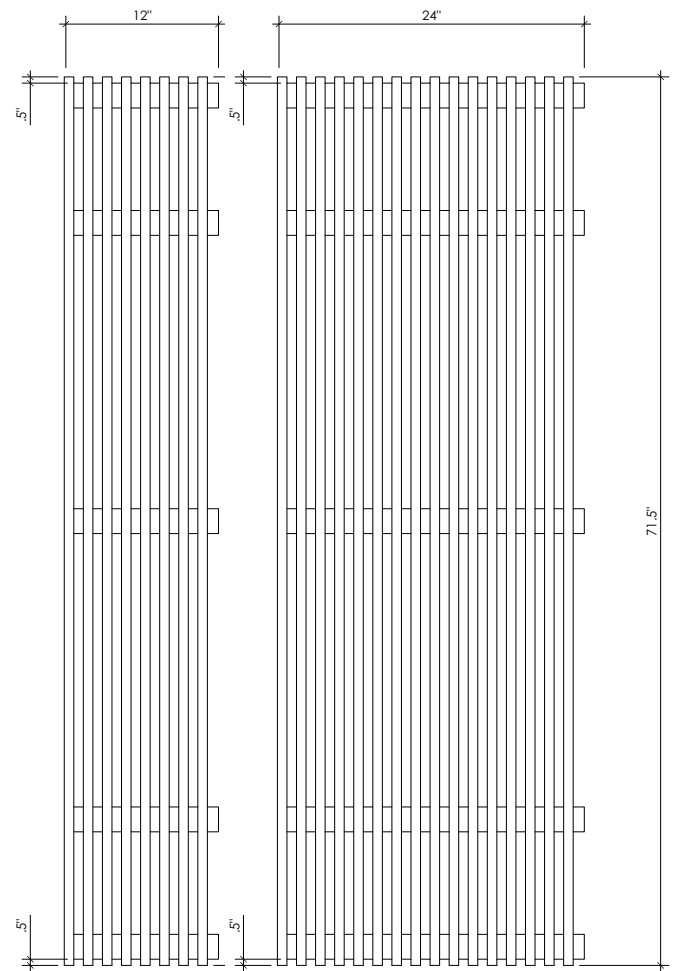
Railz panels will always have a 1/2" reveal between the blades (1/4" top and 1/4" bottom) from panel end to end.



RAILZ 12" x 48" OR 24" x 48"

### 12" x 72" or 24" x 72"

Railz panels will always have a 1/2" reveal between the blades (1/4" top and 1/4" bottom) from panel end to end.

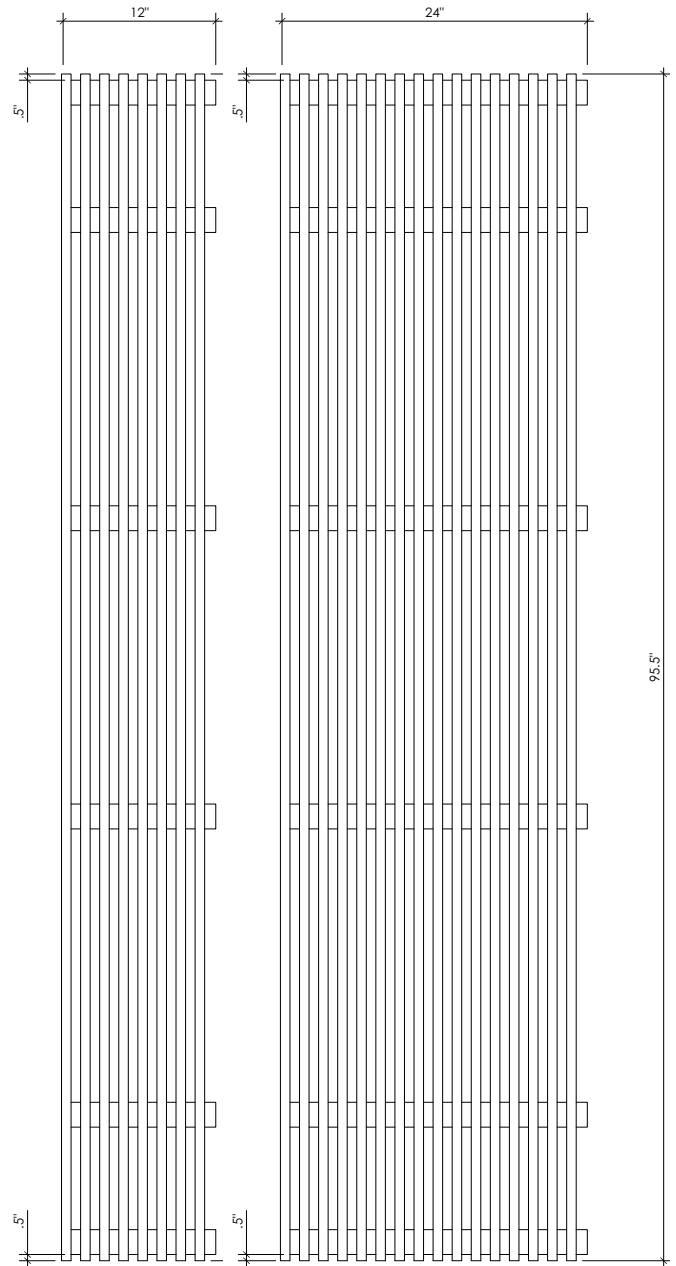


RAILZ 12" x 72" OR 24" x 72"

## PANEL SIZES CONTINUED

### 12" x 96" or 24" x 96"

Railz panels will always have a 1/2" reveal between the blades (1/4" top and 1/4" bottom) from panel end to end.



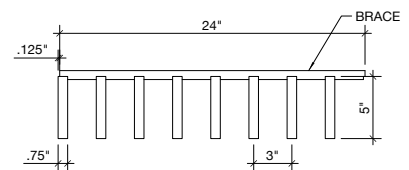
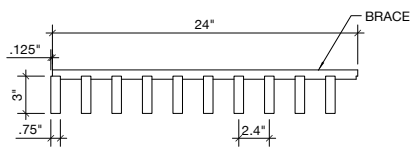
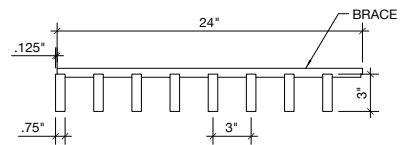
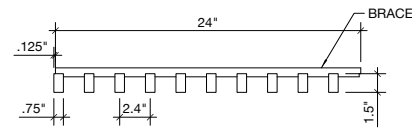
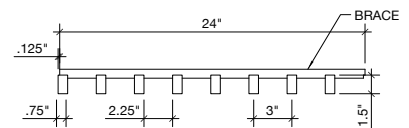
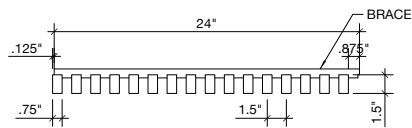
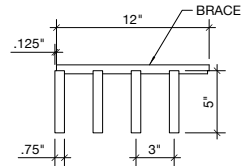
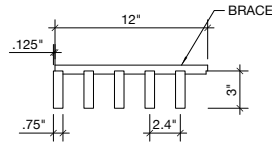
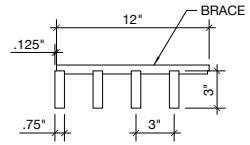
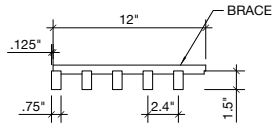
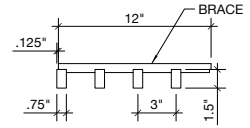
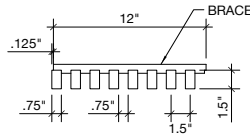
RAILZ 12" x 96" OR 24" x 96"

# BLADE DIMENSIONS

## BLADE HEIGHT & OC SPACING

Blade heights range from 1.5" to 5"  
 Spacing ranges from 1.5" OC to 3" OC

Blade heights and spacing options available as shown.



# INSTALLATION

## CEILING INSTALLATION

Direct screw attachment to T-grid is required for successful installation.

Please refer to our installation guide for coordination of attachment locations.

## WALL INSTALLATION

Direct screw attachment or the use of Zclip hardware is recommended.

Please refer to our installation guide for detailed instructions.

