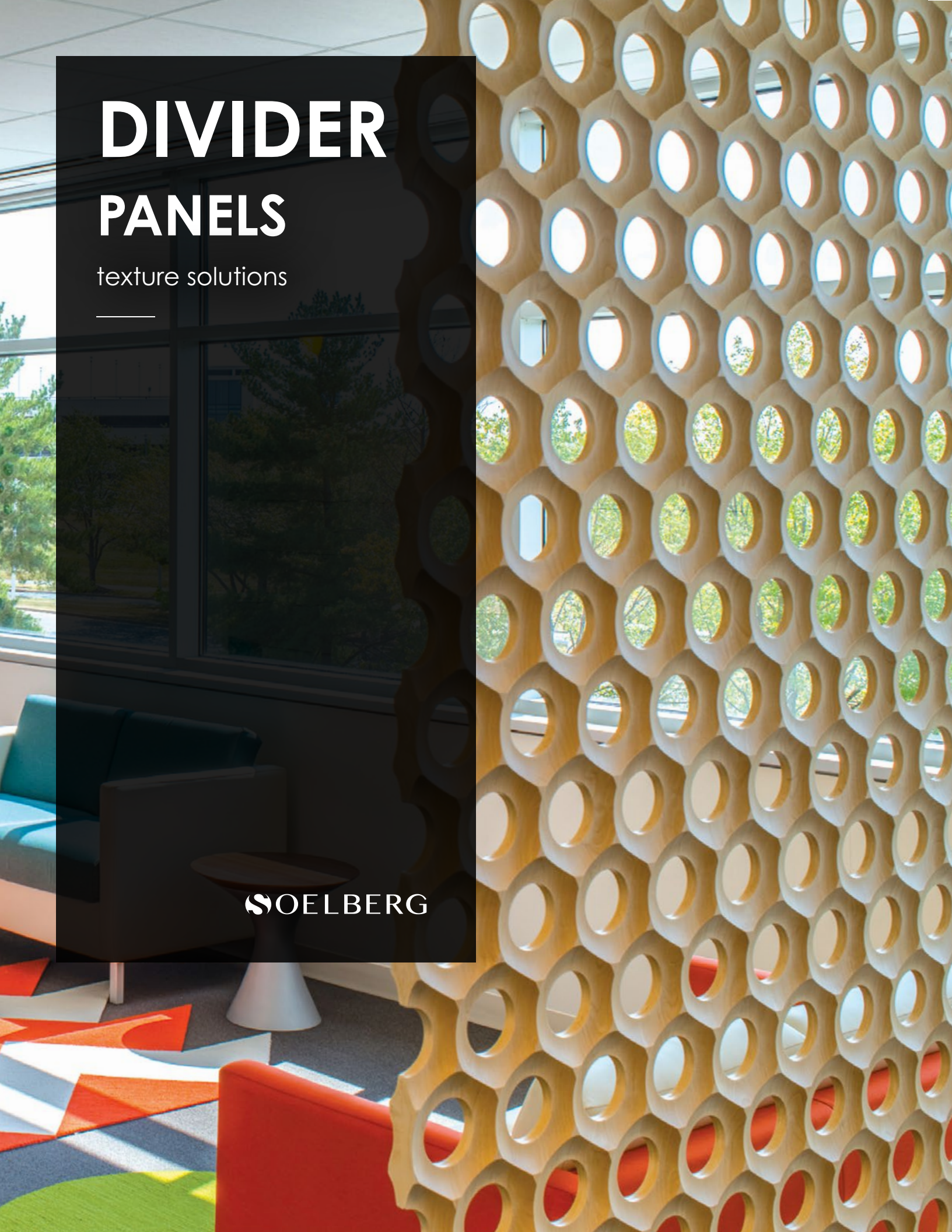


DIVIDER PANELS

texture solutions

 SOELBERG



DIVIDER PANELS

texture solutions

Does your open concept floor plan need space definition or division? Choose from a variety of bold graphic dividers or let textured dividers create touchable and functional partitioning. Choose from field paintable products or in-house 3D laminated screens and take control of every detail to make your interiors uniquely yours. With our two week lead time, your space can quickly become instantly defined.

SPECIFICATION

CORE	PREMIUM MDF OR FIRE RATED MDF
CORE THICKNESS	3/4"
PATTERNS	10 PAINT GRADE 05 3D LAMINATE FINISHED
FINISH	PAINT GRADE FIELD PAINTED 3D LAMINATE FINISHED FACE ONLY
SIZE	48" x 96"
WEIGHT	VARIABLES BY PATTERN
FIRE RATING	CLASS A ASTM - E84 OR CLASS C
LEAD TIME	2 WEEKS
WARRANTY	2 YEARS

TOLERANCES

Divider Panels are available in standard 4'x8' panels or customized and cut to size. When Divider Panels are cut to size, 3D laminate finishing is not available. All dimensions and squareness are subject to a 3/16" tolerance.

Each panel comes with a Melamine backer. Natural bow or warp is common to all wood products. Please compensate with proper installation techniques. For paint grade Divider Panels, specify with no Melamine backer for two sided field painted finishing.

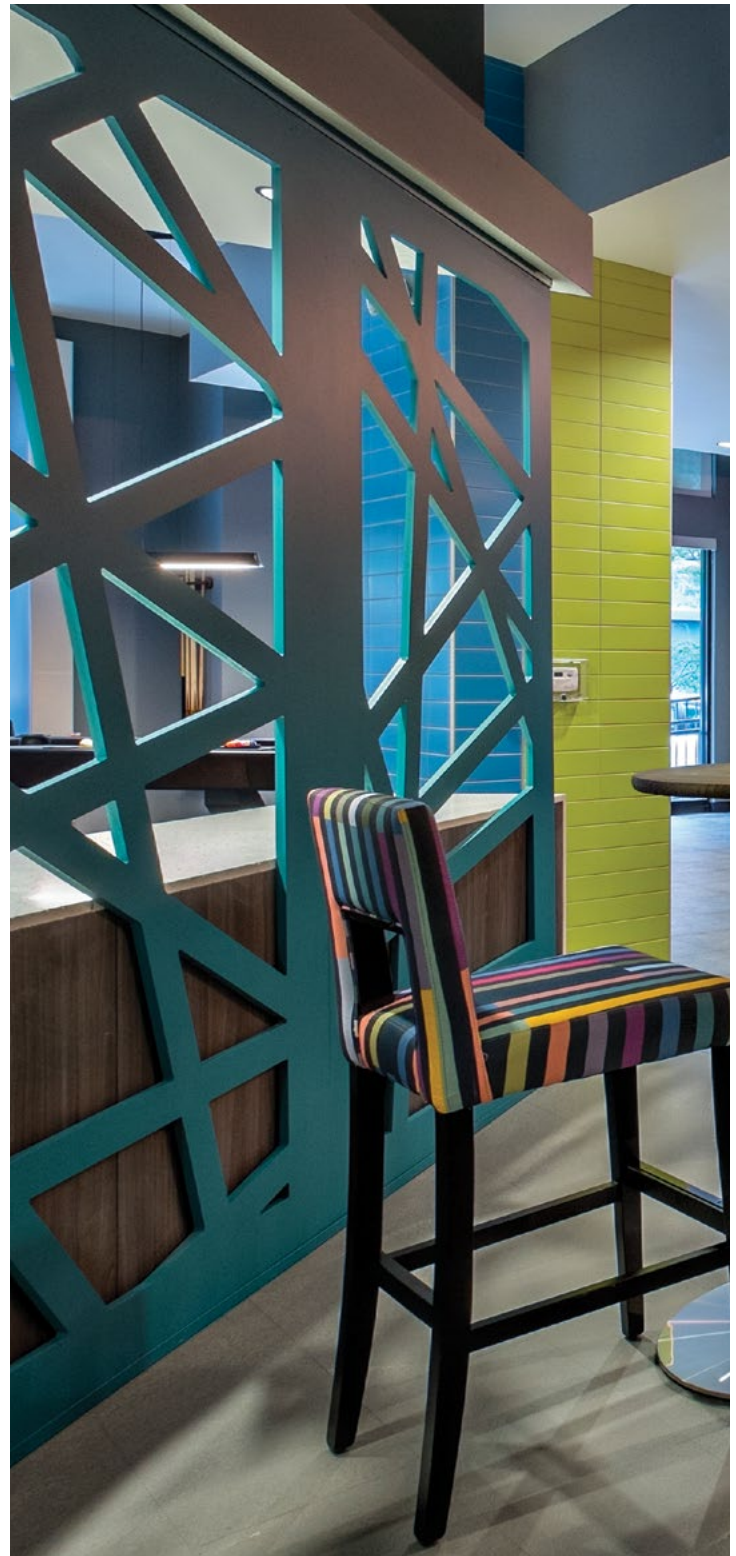
Divider Panels, like all wood products, will expand and contract nominally with fluctuations in moisture levels. Wood products have a potential expansion of +/- 0.33%. 3D Wall Panels will grow in high humidity conditions and shrink in low level humidity conditions. Controlled environments with maintained humidity levels of 25 - 55% is recommended. Humidity below 20% or above 80% may cause panel problems.

MAINTENANCE

Divider Panels should be dusted and cleaned occasionally to prevent dirt build-up. Stains should be removed with a warm diluted soap solution if necessary in combination with a non-abrasive cleaning sponge. Common cleaning products such as Windex, Simple Green, Fantastik, Formula 409 or 10:1 Water/Bleach solution are acceptable. After cleaning, the surface should be rinsed with clean water and dried with a soft non-abrasive cotton cloth. To test the suitability of a cleaning product, apply to an inconspicuous area to prevent any damage to the surface.

STORAGE & HANDLING

Divider Panels should be stored flat and in an HVAC controlled environment of 65 - 75° F (18 -24° C) with relative humidity levels of 25 - 55% for at least 48 hours prior to installation. Installation areas must be enclosed and weatherproofed before installation commences.



DIVIDER PANELS

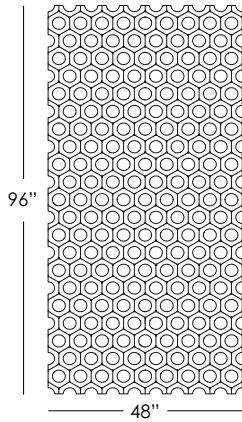
texture solutions

PATTERN | PAINT GRADE

10 PATTERNS

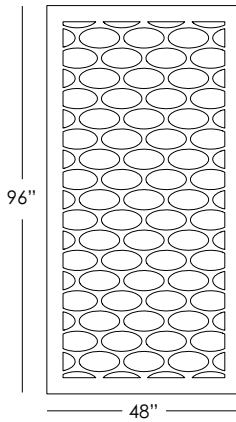
DIVIDER FRAME WIDTHS VARY BY PATTERN

SQUARE EDGE PROFILE



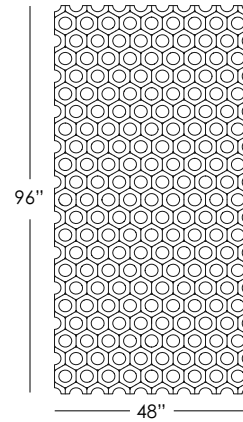
ALVEARE

Pattern Direction: Horizontal
Seam Repeat: None



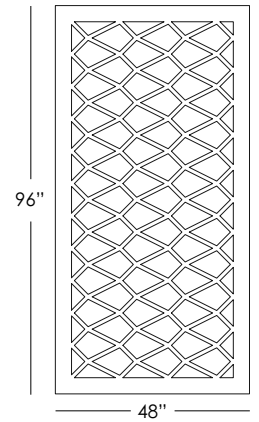
BICCHIERE

Pattern Direction: Horizontal
Seam Repeat: None



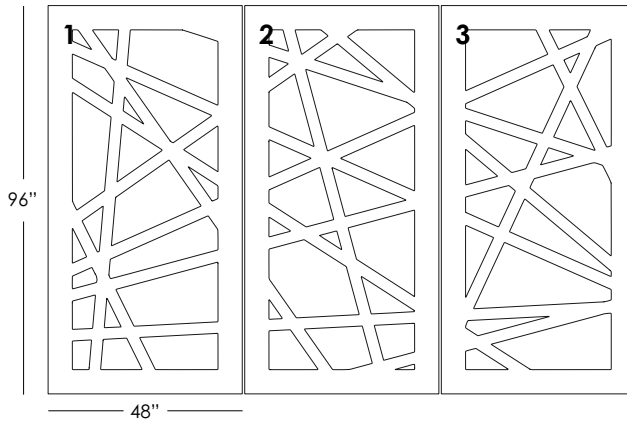
CIRCOLO

Pattern Direction: Vertical
Seam Repeat: Horizontal & Vertical



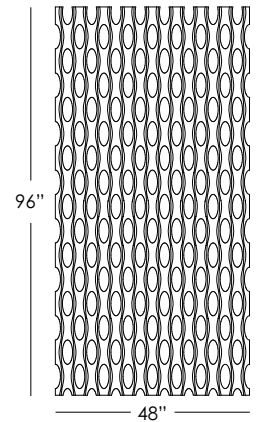
DIAMANTE

Pattern Direction: Horizontal
Seam Repeat: None



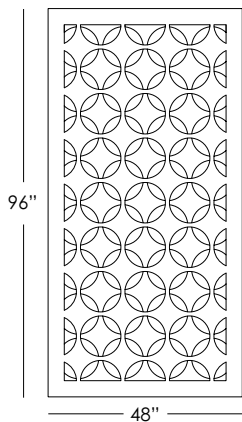
FORBICI

Pattern Direction: Horizontal
Seam Repeat: Horizontal | 3 Panels



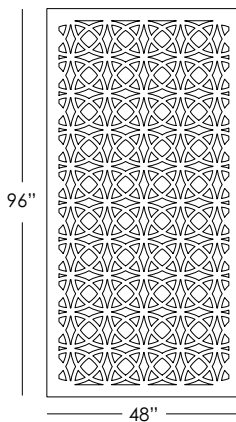
LEGNO

Pattern Direction: Vertical
Seam Repeat: Horizontal & Vertical



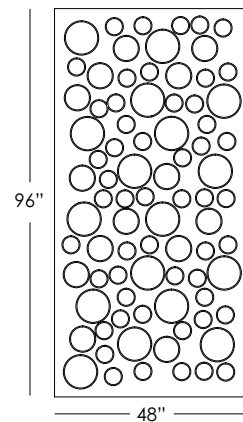
MONDO

Pattern Direction: None
Seam Repeat: None



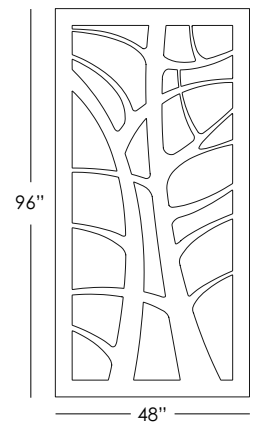
PIZZO

Pattern Direction: None
Seam Repeat: None



PORTALI

Pattern Direction: None
Seam Repeat: None



RAMO

Pattern Direction: Vertical
Seam Repeat: None

FINISH

PAINT GRADE

RAW MDF DIVIDER PANELS
NO MELAMINE BACKER

Soelberg does not provide factory paint finished 3D Wall Panels. Field finishing should be performed by a licensed professional. Professional grade primer and paint are recommended using spray finish.

COLOR CONSISTENCY

Paint Grade unfinished MDF Divider Panels will not have consistent color from panel to panel as they are made using recycled | recovered wood products. It is not recommended to leave panels unfinished or simply clear coat.

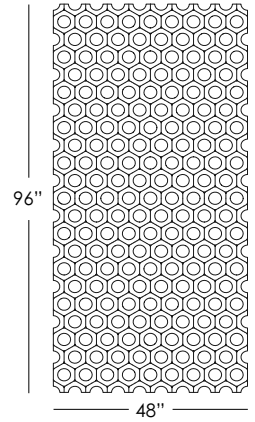


PATTERN | 3D LAMINATE FACE FINISHED

5 PATTERNS

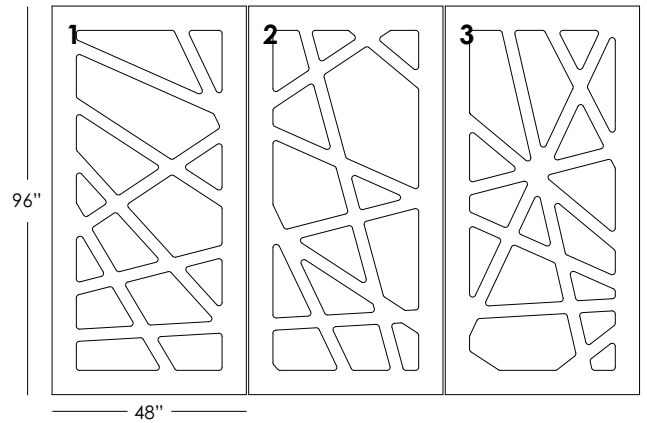
3D LAMINATE FACE FINISHED | TRUE DIVIDER, ORDER DOUBLE
QUANTITY MIRRORED PANLES INSTALLED BACK-TO-BACK

BEVELED EDGE PROFILE AND RADIUSED INTERIOR CORNERS



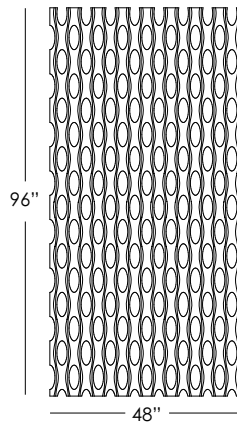
CIRCOLO

Pattern Direction: Vertical
Seam Repeat: Horizontal & Vertical



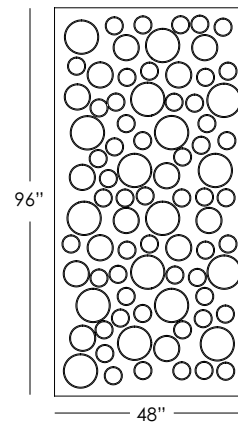
FORBICI

Pattern Direction: Horizontal
Seam Repeat: Horizontal | 3 Panels



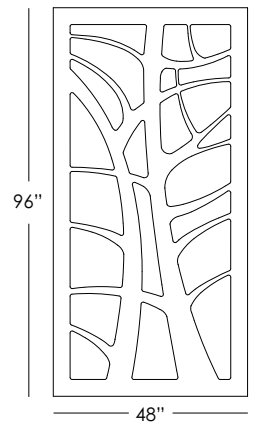
LEGNO

Pattern Direction: Vertical
Seam Repeat: Horizontal & Vertical



PORTALI

Pattern Direction: None
Seam Repeat: None



RAMO

Pattern Direction: Vertical
Seam Repeat: None

FINISH

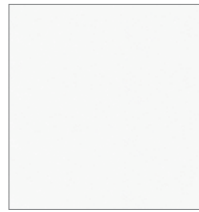
3D LAMINATE

34 COLORS

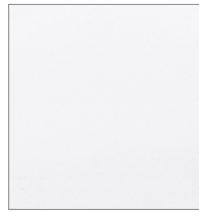
SOLID | METALLIC | WOOD GRAIN | HIGH GLOSS
MELAMINE BACKER

3D laminate (rigid thermofoil or RTF) is a thermoformed decorative surface that is cleanable and durable. Please note: Delamination will occur when 3D laminated products are exposed to heat higher than 150°. Wood grain will always run parallel to the 96" length of the panel

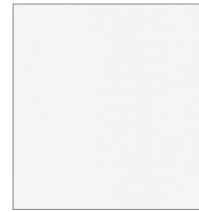
3D Wall Panels can also be ordered unfinished to be painted in the field. Please contract a licensed professional and follow all local building codes and requirements.



FROSTY WHITE



GLACIER WHITE



MATTE WHITE



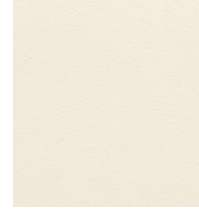
WHITE HG



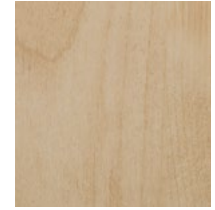
PORTUNA LIGHT



OAK ALABASTER



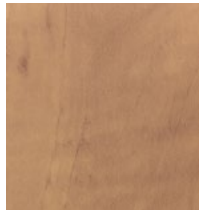
ANTIQUE WHITE



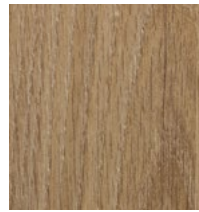
BLONDE MAPLE



CLEAR MAPLE



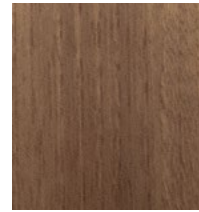
CANDLELIGHT



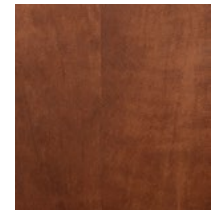
SALINAS OAK



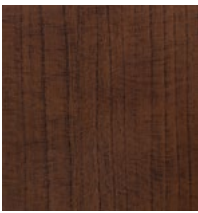
OAK PALOMINO



NATURAL WALNUT



SUMMERFLAME



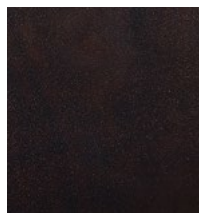
CHERRY BLOSSOM



AMATI WALNUT



OAK GIBRALTAR



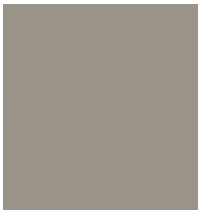
CHOCOLATE PEAR



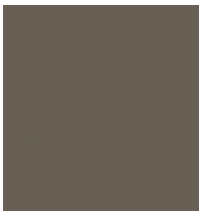
PORTUNA DARK



LAUSANNE



TURMALIN MATTE



UMBRA MATTE



GAUNTLET GREY



SIENA MATTE



SHARK GREY



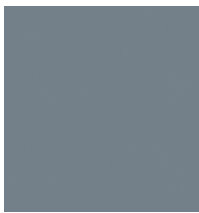
BLACK



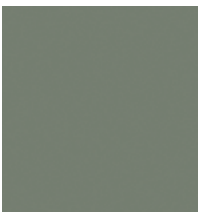
BRUSHED STEEL HG



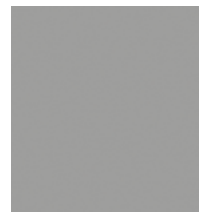
BRUSHED ALUMINUM



DENIM



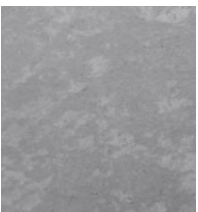
CELADON



CANADIAN GREY



FASHION GREY



SAHARA STONE



ROCK CONCRETE



RAW MDF

INSTALLATION

CABLE SUSPENSION HARDWARE

Divider Panels may be anchored to the ceiling and floor using cable suspension hardware. Single Panel Clips and Double Panel Clips connect the cable to Top Wire Mount and Bottom Turnbuckle for secure attachment. Please work directly with a licensed professional.

When specifying 3D laminate finished Divider panels, order double quantity panels with mirrored pattern to be installed back-to-back.

ADHESIVE | POINT SUPPORT | ZCLIP

Divider Panels can be installed as wall panels with various installation methods the most common being Industrial Adhesive, Standoff Hardware or Zclip Hardware. Consult with a licensed professional to determine the best installation method for your design intent.

Note: not all walls are plumb, square nor flat. Modifications may be necessary. It is your responsibility to determine the best installation method for your project based upon site conditions. It is the sole responsibility of the installer to meet all building codes.

