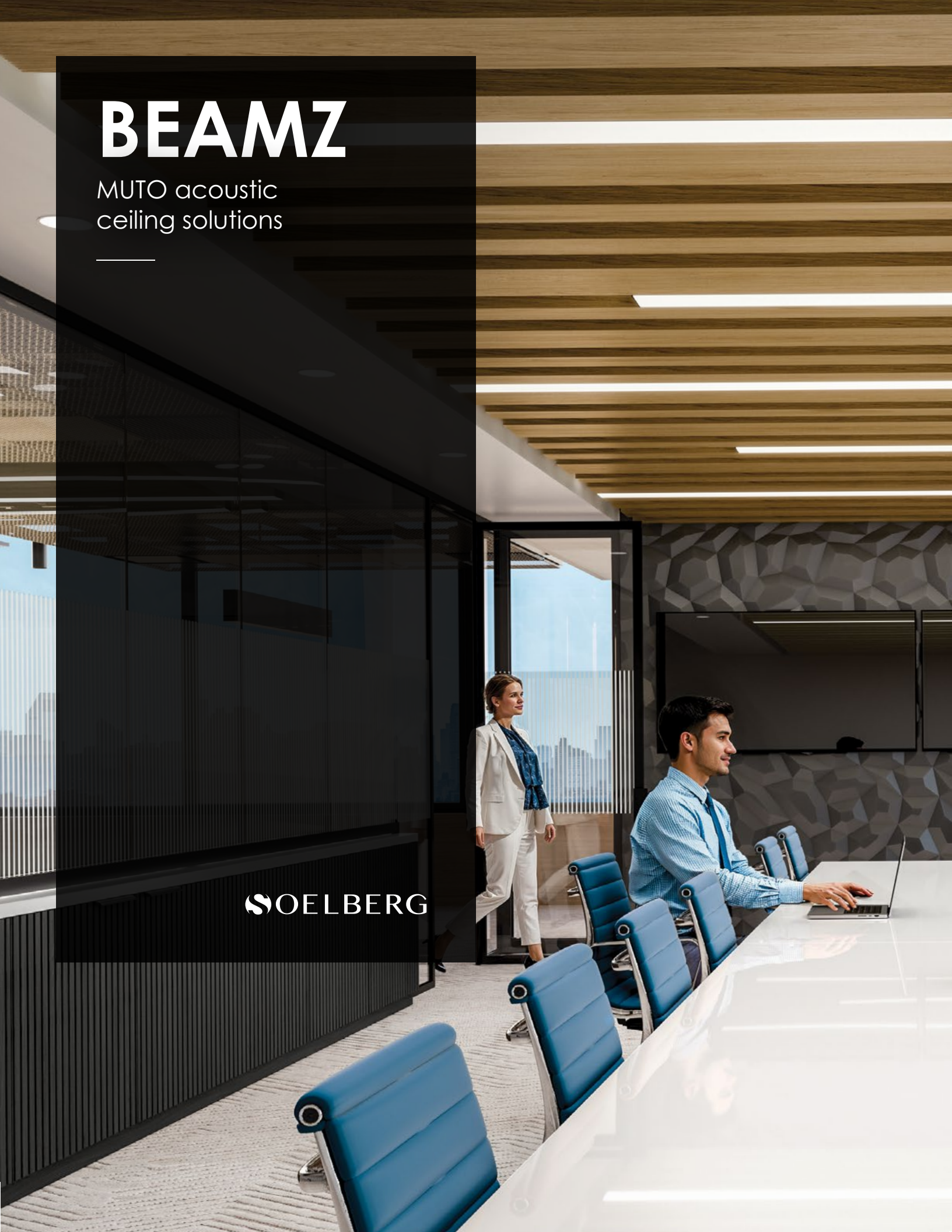


BEAMZ

MUTO acoustic
ceiling solutions

 SOELBERG



BEAMZ

MUTO acoustic ceiling solutions

Transform your space with *Larger Than Life* acoustic ceiling baffles; where bold design meets unbeatable performance. Available in a wide variety of vibrant colorways, custom prints, and sizes, these statement-making baffles don't just reduce noise, they redefine ceilings. Beamz baffles are engineered to deliver both aesthetic impact and acoustic comfort and they're made to order with an industry-leading two-week lead time, so you can bring your vision to life; really fast.

SPECIFICATION

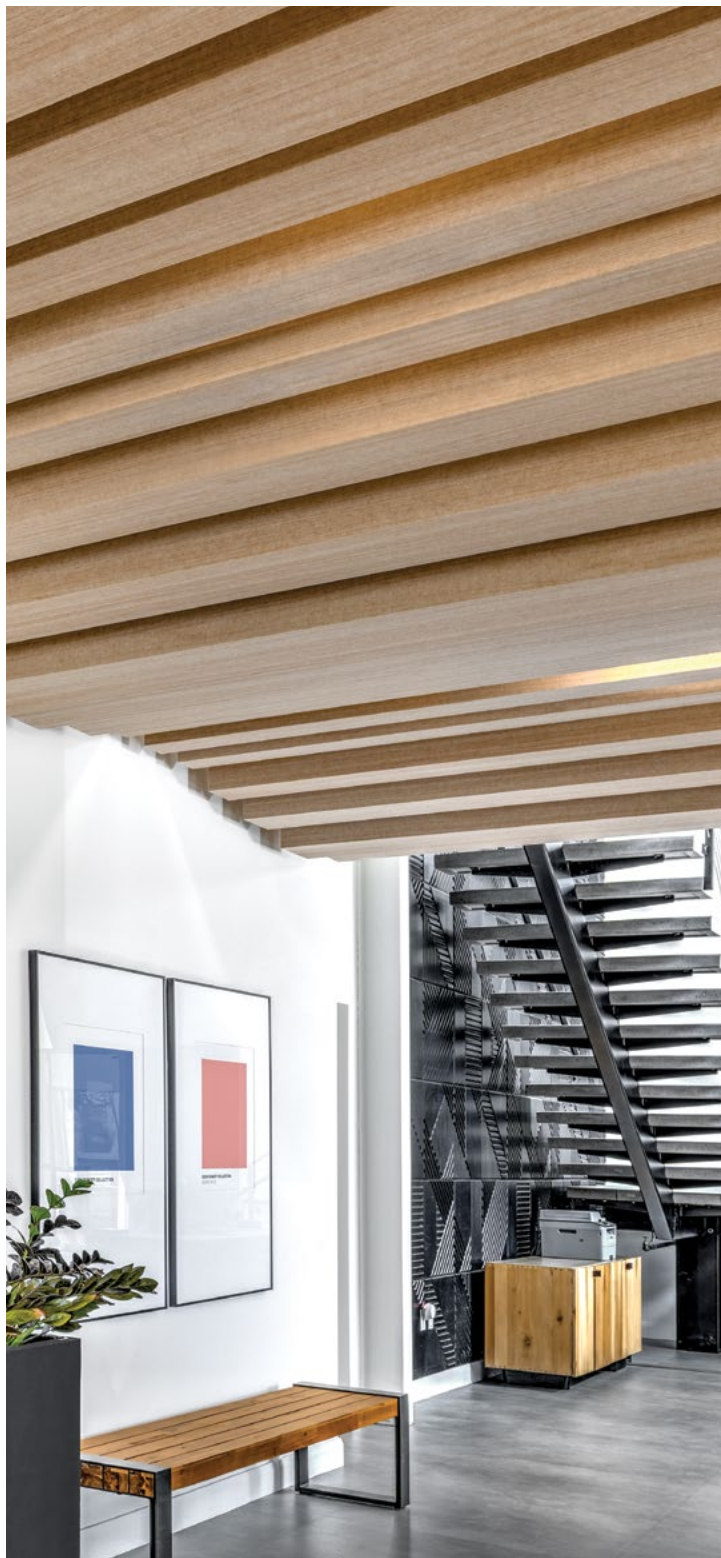
CONTENT	100% POLYESTER (PET) FELT	
CORE THICKNESS	1/2" (12MM)	
COLOR	39 SOLID COLORS 12 WOODED PRINT GRAINS 4 PRINTED COLORS OR CUSTOM PRINT	
SIZE	5" x 5" 11" x 11" 6" x 10"	4" x 18" 6" x 4" 14" x 4"
WEIGHT	VARIES BY SIZE	
HARDWARE	1/4 - 20 CONNECT OR STRUTCLIP	
ACOUSTICS	TESTING IN PROGRESS	
FIRE RATING	CLASS A ASTM - E84	
ENVIRONMENTAL	DELCARE, MINDFUL MATERIALS & GREENGUARD GOLD CERTIFIED. MUTO IS PRODUCED FROM 100% RECYCLABLE PET FELT WITH A MINIMUM OF 60% PRE-CONSUMER RECYCLED CONTENT.	
COLORFASTNESS	IN ACCORDANCE WITH ATCC 16.3 OPTION 3 THE COLOR CHANGE TO LIGHT AT 20 AFU WAS 4.5.	
FINISH	MATTE	
APPLICATION	INDOOR USE ONLY	
LEAD TIME	2 - 3 WEEKS (STANDARD PRODUCT)	
WARRANTY	2 YEARS	

TOLERANCES & MAINTENANCE

PET core is a soft fibrous material. All dimensions and squareness are subject to +/- 1/16" tolerance.

Vacuum to remove dirt and dust. Remove spills or spots immediately using a clean damp cloth. Carpet and fabric cleaners can also be used to clean. (Always test an inconspicuous area first.) Compressed air may be used to dust in difficult or hard-to-reach areas.

To disinfect, bleach can be used in accordance with CDC Cleaning & Disinfection instructions. The solution ratio is 5 tablespoons of bleach to 1 gallon of water | 4 teaspoons of bleach to 1 quart of water. Apply solution by spray and wipe off immediately. (Always test in an inconspicuous area first.)



HOW TO SPECIFY

It is easy to specify Beamz with four simple steps.

1

CHOOSE YOUR COLOR

Select from 39 beautiful solid colors, 12 rich printed wood grains, 4 standard printed colors or unlimited custom print.

2

SELECT BAFFLE SIZE OR SIZES

With square or vertical and horizontal oriented rectangular baffles or a combination of all, get creative in baffle arrays.

3

PROVIDE RCP OR BAFFLE LENGTHS

Baffle lengths range from 24" to 108". Provide your RCP and we'll lay out your baffles or indicate your desired baffle length and quantity.

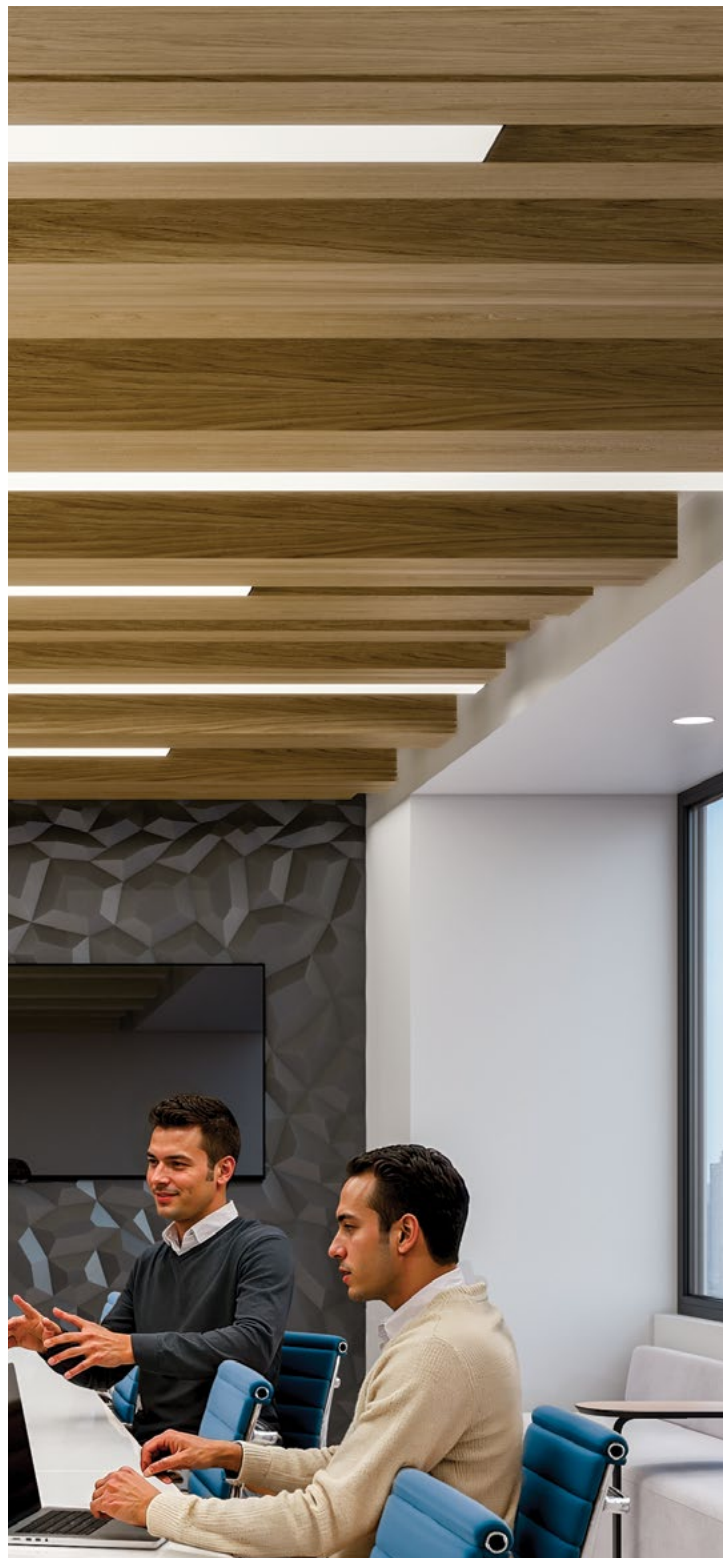
Seamless baffles available. Discuss options with our customer service representative.

4

CHOOSE HARDWARE

With 1/4 - 20 Connect or StrutClip hardware options, we make your installation simple and easy.

For seamless and angled baffle installation, 1/4 - 20 Connect and Aircraft cable hardware required.



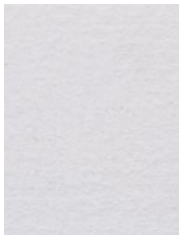
COLOR (STOCK)

MATTE COLOR

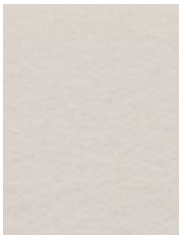
27 STANDARD COLORS
CUSTOM PRINT COLORS AVAILABLE
(CONTACT YOUR LOCAL SALES REP)
100% RECYCLABLE PET FELT

TOLERANCES

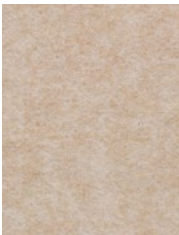
PET felt is made from 100% recyclable polyester plastic. Variation in depth will occur. Slight and consistent variations in color, density, texture are inherent to this core material and should be expected. Color, density and texture will vary by dye lot. MUTO is made with a 'felting' process which results in a textural heathered effect where the fibers consist of multiple tones and shades.



WHITE



BONE



OATMEAL



CAMEL



SAND



CASHMERE



FOG



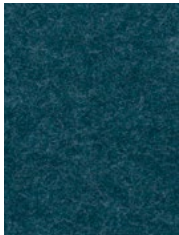
LAMB'S EAR



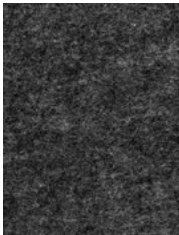
PEWTER



NORDIC KNIT



WINTER WATER



GRAPHITE



BLACK



MIDNIGHT



BLUEBERRY



JUNIPER



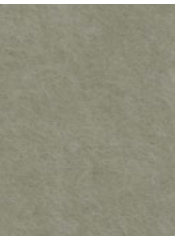
SPLASH



STORM



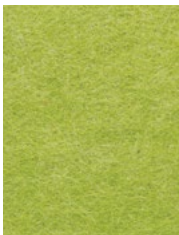
SEAFOAM



SAGE



ARTICHOKE



LICHEN



SUNSHINE



QUAKING ASPEN



CLEMENTINE



CHILI PEPPER



CURRANT

COLOR (NON STOCK)

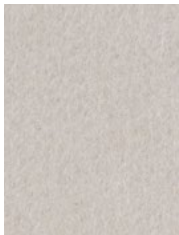
EXTENDED LEAD TIME

MATTE COLOR

12 STANDARD NON-STOCKED COLORS
CUSTOM PRINT COLORS AVAILABLE
(CONTACT YOUR LOCAL SALES REP)
100% RECYCLABLE PET FELT

TOLERANCES

PET felt is made from 100% recyclable polyester plastic. Variation in depth will occur. Slight and consistent variations in color, density, texture are inherent to this core material and should be expected. Color, density and texture will vary by dye lot. MUTO is made with a 'felling' process which results in a textural heathered effect where the fibers consist of multiple tones and shades.



LATTE



CITY GRAY



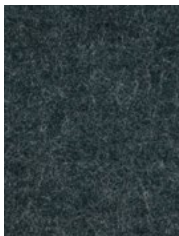
BONDI BLUE



MARINE



WASHED DENIM



DEEP JUNGLE



COLLARD GREEN



ASPARAGUS



PECAN



SIENA



RASPBERRY



PINK LEMONADE

WOODED PRINT COLOR

MATTE FINISH

12 PRINTED WOODED GRAINS

1/2" CORE THICKNESS

100% RECYCLABLE PET FELT



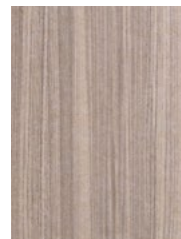
WHITE WASHED OAK



BLONDE MAPLE



NATURAL ASH



AGED ASH



SMOKED ASH

TOLERANCES

PET felt is made from 100% recyclable polyester plastic. Slight and consistent variations in color, density, texture are inherent to this core material and should be expected. Color, density and texture will vary by dye lot. MUTO is made with a 'felting' process which results in a textural heathered effect where the fibers consist of multiple tones and shades.

Please request physical samples as colors are represented differently with different computer monitors.



AMBER ASH



WARM WALNUT



NATURAL WALNUT



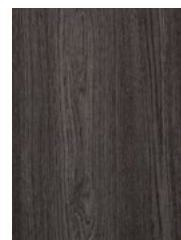
BLACK WALNUT



WEATHERED PINE



CARBON WALNUT



CHARRED OAK

PRINT COLOR

MATTE FINISH

4 PRINTED STANDARD COLORS

1/2" CORE THICKNESS

100% RECYCLABLE PET FELT

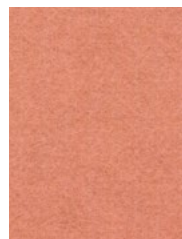
CUSTOM PRINT COLORS AVAILABLE

(CONTACT YOUR LOCAL SALES REP)

TOLERANCES

PET felt is made from 100% recyclable polyester plastic. Slight and consistent variations in color, density, texture are inherent to this core material and should be expected. Color, density and texture will vary by dye lot. MUTO is made with a 'felting' process which results in a textural heathered effect where the fibers consist of multiple tones and shades.

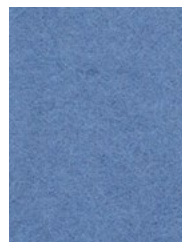
Please request physical samples as colors are represented differently with different computer monitors.



DESERT ROSE



DARK CLAY



RIVER



SAP GREEN

SIZE

BEAMZ BAFFLE STANDARD

BAFFLE THICKNESS: SEE SIZE OPTIONS

BAFFLE HEIGHT: SEE SIZE OPTIONS

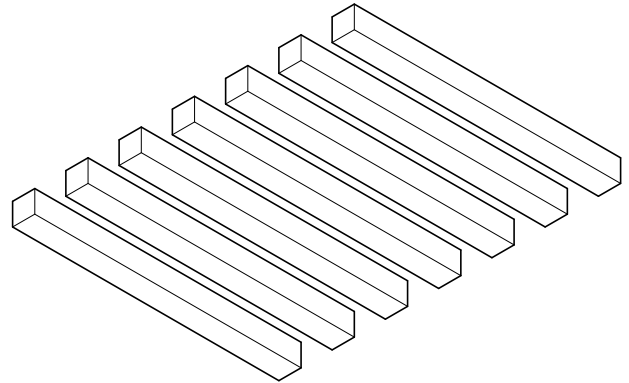
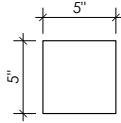
BAFFLE LENGTH: 24" - 108" (NOMINAL)

BAFFLE SPACING END-TO-END: 1"

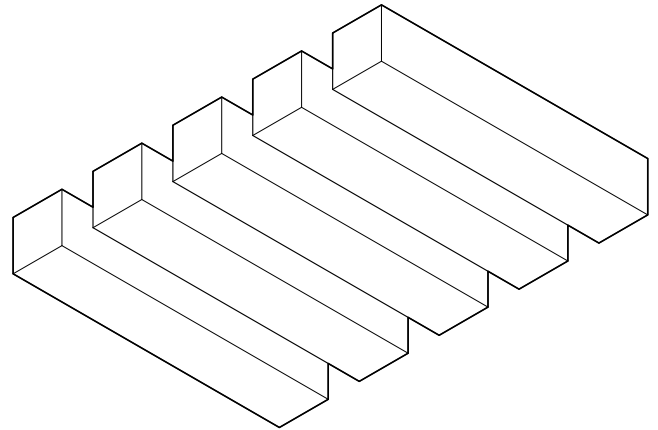
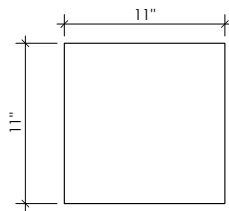
BAFFLE SPACING FROM WALL: 4"

(WANT TO CUSTOMIZE? CONTACT YOUR
SALES REPRESENTATIVE FOR MORE DETAILS.
THE COMBINATION OF THE DEPTH AND
THICKNESS MUST BE EQUAL TO OR LESS
THAN 45")

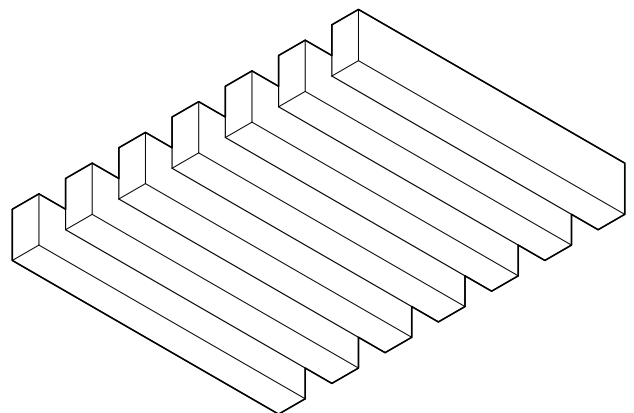
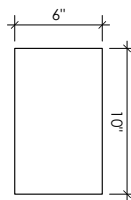
SPECIFY A SINGLE SIZE OR COMBINE SIZES FOR
EVEN GREATER VARIATION.



BEAMZ 5"W x 5"H
12" OC SPACING SHOWN



BEAMZ 11"W x 11"H
18" OC SPACING SHOWN



BEAMZ 6"W x 10"H
12" OC SPACING SHOWN

SIZE CONTINUED

BEAMZ BAFFLE STANDARD

BAFFLE THICKNESS: SEE SIZE OPTIONS

BAFFLE HEIGHT: SEE SIZE OPTIONS

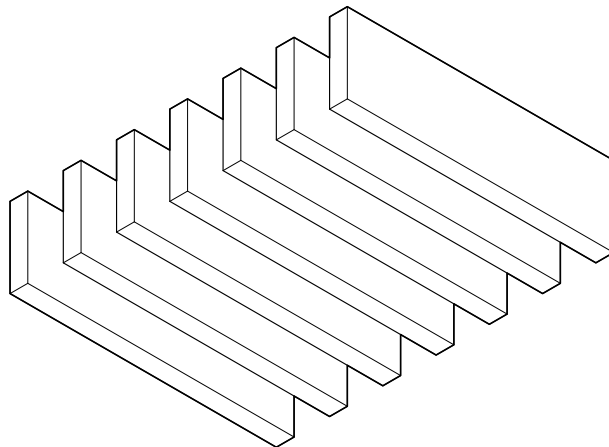
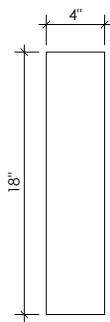
BAFFLE LENGTH: 24" - 108" (NOMINAL)

BAFFLE SPACING END-TO-END: 1"

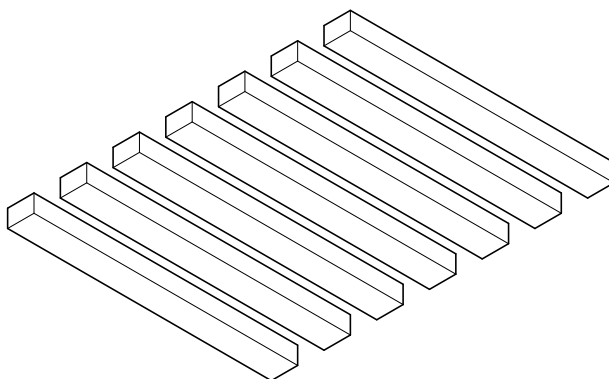
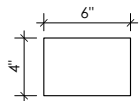
BAFFLE SPACING FROM WALL: 4"

(WANT TO CUSTOMIZE? CONTACT YOUR
SALES REPRESENTATIVE FOR MORE DETAILS.
THE COMBINATION OF THE DEPTH AND
THICKNESS MUST BE EQUAL TO OR LESS
THAN 45")

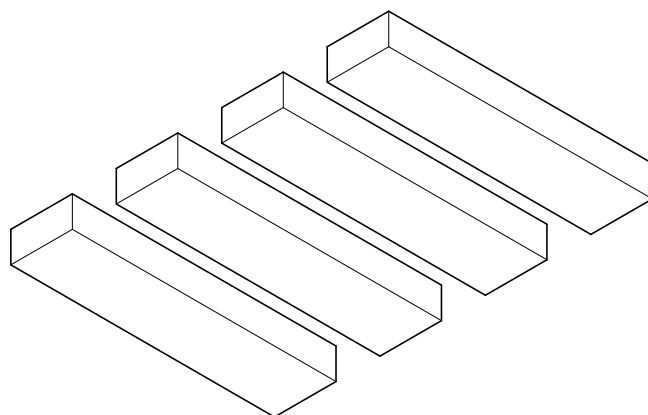
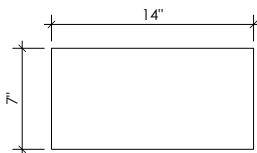
SPECIFY A SINGLE SIZE OR COMBINE SIZES FOR
EVEN GREATER VARIATION.



BEAMZ 4"W x 18"H
12" OC SPACING SHOWN



BEAMZ 6"W x 4"H
12" OC SPACING SHOWN



BEAMZ 14"W x 7"H
24" OC SPACING SHOWN

HARDWARE

1/4" - 20 CONNECT ATTACHMENT

1/4" - 20 THREADED CONNECT

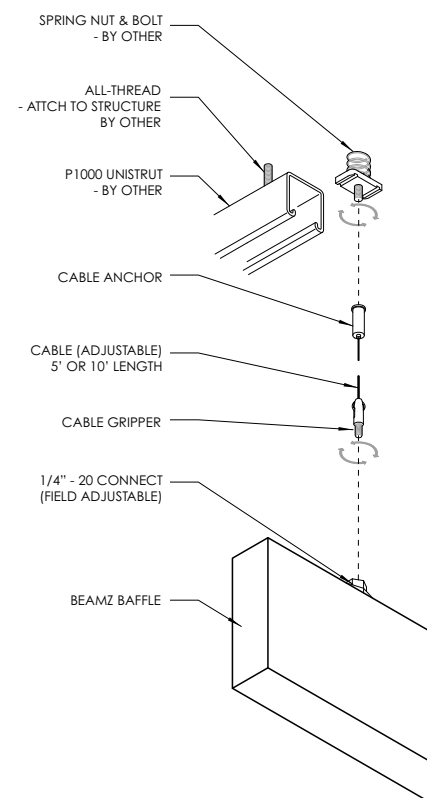
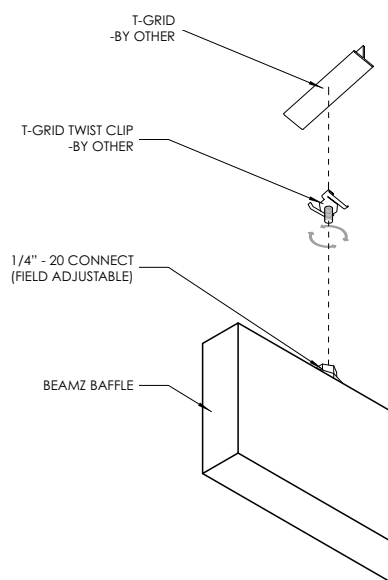
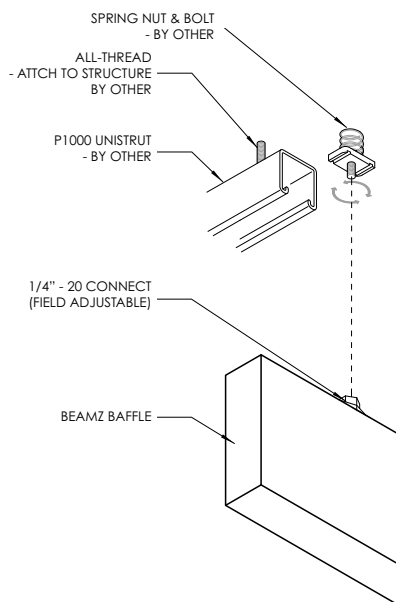
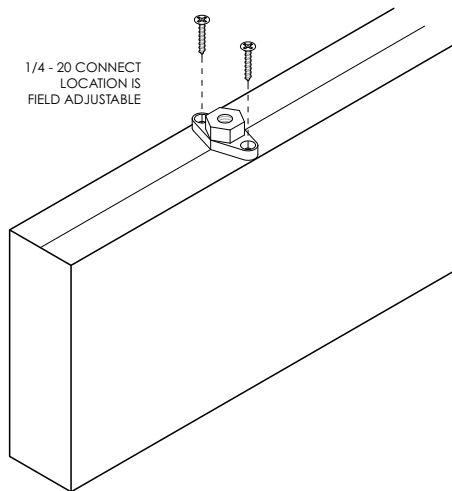
2 COUPLERS PER BAFFLE

FACTORY INSTALLED

CONNECT CAN DETACH AND BE RELOCATED IN FIELD

CONNECT CAN ATTACH TO ANY 1/4" - 20 SYSTEM

***FOR SEAMLESS BAFFLE INSTALLATION, 1/4" - 20 CONNECT HARDWARE + AIRCRAFT CABLE IS REQUIRED.



1/4" - 20 CONNECT INSTALLATION OPTIONS

HARDWARE CONTINUED

STRUTCLIP CONNECTION

FOR UNISTRUT INSTALLATION ONLY

UNISTRUT PROVIDED BY OTHERS

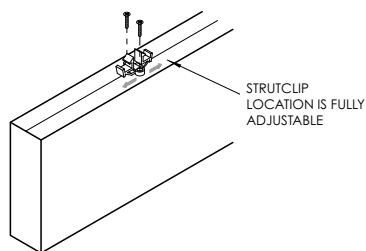
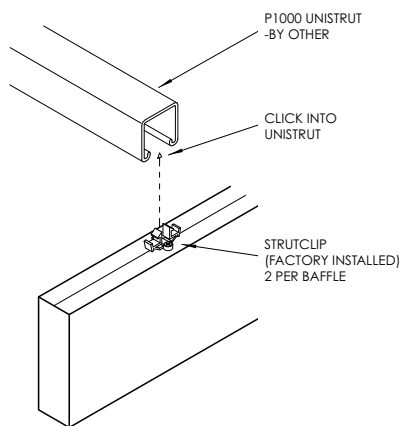
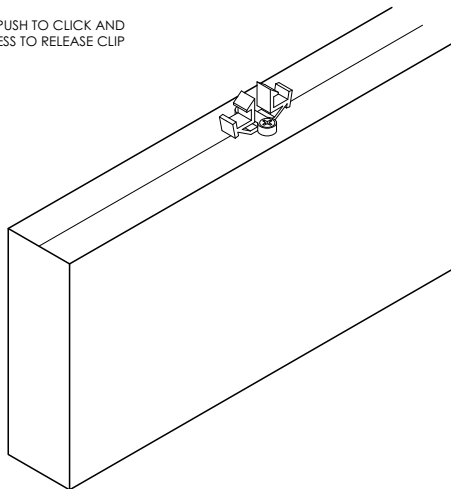
2 STRUTCLIP HARDWARE PER BAFFLE

FACTORY INSTALLED

STRUTSNAP CAN DETACH AND BE RELOCATED IN FIELD

***FOR SEAMLESS BAFFLE INSTALLATION, 1/4 - 20 CONNECT HARDWARE + AIRCRAFT CABLE IS REQUIRED. NOT POSSIBLE WITH STRUTCLIP.

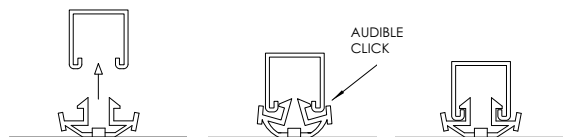
PUSH TO CLICK AND
PRESS TO RELEASE CLIP



INSTALLATION

ENGAGE STRUTCLIP

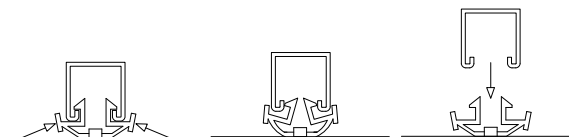
P1000 UNISTRUT BY OTHER



INSERT STRUTCLIP INTO UNISTRUT. YOU WILL HEAR AN AUDIBLE CLICK.

DISENGAGE STRUTCLIP

P1000 UNISTRUT BY OTHER



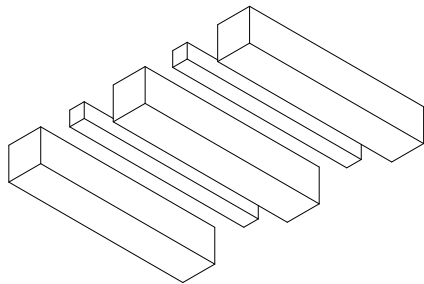
TO REMOVE, SQUEEZE TABS ON BOTH SIDES AND BAFFLE WILL DROP FROM UNISTRUT.

FOR BAFFLES LONGER THAN 48", TWO INDIVIDUALS ARE REQUIRED FOR BAFFLE REMOVAL.

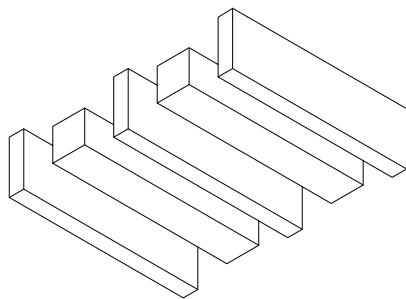
GET CREATIVE

OPTIONS TO TAKE BEAMZ TO THE NEXT LEVEL

SELECT VARYING SIZES FOR UNIQUE BAFFLE ARRAYS

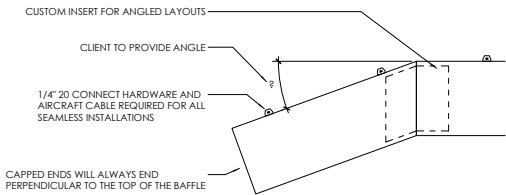


BEAMZ 5X5, 11X11

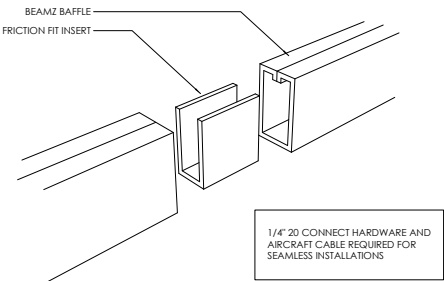


BEAMZ 11X11, 4X18

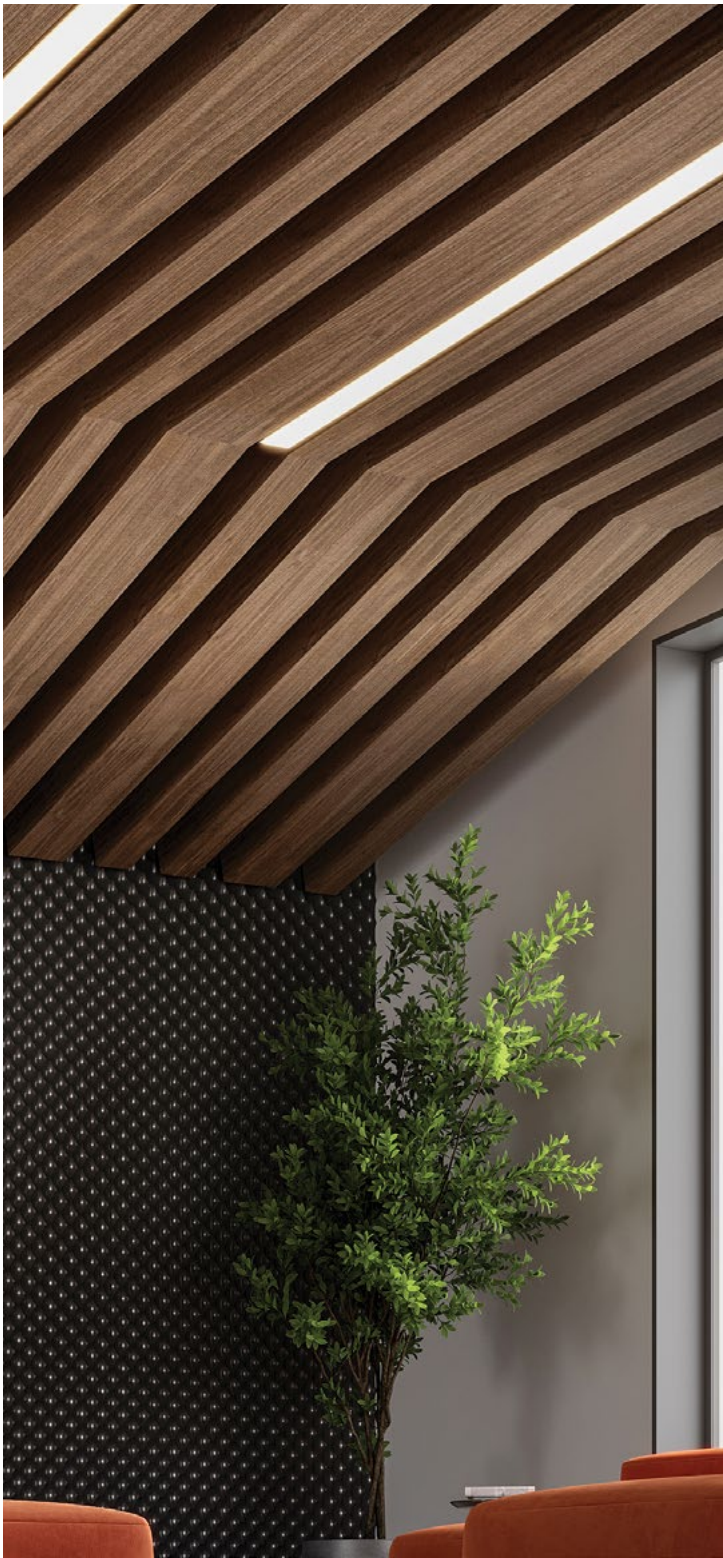
ANGLED AND SEAMLESS BAFFLES ARE AVAILALBE UPON REQUEST



SEAMLESS BAFFLE ANGLED DETAIL



SEAMLESS BAFFLE DETAIL



ACOUSTICS

NRC values in the United States use the ASTM C423 for an industry wide standard for testing acoustic baffles.

The previous test: ASTM C423-17: "Standard Test Method for Sound Absorption and Sound Absorption Coefficients by the Reverberation Room Method." has been replaced in 2023 with ASTM C423-23.

This latest version removes ambiguity regarding the surface area used to calculate the NRC values.

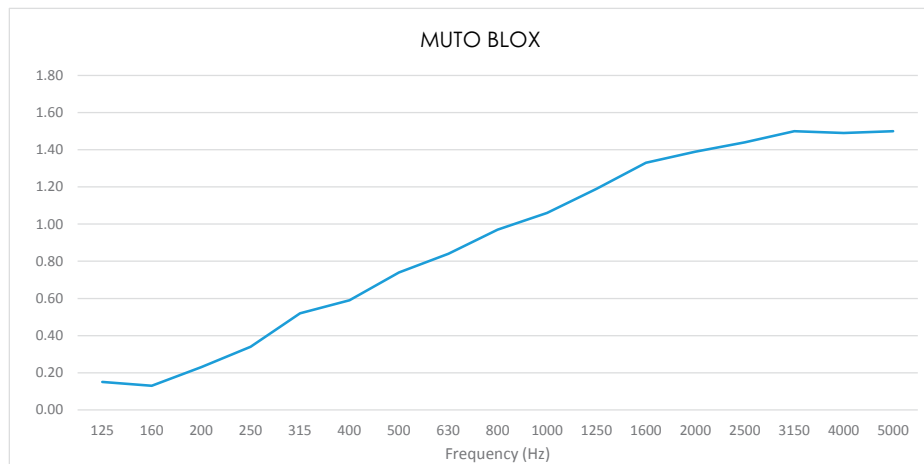
Previous Soelberg NRC values for hanging baffles have used ASTM C423-17 with the total sound absorption divided by the total surface area of the test surface covered by the hanging baffles, including intermediate spaces. This is more conservative than other calculation methods, but is most representative of the intended use of our baffles.

As of July 2023, Soelberg has adapted all of our NRC tests to the latest method: ASTM C423-23.

The new standard is more precise, avoiding the ambiguity inherent in C423-17. The new C423-23 also includes an additional 12" of space in the baffle array for all tests. This was not included in the previous test standard, and may cause the final NRC value to decrease slightly.

Soelberg strives to have the most precise acoustic data possible, and is the first manufacturer to adopt the new standard to our knowledge.

Please confirm that the ASTM C423-23 method was used when comparing competing products.



PRODUCT	MOUNTING		SAMPLE FREQUENCY (Hz)				NRC	SAA
			250	500	1000	2000		
BLOX	J ₁	α	0.34	0.74	1.06	1.39	0.90	0.89

***NRC values are from Blox 6" baffles spaced at 6" on center. Beamz baffles will have higher or lower NRC values based on baffle size and spacing.

APPARENT NRC RATINGS

NRC values are typically used for flat surfaces of a given surface area, e.g. carpet or wall coverings. When rating hanging objects that are spread out, the 'Apparent NRC' is used.

WHAT IS NRC?

NRC is an acronym for Noise Reduction Coefficient. This is a convenient single rating for assessing the absorbency of a material. This can be used to predict its efficacy for reducing reverberation within a room. NRC the absorption coefficients at 125 Hz, 250 Hz, 500 Hz and 1,000 Hz, rounded to the nearest 0.05.

WHY NOT STC?

STC (Sound Transmission Class) is a value used to describe the amount of sound that passes through a barrier. This can be given to a material or an entire wall assembly. If you need to assess how well a barrier can block sound between rooms you'll need to know the STC rating. Acoustic baffles are not used to physically divide rooms, but rather to absorb noise within a room. Problematic noise in a room is called reverberation. This can manifest as droning or ringing sound when people are speaking, or in the worst case: an echo. For this reason, NRC or SAA are the appropriate rating systems for treating reverberation issues.

ENVIRONMENTAL

DECLARE, MINDFUL MATERIALS & GREENGUARD GOLD CERTIFIED

We care about the environment and it matters that our materials support healthy and productive interior spaces. We use innovative materials but ensure that they meet the highest level of standards and expectations.

MUTO PET felt core material is 100% recyclable with no added urea formaldehyde.

Declare.

