




CHIUSO

MUTO acoustic
ceiling tile solutions

 SOELBERG

CHIUSO

MUTO acoustic ceiling tile solutions

Boring ceiling grid? Make it memorable with beautiful MUTO acoustic ceiling tile solutions. Folded absorption that fits both 9/16" and 15/16" standard ceiling grid makes Chiuso your next specification.

Choose from 2x2 or 2x4 tiles with a top cap, dividers or without in a variety of color and print options to make ceilings that are as unique as you are. Make It Cool. Make It Quiet.

SPECIFICATION

CONTENT	100% POLYESTER (PET) FELT
CORE THICKNESS	1/2" (12MM)
TILE SIZE	24" x 24" 24" x 48"
TILE DEPTH & WIDTH	3.75" x 1"
COLORWAYS	39 STANDARD SOLID COLORS 12 WOODED PRINTS 4 PRINTED COLORS CUSTOM
WEIGHT	VARIES BY TILE
ACOUSTICS	TESTING IN PROGRESS
FIRE RATING	CLASS A ASTM - E84
ENVIRONMENTAL	DELCARE, MINDFUL MATERIALS & GREENGUARD GOLD CERTIFIED. MUTO IS PRODUCED FROM 100% RECYCLABLE PET FELT WITH A MINIMUM OF 60% PRE-CONSUMER RECYCLED CONTENT.
COLORFASTNESS	IN ACCORDANCE WITH ATCC 16.3 OPTION 3 THE COLOR CHANGE TO LIGHT AT 20 AFU WAS 4.5.
FINISH	MATTE
APPLICATION	INDOOR USE ONLY
LEAD TIME	2 WEEK (STOCK & PRINT)
WARRANTY	2 YEARS

TOLERANCE & MAINTENANCE

PET core is a soft fibrous material. All dimensions and squareness are subject to +/- 1/16" tolerance.

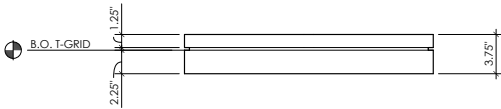
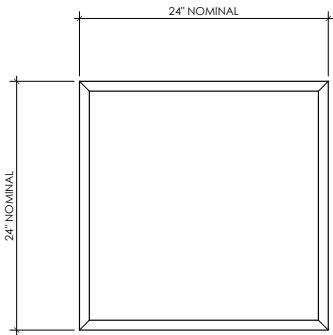
Vacuum to remove dirt and dust. Remove spills or spots immediately using a clean damp cloth. Carpet and fabric cleaners can also be used to clean. (Always test an inconspicuous area first.) Compressed air may be used to dust in difficult or hard-to-reach areas. To disinfect, bleach can be used in accordance with CDC Cleaning & Disinfection instructions. The solution ratio is 5 tablespoons of bleach to 1 gallon of water | 4 teaspoons of bleach to 1 quart of water. Apply solution by spray and wipe off immediately. (Always test in an inconspicuous area first.)



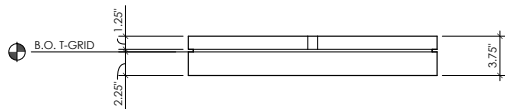
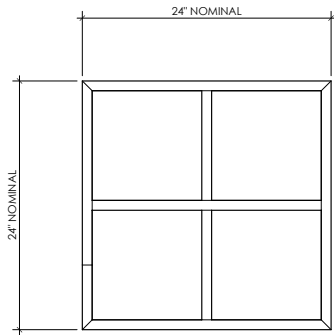
CHIUso (2x2)

TILE SIZE & OPTIONS

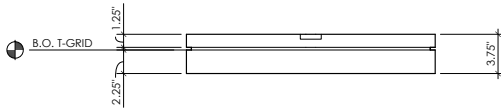
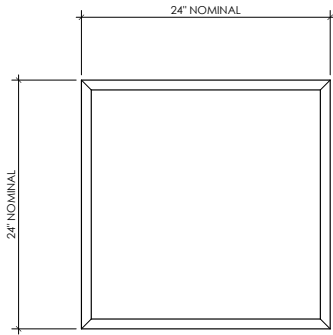
- OPEN TILES
- CLOSED TILES WITH TOP CAP
- OR TILES WITH DIVIDERS



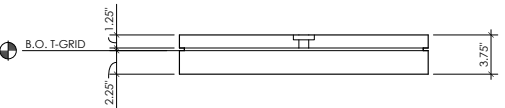
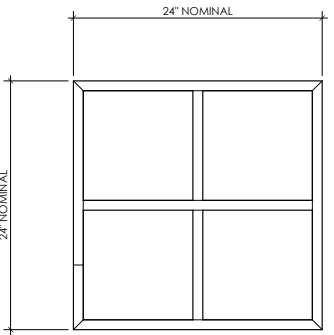
CHIUSO (2x2) OPEN
WEIGHT: 2.5 LBS



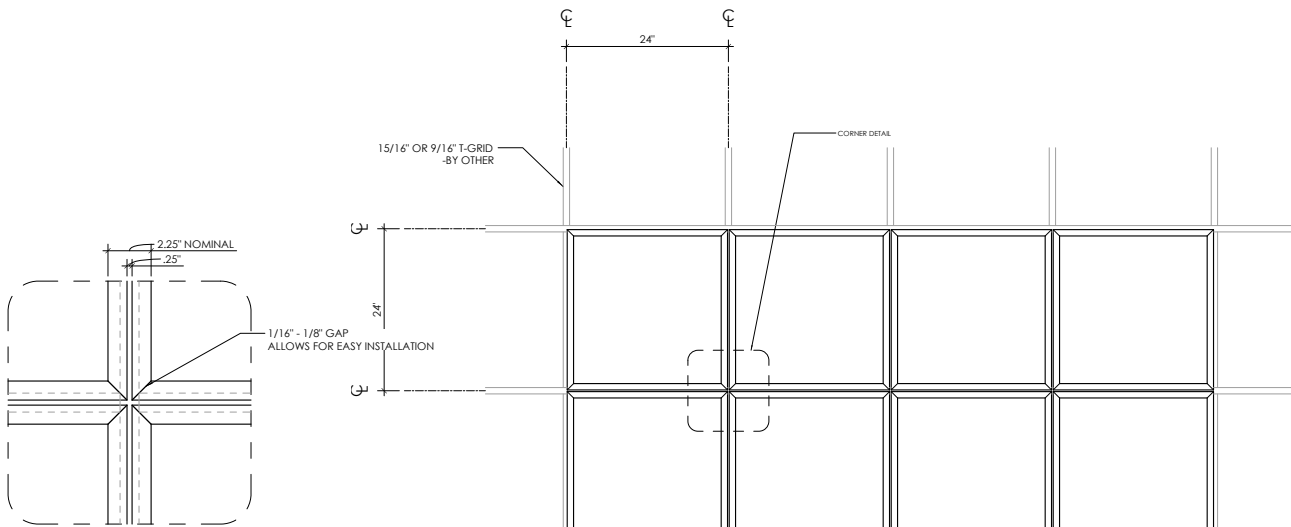
CHIUSO (2x2) OPEN WITH DIVIDERS
WEIGHT: 3.10 LBS



CHIUSO (2x2) CLOSED
WEIGHT: 4.2 LBS



CHIUSO (2x2) CLOSED WITH DIVIDERS
WEIGHT: 5.2 LBS



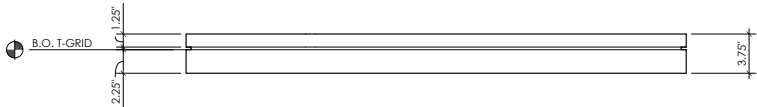
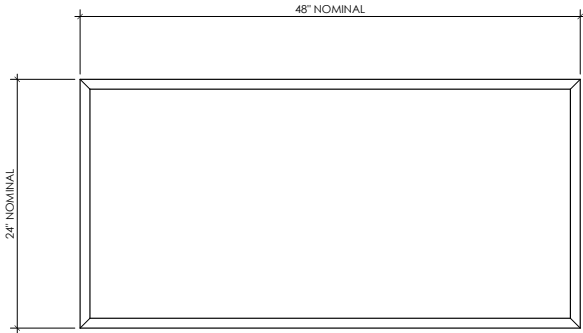
INSTALLED CORNER DETAIL

CHIUSO (2x2) CLOSED WITH DIVIDERS LAYOUT

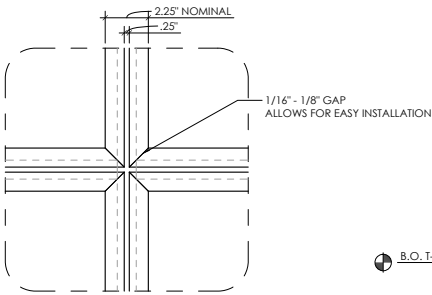
CHIUSO (2x4)

TILE SIZES & OPTIONS

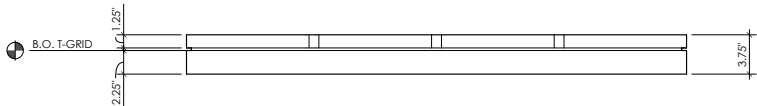
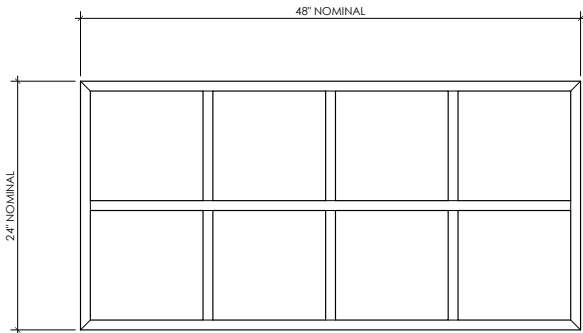
- OPEN TILES
- CLOSED TILES WITH TOP CAP
- OR TILES WITH DIVIDERS



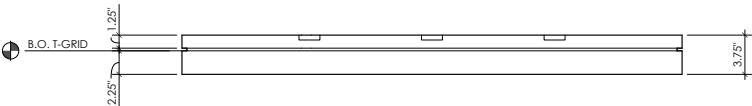
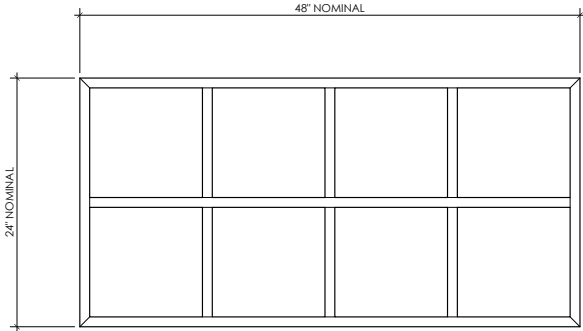
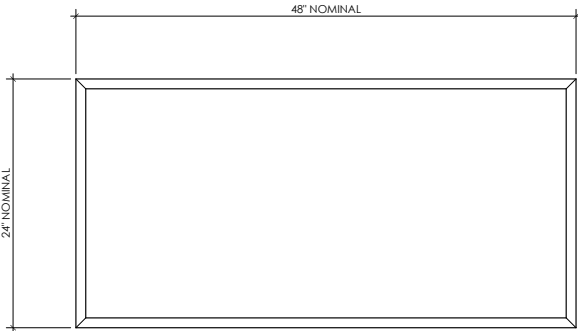
CHIUSO (2x4) OPEN
WEIGHT: 4 LBS



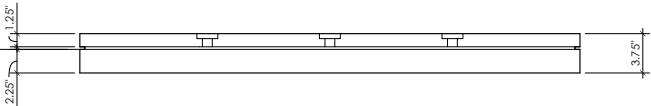
INSTALLED CORNER DETAIL



CHIUSO (2x4) OPEN WITH DIVIDERS
WEIGHT: 7.2 LBS



CHIUSO (2x4) CLOSED
WEIGHT: 8 LBS



CHIUSO (2x4) CLOSED WITH DIVIDERS
WEIGHT: 10 LBS

COLOR (STOCK)

MATTE COLOR

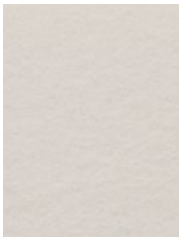
27 STANDARD COLORS
CUSTOM PRINT COLORS AVAILABLE
(CONTACT YOUR LOCAL SALES REP)
100% RECYCLABLE PET FELT

TOLERANCES

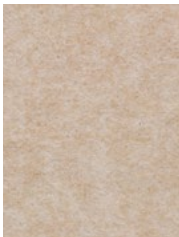
PET felt is made from 100% recyclable polyester plastic. Variation in depth will occur. Slight and consistent variations in color, density, texture are inherent to this core material and should be expected. Color, density and texture will vary by dye lot. MUTO is made with a 'felting' process which results in a textural heathered effect where the fibers consist of multiple tones and shades.



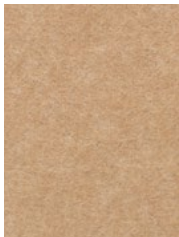
WHITE



BONE



OATMEAL



CAMEL



SAND



CASHMERE



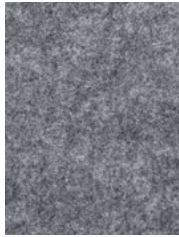
FOG



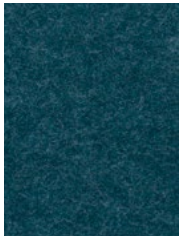
LAMB'S EAR



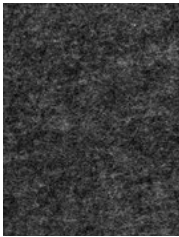
PEWTER



NORDIC KNIT



WINTER WATER



GRAPHITE



BLACK



MIDNIGHT



BLUEBERRY



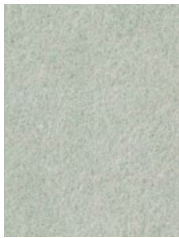
JUNIPER



SPLASH



STORM



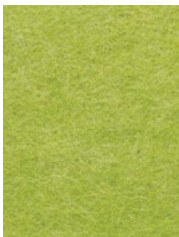
SEAFOAM



SAGE



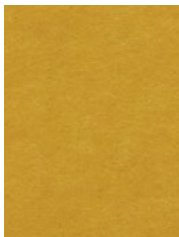
ARTICHOKE



LICHEN



SUNSHINE



QUAKING ASPEN



CLEMENTINE



CHILI PEPPER



CURRANT

COLOR (NON STOCK)

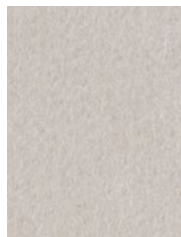
EXTENDED LEAD TIME

MATTE COLOR

12 STANDARD NON-STOCKED COLORS
CUSTOM PRINT COLORS AVAILABLE
(CONTACT YOUR LOCAL SALES REP)
100% RECYCLABLE PET FELT

TOLERANCES

PET felt is made from 100% recyclable polyester plastic. Variation in depth will occur. Slight and consistent variations in color, density, texture are inherent to this core material and should be expected. Color, density and texture will vary by dye lot. MUTO is made with a 'felling' process which results in a textural heathered effect where the fibers consist of multiple tones and shades.



LATTE



CITY GRAY



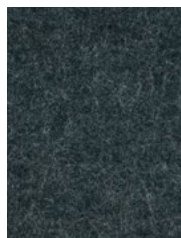
BONDI BLUE



MARINE



WASHED DENIM



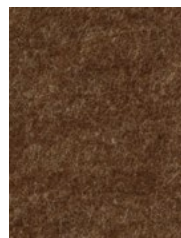
DEEP JUNGLE



COLLARD GREEN



ASPARAGUS



PECAN



SIENA



RASPBERRY



PINK LEMONADE

WOODED COLOR

MATTE FINISH

12 PRINTED WOODED GRAINS

1/2" CORE THICKNESS

100% RECYCLABLE PET FELT

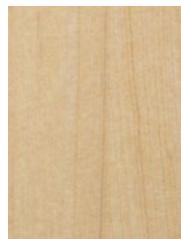
TOLERANCES

PET felt is made from 100% recyclable polyester plastic. Slight and consistent variations in color, density, texture are inherent to this core material and should be expected. Color, density and texture will vary by dye lot. MUTO is made with a 'felling' process which results in a textural heathered effect where the fibers consist of multiple tones and shades.

Please request physical samples as colors are represented differently with different computer monitors.



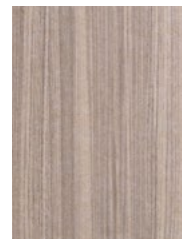
WHITE WASHED OAK



BLONDE MAPLE



NATURAL ASH



AGED ASH



SMOKED ASH



AMBER ASH



WARM WALNUT



NATURAL WALNUT



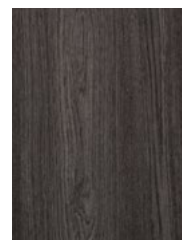
BLACK WALNUT



WEATHERED PINE



CARBON WALNUT



CHARRED OAK

PRINT COLOR

MATTE FINISH

4 PRINTED STANDARD COLORS

1/2" CORE THICKNESS

100% RECYCLABLE PET FELT

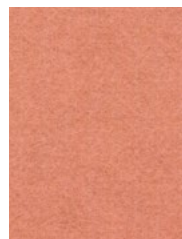
CUSTOM PRINT COLORS AVAILABLE

(CONTACT YOUR LOCAL SALES REP)

TOLERANCES

PET felt is made from 100% recyclable polyester plastic. Slight and consistent variations in color, density, texture are inherent to this core material and should be expected. Color, density and texture will vary by dye lot. MUTO is made with a 'felling' process which results in a textural heathered effect where the fibers consist of multiple tones and shades.

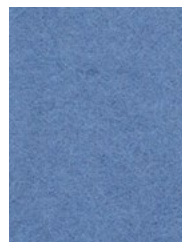
Please request physical samples as colors are represented differently with different computer monitors.



DESERT ROSE



DARK CLAY



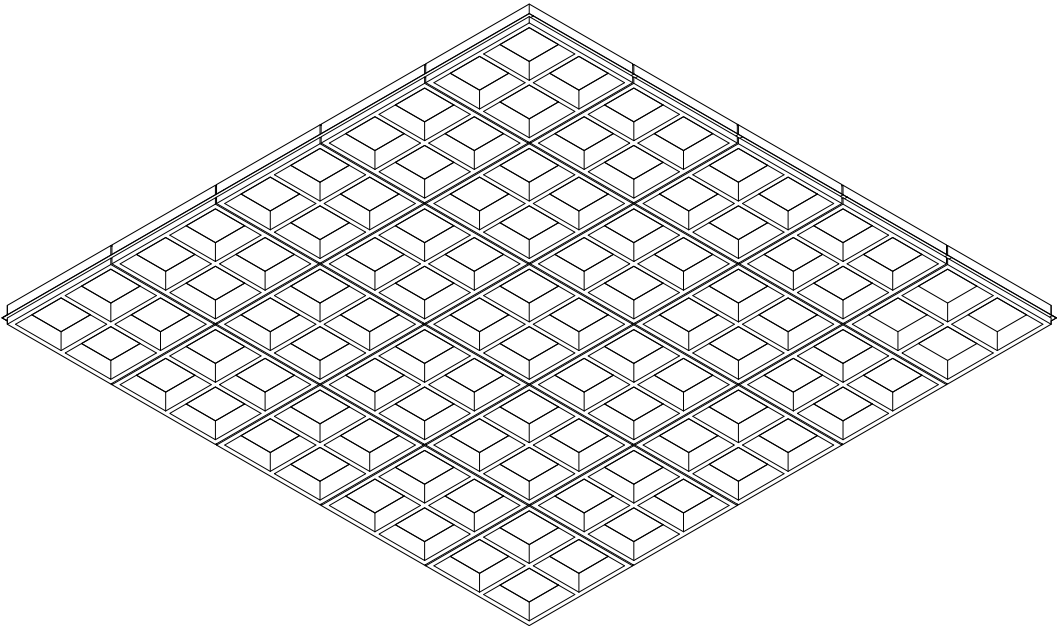
RIVER



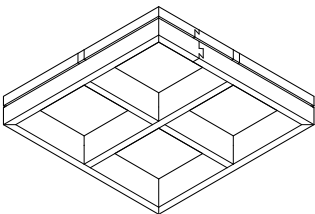
SAP GREEN

AESSEMBLY & INSTALLATION

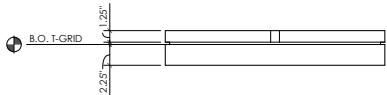
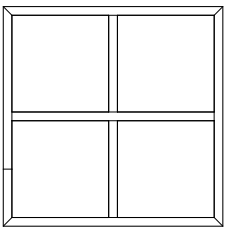
TILE LAYOUT



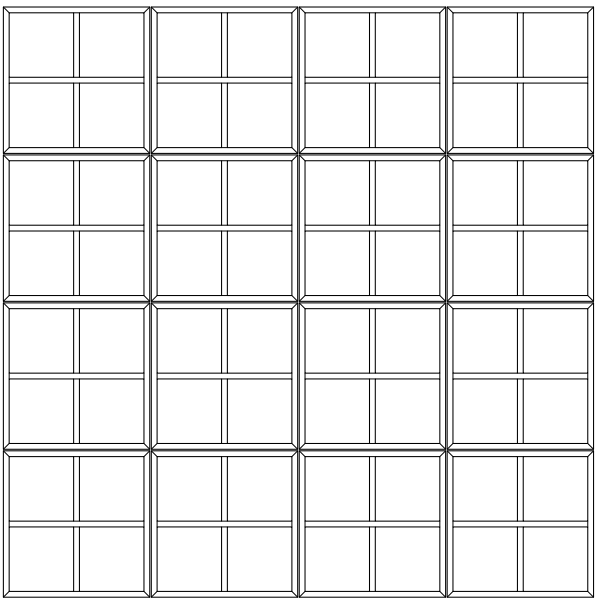
CHIUSO (2x2) OPEN WITH DIVIDERS PERSPECTIVE LAYOUT



CHIUSO (2x2) OPEN WITH DIVIDERS PERSPECTIVE



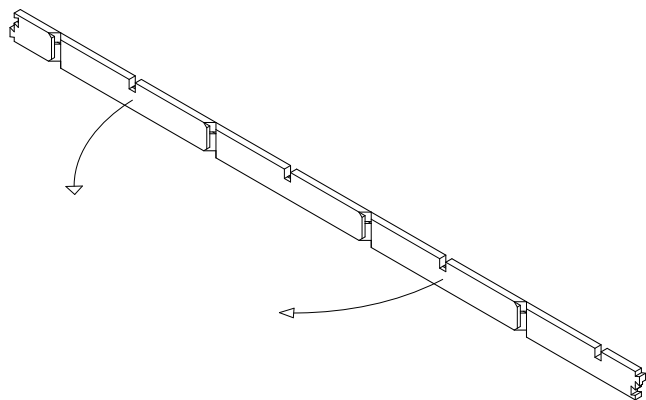
CHIUSO (2x2) OPEN WITH DIVIDERS DEPTH DIMENSIONS



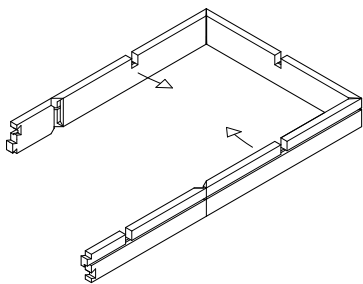
CHIUSO (2x2) OPEN WITH DIVIDERS LAYOUT

AESSEMBLY & INSTALLATION CONTINUED

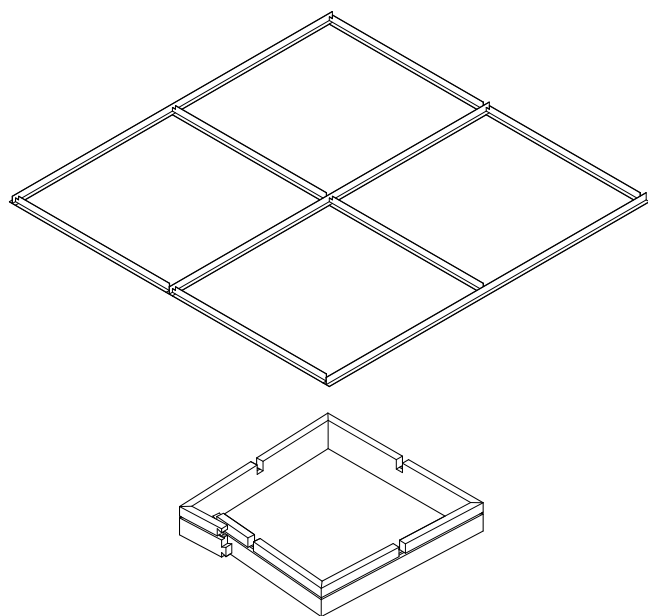
TILE FOLDING



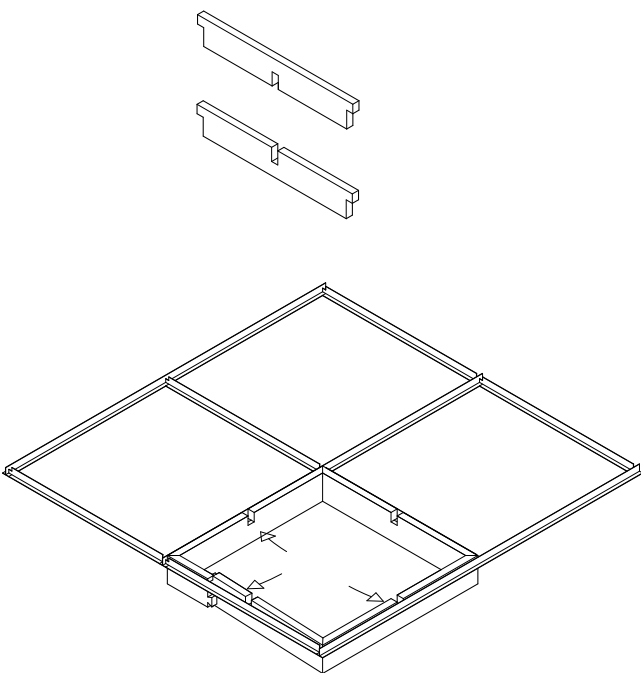
STEP 01



STEP 02



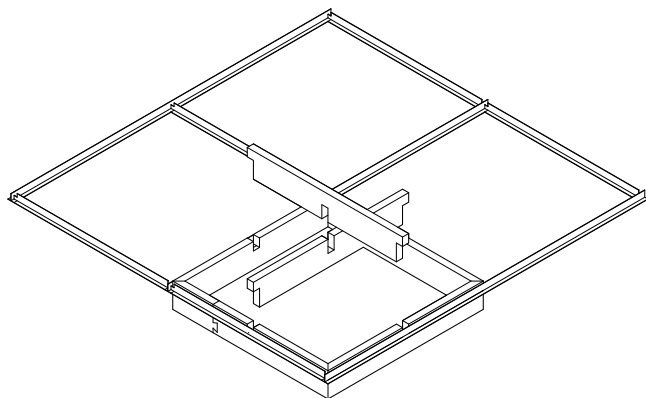
STEP 03



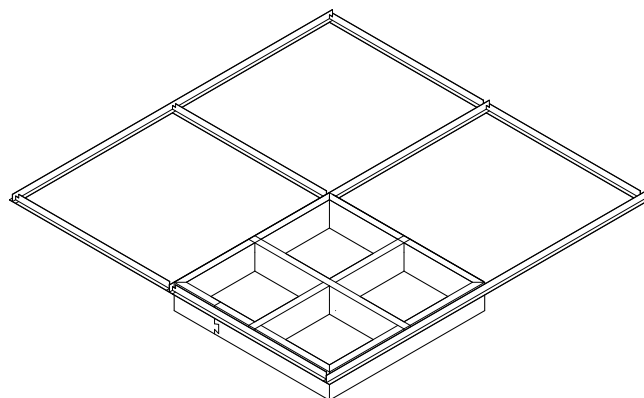
STEP 04

ASSEMBLY & INSTALLATION CONTINUED

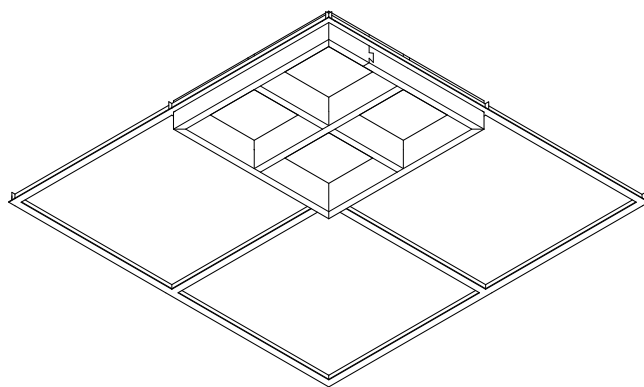
DIVIDERS



STEP 05



ASSEMBLED CHIUSO (2x2) OPEN WITH DIVIDERS FROM ABOVE



ASSEMBLED CHIUSO (2x2) OPEN WITH DIVIDERS FROM BELOW

ACOUSTICS

APPARENT NRC RATINGS

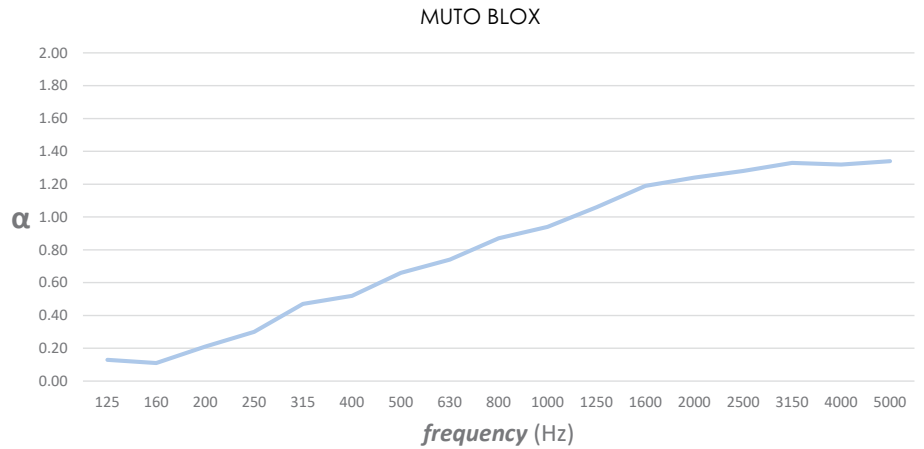
NRC values are typically used for flat surfaces of a given surface area, e.g. carpet or wall coverings. When rating hanging objects that are spread out, the 'Apparent NRC' is used.

WHAT IS NRC?

NRC is an acronym for Noise Reduction Coefficient. This is a convenient single rating for assessing the absorbency of a material. This can be used to predict its efficacy for reducing reverberation within a room. NRC the absorption coefficients at 125 Hz, 250 Hz, 500 Hz and 1,000 Hz, rounded to the nearest 0.05.

WHY NOT STC?

STC (Sound Transmission Class) is a value used to describe the amount of sound that passes through a barrier. This can be given to a material or an entire wall assembly. If you need to assess how well a barrier can block sound between rooms you'll need to know the STC rating. Acoustic baffles are not used to physically divide rooms, but rather to absorb noise within a room. Problematic noise in a room is called reverberation. This can manifest as droning or ringing sound when people are speaking, or in the worst case: an echo. For this reason, NRC or SAA are the appropriate rating systems for treating reverberation issues.



BLOX	SAMPLE FREQUENCY (Hz)				NRC	SAA
	250	500	1000	2000		
6"	0.30	0.66	0.94	1.24	0.80	0.79

***NRC values are from Blox 6" baffles spaced at 6" on center. Blox 4" baffles have slightly lower values and Blox 8" baffles will have higher values.

ENVIRONMENTAL

DECLARE, MINDFUL MATERIALS & GREENGUARD GOLD CERTIFIED

We care about the environment and it matters that our materials support healthy and productive interior spaces. We use innovative materials but ensure that they meet the highest level of standards and expectations.

MUTO PET felt core material is 100% recyclable with no added urea formaldehyde.

Declare.

