

# MUTO PLANKT

acoustic panel &  
tile solutions

---

SOELBERG

# MUTO PLANKT

## acoustic panel & tile solutions

Rich textural wood grains that absorb sound? Yes, MUTO Wooded Plankt Tiles and Panels are your solution for designing with wood plankt that not only look real but perform acoustically for you too. Printed wood grains on PET felt make it easy to introduce the natural beauty of wood that softens sound at the same time.

Make It Cool. Make It Quiet.

### SPECIFICATION

CONTENT	100% POLYESTER (PET) FELT
CORE THICKNESS	1" (24MM) FELT
PATTERNS	PLANKT PANEL H (HORIZONTAL) PLANKT PANEL V (VERTICAL) PLANKT TILE H (HORIZONTAL) PLANKT TILE D (DIAGONAL)
GRAINS	12 WOODED GRAINS
SIZE	23.75" x 23.75"   TILE 47.5" x 96"   PANEL
WEIGHT	3/4 LB   SQUARE FOOT
ACOUSTICS	NRC 0.75
FIRE RATING	CLASS A   ASTM - E84
ENVIRONMENTAL	DELCARE, MINDFUL MATERIALS & GREENGUARD GOLD CERTIFIED. MUTO IS PRODUCED FROM 100% RECYCLABLE PET FELT WITH A MINIMUM OF 60% PRE-CONSUMER RECYCLED CONTENT.
LEAD TIME	2 - 3 WEEKS
WARRANTY	2 YEARS

### TOLERANCES & MAINTENANCE

MUTO Plankt panels and tiles consist of 1/2" PET felt wooded print grain plankt adhered to 1/2" PET felt Graphite backer panel. Choose from 12 different wood grains.

Plankt are 4" nominal. Plankt are not continuous from horizontal panels and tiles to vertical panels or diagonal tiles. For continuous plank size and spacing, order the same panel or tile orientation.

PET core is a soft fibrous material. All dimensions and squareness are subject to +/- 1/16" tolerance.

Vacuum to remove dirt and dust. Remove spills or spots immediately using a clean damp cloth. Carpet and fabric cleaners can also be used to clean. (Always test an inconspicuous area first.) Compressed air may be used to dust in difficult or hard-to-reach areas.

To disinfect, bleach can be used in accordance with CDC Cleaning & Disinfection instructions. The solution ratio is 5 tablespoons of bleach to 1 gallon of water | 4 teaspoons of bleach to 1 quart of water. Apply solution by spray and wipe off immediately. (Always test in an inconspicuous area first.)





# HOW TO SPECIFY

It is easy to specify Plankt with four simple steps.

# 1

## CHOOSE YOUR WOODED COLOR

Select from 12 beautiful printed wood grains.

# 2

## SELECT PANEL OR TILE

With full wall panel options to half panel and wall tiles, Plankt configurations are endless.

# 3

## CHOOSE PLANK ORIENTATION

For wall panels, select horizontal or vertical planks and for wall tiles, you can choose diagonal or horizontal which becomes vertical by simply rotating the tile.

# 4

## PROVIDE QUANTITY

Whether you want one panel or 100 panels, let us know what you need.



## WOODED COLOR

### MATTE FINISH

12 PRINTED WOODED GRAINS

1/2" CORE THICKNESS

100% RECYCLABLE PET FELT

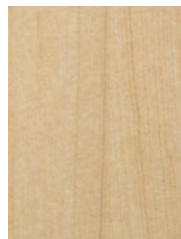
### TOLERANCES

PET felt is made from 100% recyclable polyester plastic. Slight and consistent variations in color, density, texture are inherent to this core material and should be expected. Color, density and texture will vary by dye lot. MUTO is made with a 'felling' process which results in a textural heathered effect where the fibers consist of multiple tones and shades.

Please request physical samples as colors are represented differently with different computer monitors.



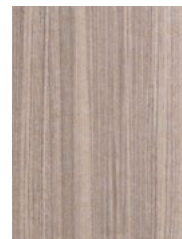
WHITE WASHED OAK



BLONDE MAPLE



NATURAL ASH



AGED ASH



SMOKED ASH



AMBER ASH



WARM WALNUT



NATURAL WALNUT



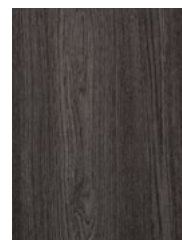
BLACK WALNUT



WEATHERED PINE



CARBON WALNUT



CHARRED OAK

## BACKER COLOR

### MATTE FINISH

GRAPHITE PET

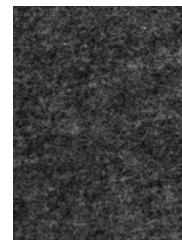
1/2" CORE THICKNESS

100% RECYCLABLE PET FELT

### TOLERANCES

PET felt is made from 100% recyclable polyester plastic. Slight and consistent variations in color, density, texture are inherent to this core material and should be expected. Color, density and texture will vary by dye lot. MUTO is made with a 'felling' process which results in a textural heathered effect where the fibers consist of multiple tones and shades.

Please request physical samples as colors are represented differently with different computer monitors.



GRAPHITE

SIZE

PLANKT PANEL H

47.5" x 96" PANEL SIZE  
NOMINAL 4" HORIZONTAL PLANKS

PLANKT PANEL V

47.5" x 96" TILE SIZE  
NOMINAL 4" VERTICAL PLANKS

PLANKT TILE H

23.75" x 23.75" TILE SIZE  
NOMINAL 4" HORIZONTAL PLANKS

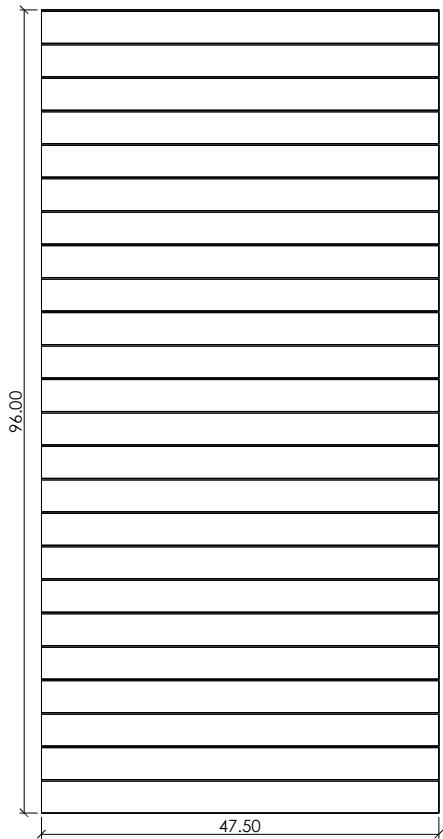
PLANKT TILE D

23.75" x 23.75" TILE SIZE  
NOMINAL 4" DIAGONAL PLANKS

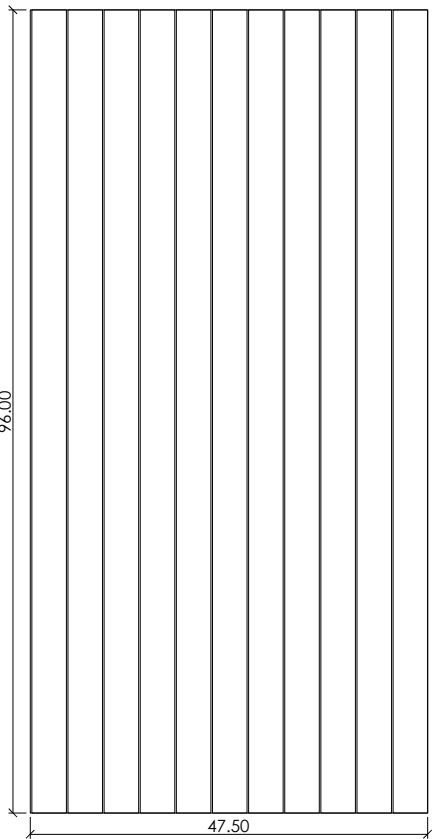
SEAM REPEAT

Plankt horizontal or vertical tiles and panels are manufactured with a reveal edge so plank spacing will continue from tile to tile or panel to panel. Diagonal tiles do not have a reveal edge and can continue in one direction or in a 'chevron-like' pattern.

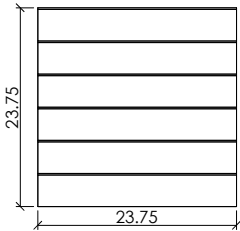
Plankt planks are 4" nominal but do not run continuous from horizontal panels or tiles to vertical panels or diagonal tiles. For continuous planks, select plank orientation and desired panel or tile quantities.



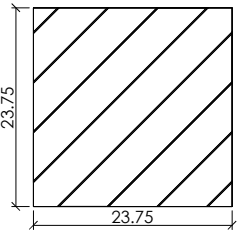
PLANKT PANEL H



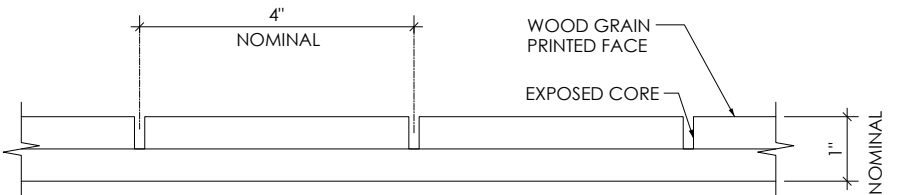
PLANKT PANEL V



PLANKT TILE H



PLANKT TILE D

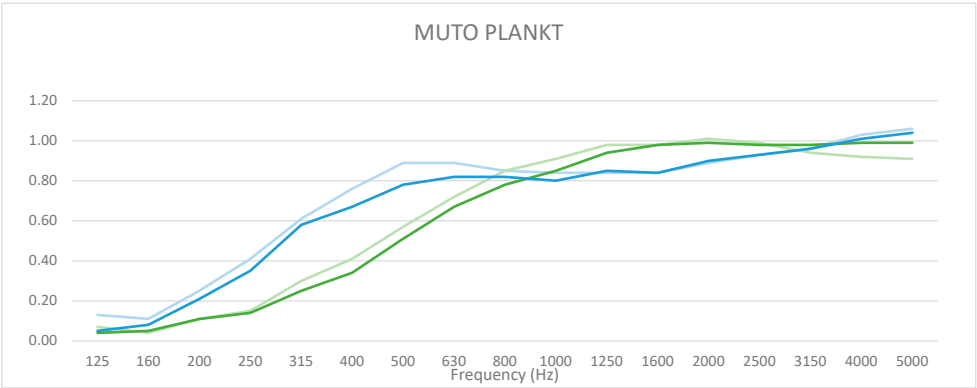


# ACOUSTICS

## NRC TEST DATA

Higher NRC ratings mean higher sound absorbency. The performance of MUTO Texture increases with an air gap between panel and wall.\*

NRC values will vary based on customization and specific installation details. Contact your sales representative to learn more.



PRODUCT	MOUNTING		SAMPLE FREQUENCY (Hz)				NRC
			250	500	1000	2000	
1" PLANKT	DIRECT	α	0.35	0.78	0.80	0.90	0.70
	Z-CLIP		0.41	0.89	0.84	0.89	0.75
1" MUTO	DIRECT	α	0.16	0.60	0.84	0.95	0.65
	Z-CLIP		0.18	0.68	1.00	1.09	0.75

# ENVIRONMENTAL

## DECLARE, MINDFUL MATERIALS & GREENGUARD GOLD CERTIFIED

We care about the environment and it matters that our materials support healthy and productive interior spaces. We use innovative materials but ensure that they meet the highest level of standards and expectations.

MUTO PET felt core material is 100% recyclable with no added urea formaldehyde.



# INSTALLATION

## ADHESIVE

Use standard construction adhesives (Liquid Nails | Titebond) and apply to the back of the panel maintaining at least a 1" border around the perimeter. Adhere to substrate providing bracing to hold material in place per adhesive curing time instructions.

## ZCLIP HARDWARE

Attach clips to the back of each panel with screw length to accommodate for the thickness of specified pattern. Anchor to substrate as required.

## STAND OFF HARDWARE

Using barrell and cap, secure panel and anchor to substrate as required. Six anchor points recommended for full sized panel.

