

MUTO TONE

acoustic panel solutions

 SOELBERG

MUTO TONE

acoustic panel solutions

MUTO Tone acoustic panels are your solution for creating bold graphic statements that quiet any interior. Made from 2 - 1/2" PET felt panels, MUTO Tone are lightweight, easy to install and can cover any surface. From walls and ceilings and even suspended from the ceiling, let MUTO acoustics do all the sound softening.

Make It Cool. Make It Quiet.

SPECIFICATION

CONTENT	100% POLYESTER (PET) FELT	
CORE THICKNESS	1" (24MM) FELT	
PATTERNS	TONE-ON-TONE (TT)	
	BANDA TT	BOSCO TT
	CUBINI TT	CURVA TT
	LENTO TT	LUCI TT
	PEZZO TT	PISTA TT
	CAMPO TT	GOCCIO TT
	LUOGO TT	SOPRA TT
	TWO-TONE (2T)	
	BANDA 2T	BOSCO 2T
	CUBINI 2T	CURVA 2T
	LENTO 2T	LUCI 2T
	PEZZO 2T	PISTA 2T
	CAMPO 2T	GOCCIO 2T
	LUOGO 2T	SOPRA 2T
COLORWAYS	27 COLORWAYS TO COMBINE	
PANEL SIZE	48" x 96"	
WEIGHT	1 LB SQUARE FOOT	
ACOUSTICS	0.40 NRC OR GREATER	
FIRE RATING	CLASS A ASTM - E84	
ENVIRONMENTAL	DEL CARE, MINDFUL MATERIALS & GREENGUARD GOLD CERTIFIED. MUTO IS PRODUCED FROM 100% RECYCLABLE PET FELT WITH A MINIMUM OF 60% PRE-CONSUMER RECYCLED CONTENT.	
LEAD TIME	2 - 3 WEEKS	
WARRANTY	2 YEARS	

TOLERANCE

PET core is a soft fibrous material. All dimensions and squareness are subject to +/- 1/16" tolerance.

MAINTENANCE

Vacuum to remove dirt and dust. Remove spills or spots immediately using a clean damp cloth. Carpet and fabric cleaners can also be used to clean. (Always test an inconspicuous area first.) Compressed air may be used to dust in difficult or hard-to-reach areas.

To disinfect, bleach can be used in accordance with CDC Cleaning & Disinfection instructions. The solution ratio is 5 tablespoons of bleach to 1 gallon of water | 4 teaspoons of bleach to 1 quart of water. Apply solution by spray and wipe off immediately. (Always test in an inconspicuous area first.)



HOW TO SPECIFY

It is easy to specify Tone with four simple steps.

1

CHOOSE YOUR PATTERN

Select from 12 Tone-On-Tone patterns also available as Two-Tone options.

2

SELECT COLOR

With 27 colorways to choose from ranging from bold bright color to soft and heathered neutrals, select the perfect core color for your pattern.

3

SELECT BACKER COLOR

Choose from 27 colorways. Select the same color as the pattern for Tone-On-Tone or a complimentary or contrasting color for Two-Tone.

4

PROVIDE QUANTITY

From one panel to hundreds of panels, we've got your walls covered.

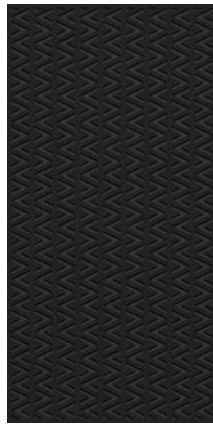


PATTERNS

12 TONE-ON-TONE PATTERNS

48" x 96" PANELS

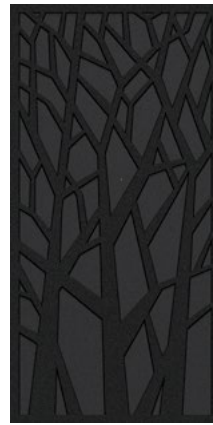
2 - 1/2" PET PANELS ATTACHED TOGETHER
(CONTACT YOUR LOCAL SALES REP FOR
CUSTOM PATTERN OPTIONS)



BANDA TT



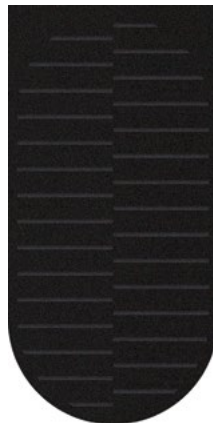
BOSCO TT



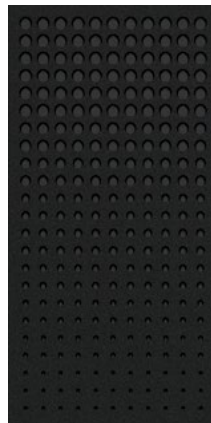
CAMPO TT



CUBINI TT



CURVA TT



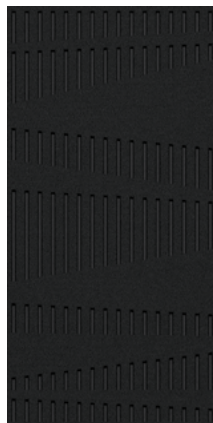
GOCCIO TT



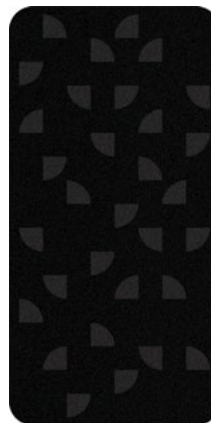
LENTO TT



LUCI TT



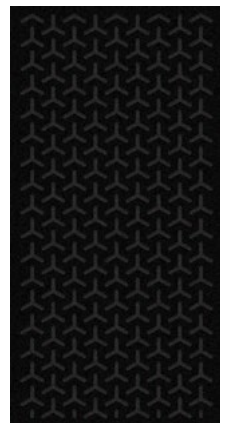
LUOGO TT



PEZZO TT



PISTA TT



SOPRA TT

PATTERNS

12 TWO-TONE PATTERNS

48" x 96" PANELS

2 - 1/2" PET PANELS ATTACHED TOGETHER

SELECT 2 COLORS | FRONT PANEL &
BACK PANEL

(CONTACT YOUR LOCAL SALES REP FOR
CUSTOM PATTERN OPTIONS)



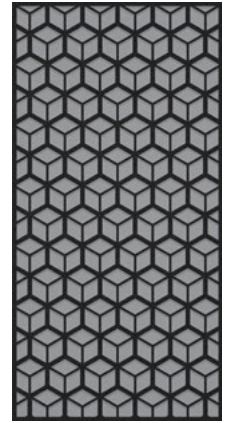
BANDA TT



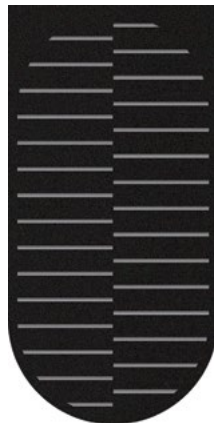
BOSCO TT



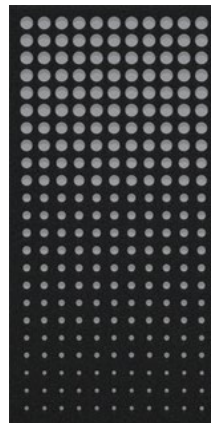
CAMPO TT



CUBINI TT



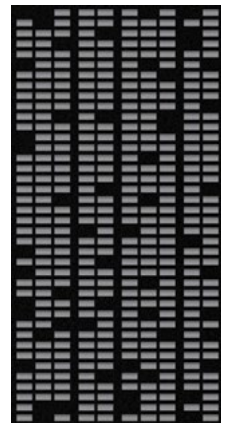
CURVA TT



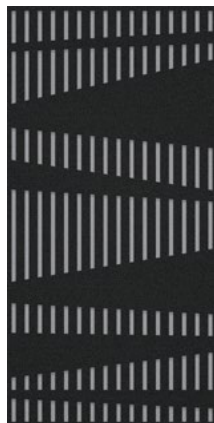
GOCCIO TT



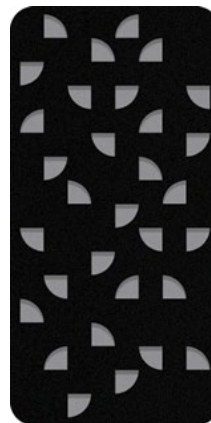
LENTO TT



LUCI TT



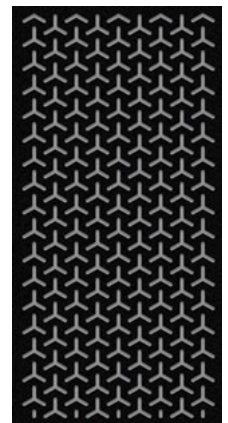
LUOGO TT



PEZZO TT



PISTA TT



SOPRA TT

COLOR

MATTE COLOR

27 STANDARD COLORS

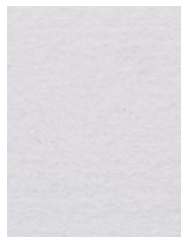
CUSTOM PRINT COLORS AVAILABLE

(CONTACT YOUR LOCAL SALES REP)

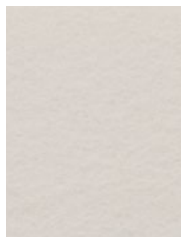
100% RECYCLABLE PET FELT

TOLERANCES

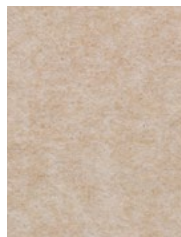
PET felt is made from 100% recyclable polyester plastic. Slight and consistent variations in color, depth, density, and texture are inherent to this core material and should be expected. Color, density and texture will vary by dye lot. MUTO is made with a 'felling' process which results in a textural heathered effect where the fibers consist of multiple tones and shades.



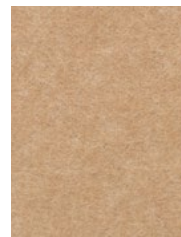
WHITE



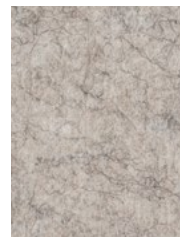
BONE



OATMEAL



CAMEL



SAND



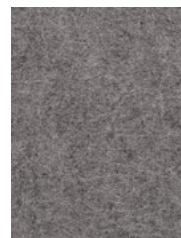
CASHMERE



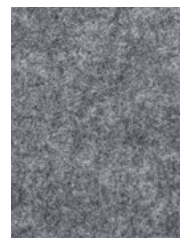
FOG



LAMB'S EAR



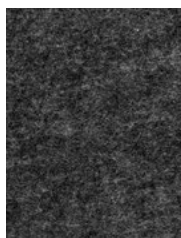
PEWTER



NORDIC KNIT



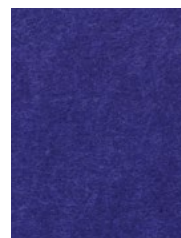
WINTER WATER



GRAPHITE



BLACK



MIDNIGHT



BLUEBERRY



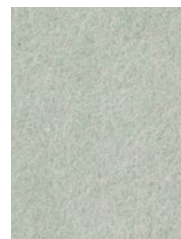
JUNIPER



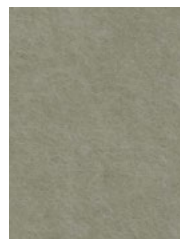
SPLASH



STORM



SEAFOAM



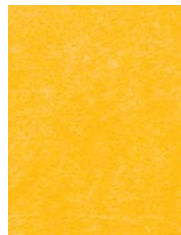
SAGE



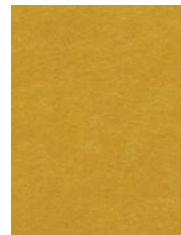
ARTICHOKE



LICHEN



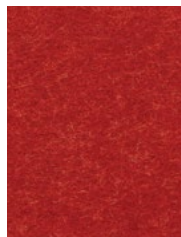
SUNSHINE



QUAKING ASPEN



CLEMENTINE



CHILI PEPPER



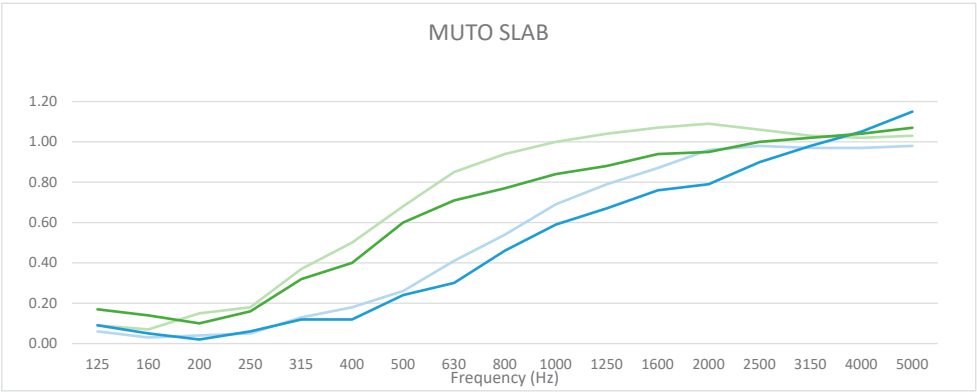
CURRANT

ACOUSTICS

NRC TEST DATA

Higher NRC ratings mean higher sound absorbency. The performance of 1/2" MUTO PET felt core material increases as the depth of air gap increases.

NRC values will vary based on customization and specific installation details. Contact your sales representative to learn more.



PRODUCT	MOUNTING		SAMPLE FREQUENCY (Hz)				NRC
			250	500	1000	2000	
1/2" MUTO	DIRECT	α	0.06	0.24	0.59	0.79	0.40
	Z-CLIP		0.05	0.26	0.69	0.96	0.50
1" MUTO	DIRECT	α	0.16	0.60	0.84	0.95	0.65
	Z-CLIP		0.18	0.68	1.00	1.09	0.75

ENVIRONMENTAL

DECLARE, MINDFUL MATERIALS & GREENGUARD GOLD CERTIFIED

We care about the environment and it matters that our materials support healthy and productive interior spaces. We use innovative materials but ensure that they meet the highest level of standards and expectations.

MUTO PET felt core material is 100% recyclable with no added urea formaldehyde.

Declare.



INSTALLATION

ADHESIVE

Use standard construction adhesives (Liquid Nails | Titebond) and apply to the back of the panel maintaining at least a 1" border around the perimeter. Adhere to substrate providing bracing to hold material in place per adhesive curing time instructions.

STAND OFF HARDWARE

Using barrell and cap, secure panel and anchor to substrate as required. Six anchor points recommended for full sized panel.

CABLE SUSPENSION HARDWARE

Select appropriate and necessary anchor and / or screws to fasten top mount to ceiling. Determine location of panel clip (2 clips per panel) and mark and drill for set screw. Tighten set screw to secure clip to panel. Thread wire into gripper and adjust to desired length. Trim excess wire after leveling.

ZCLIP HARDWARE

Attach clips to the back of each panel with screw length to accommodate for the thickness of specified pattern. Anchor to substrate as required.

