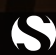


MUTO TONE

acoustic panel solutions

 SOELBERG

MUTO TONE

acoustic panel solutions

MUTO Tone acoustic panels are your solution for creating bold graphic statements that quiet any interior. Made from 2 - 1/2" PET felt panels, MUTO Tone are lightweight, easy to install and can cover any surface. From walls and ceilings and even suspended from the ceiling, let MUTO acoustics do all the sound softening.

Make It Cool. Make It Quiet.

SPECIFICATION

CONTENT	100% POLYESTER (PET) FELT		
CORE THICKNESS	1" (24MM) FELT		
PATTERNS	<div>TONE-ON-TONE</div> <div><div>BANDA TT</div><div>CUBINI TT</div><div>LUOGO TT</div></div> <div><div>BOSCO TT</div><div>CURVA TT</div><div>PISTA TT</div></div> <div><div>CAMPO TT</div><div>GOCCIO TT</div></div>		
	<div>TWO-TONE</div> <div><div>BANDA 2T</div><div>CUBINI 2T</div><div>LUOGO 2T</div></div> <div><div>BOSCO 2T</div><div>CURVA 2T</div><div>PISTA 2T</div></div> <div><div>CAMPO 2T</div><div>GOCCIO 2T</div></div>		
COLORWAYS	21 COLORWAYS TO COMBINE		
PANEL SIZE	48" x 96"		
WEIGHT	1 LB SQUARE FOOT		
ACOUSTICS	0.40 NRC OR GREATER		
FIRE RATING	CLASS A ASTM - E84		
ENVIRONMENTAL	DELCARE, MINDFUL MATERIALS & GREENGUARD GOLD CERTIFIED. MUTO IS PRODUCED FROM 100% RECYCLABLE PET FELT WITH A MINIMUM OF 60% PRE-CONSUMER RECYCLED CONTENT.		
LEAD TIME	2 - 3 WEEKS		
WARRANTY	2 YEARS		



MAINTENANCE

Vacuum to remove dirt and dust. Remove spills or spots immediately using a clean damp cloth. Carpet and fabric cleaners can also be used to clean. (Always test an inconspicuous area first.) Compressed air may be used to dust in difficult or hard-to-reach areas.

To disinfect, bleach can be used in accordance with CDC Cleaning & Disinfection instructions. The solution ratio is 5 tablespoons of bleach to 1 gallon of water | 4 teaspoons of bleach to 1 quart of water. Apply solution by spray and wipe off immediately. (Always test in an inconspicuous area first.)

PATTERNS

8 TONE-ON-TONE PATTERNS

48" x 96" PANELS

2 - 1/2" PET PANELS ATTACHED TOGETHER
(CONTACT YOUR LOCAL SALES REP FOR
CUSTOM PATTERN OPTIONS)



BANDA 2T



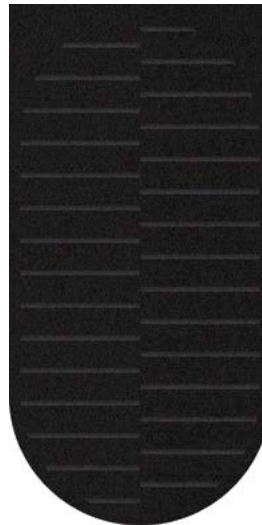
BOSCO 2T



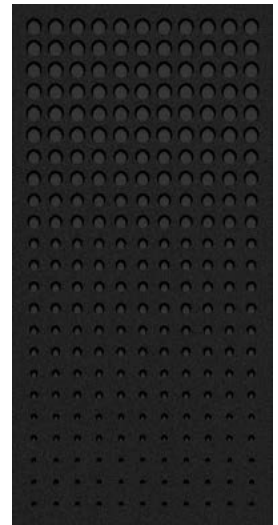
CAMPO 2T



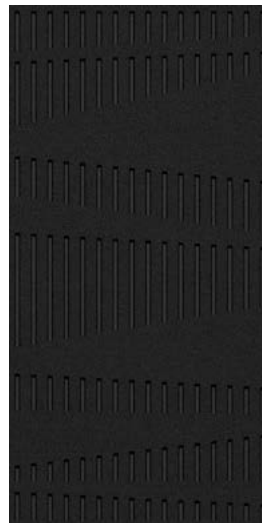
CUBINI 2T



CURVA 2T



GOCCIO 2T



LUOGO 2T



PISTA 2T

PATTERNS

8 TWO-TONE PATTERNS

48" x 96" PANELS

2 - 1/2" PET PANELS ATTACHED TOGETHER

SELECT 2 COLORS | FRONT PANEL & BACK PANEL

(CONTACT YOUR LOCAL SALES REP FOR
CUSTOM PATTERN OPTIONS)



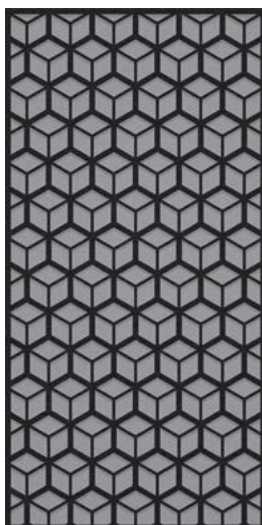
BANDA 2T



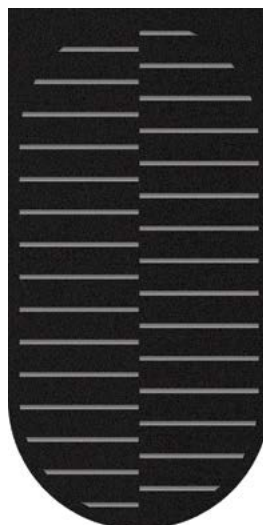
BOSCO 2T



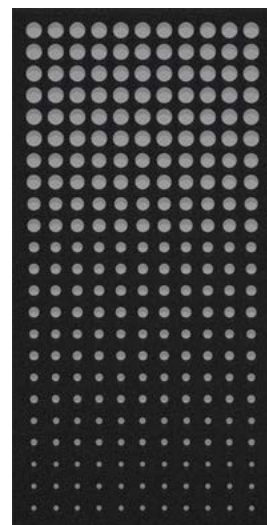
CAMPO 2T



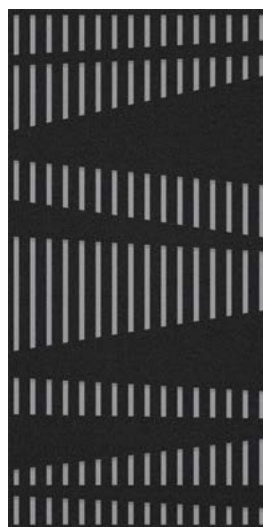
CUBINI 2T



CURVA 2T



GOCCIO 2T



LUOGO 2T



PISTA 2T

1/2" (12MM) COLORWAYS

MATTE COLOR

21 STANDARD COLORS

CUSTOM PRINT COLORS AVAILABLE

(CONTACT YOUR LOCAL SALES REP)

100% RECYCLABLE PET FELT

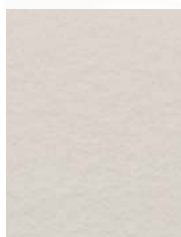


TOLERANCES

PET felt is made from 100% recyclable polyester plastic. Slight and consistent variations in color, density, texture are inherent to this core material and should be expected. Color, density and texture will vary by dye lot. MUTO is made with a 'felting' process which results in a textural heathered effect where the fibers consist of multiple tones and shades.



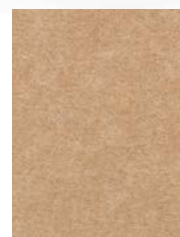
WHITE



BONE



OATMEAL



CAMEL



SAND



CASHMERE



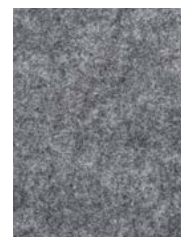
FOG



LAMB'S EAR



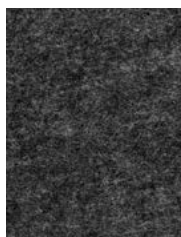
PEWTER



NORDIC KNIT



WINTER WATER



GRAPHITE



BLACK



MIDNIGHT



SPLASH



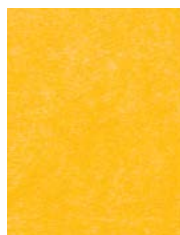
STORM



SEAFOAM



LICHEN



SUNSHINE



CLEMENTINE



CHILI PEPPER

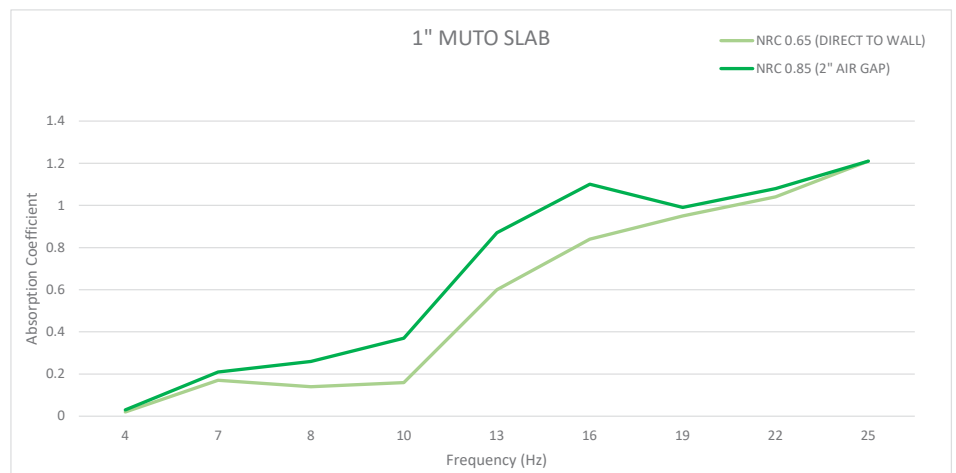
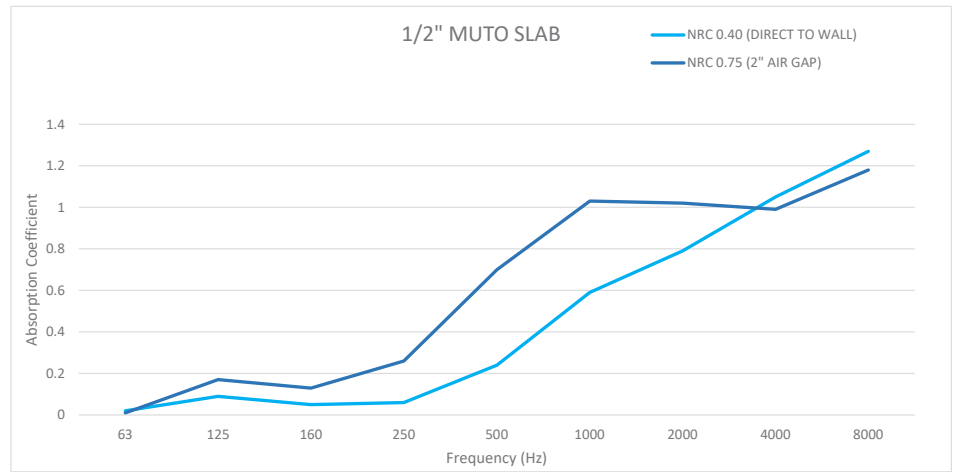
ACOUSTICS

NRC TEST DATA

NRC values are typically used for flat surfaces of a given surface area, e.g. carpet or wall coverings. When testing hanging objects that are spread out, the 'Apparent NRC' is used.

Higher NRC ratings mean higher sound absorbency. The performance of both 1/2" and 1" MUTO Slab increases as the depth of air gap increases.

NRC values will vary based on customization and specific installation details. Contact your sales representative to learn more.



ENVIRONMENTAL

DECLARE, MINDFUL MATERIALS & GREENGUARD GOLD CERTIFIED

We care about the environment and it matters that our materials support healthy and productive interior spaces. We use innovative materials but ensure that they meet the highest level of standards and expectations.

MUTO PET felt core material is 100% recyclable with no added urea formaldehyde.



INSTALLATION

ADHESIVE

Use standard construction adhesives (Liquid Nails | Titebond) and apply to the back of the panel maintaining at least a 1" border around the perimeter. Adhere to substrate providing bracing to hold material in place per adhesive curing time instructions.

STAND OFF HARDWARE

Using barrell and cap, secure panel and anchor to substrate as required. Six anchor points recommended for full sized panel.

CABLE SUSPENSION HARDWARE

Select appropriate and necessary anchor and / or screws to fasten top mount to ceiling. Determine location of panel clip (2 clips per panel) and mark and drill for set screw. Tighten set screw to secure clip to panel. Thread wire into gripper and adjust to desired length. Trim excess wire after leveling.

ZCLIP HARDWARE

Attach clips to the back of each panel with screw length to accommodate for the thickness of specified pattern. Anchor to substrate as required.

