

# MUTO DIVIDER

acoustic panel solutions

---

 SOELBERG



# MUTO DIVIDER

## acoustic panel solutions

MUTO Dividers make it easy to define space while combining the beauty of pattern and sound absorbing functionality. Made from 1/2" PET felt, MUTO Dividers are lightweight, easy to install and can cover any surface. From walls and ceilings, to suspended from the ceiling or even used as curtains with rolling track hardware, MUTO does the work.

Make It Cool. Make It Quiet.

### SPECIFICATION

CONTENT	100% POLYESTER (PET) FELT		
CORE THICKNESS	1/2" (12MM) FELT		
PATTERNS	BANDA CUBINI LUOGO	BOSCO CURVA PISTA	CAMPO GOCCIO
COLORWAYS	21 COLORWAYS		
PANEL SIZE	48" x 96"		
WEIGHT	1/2 LB   SQUARE FOOT		
ACOUSTICS	0.35 NRC		
FIRE RATING	CLASS A   ASTM - E84		
ENVIRONMENTAL	DELCARE, MINDFUL MATERIALS & GREENGUARD GOLD CERTIFIED. MUTO IS PRODUCED FROM 100% RECYCLABLE PET FELT WITH A MINIMUM OF 60% PRE-CONSUMER RECYCLED CONTENT.		
LEAD TIME	2 - 3 WEEKS		
WARRANTY	2 YEARS		



### MAINTENANCE

Vacuum to remove dirt and dust. Remove spills or spots immediately using a clean damp cloth. Carpet and fabric cleaners can also be used to clean. (Always test an inconspicuous area first.) Compressed air may be used to dust in difficult or hard-to-reach areas.

To disinfect, bleach can be used in accordance with CDC Cleaning & Disinfection instructions. The solution ratio is 5 tablespoons of bleach to 1 gallon of water | 4 teaspoons of bleach to 1 quart of water. Apply solution by spray and wipe off immediately. (Always test in an inconspicuous area first.)

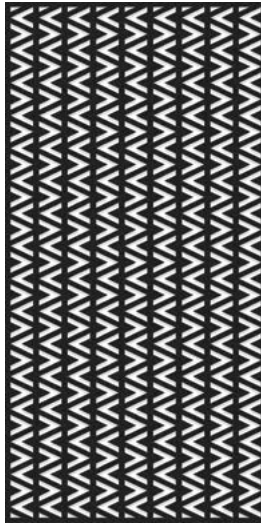


## PATTERNS

### 8 STANDARD PATTERNS

48" x 96" PANELS

(CONTACT YOUR LOCAL SALES REP FOR  
CUSTOM PATTERN OPTIONS)



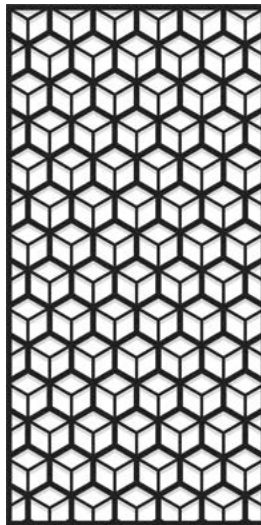
BANDA



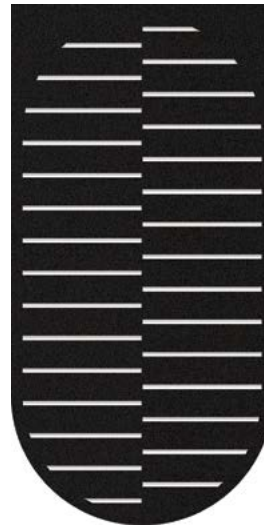
BOSCO



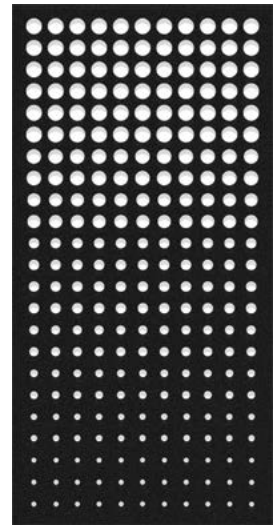
CAMPO



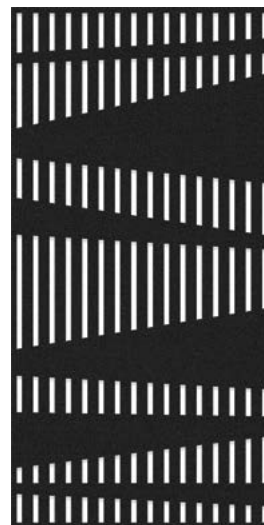
CUBINI



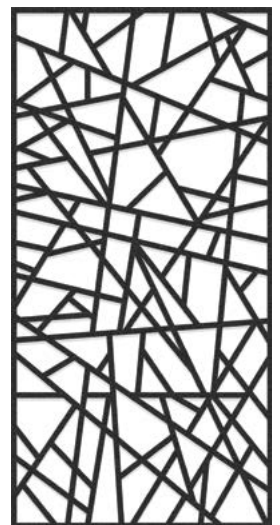
CURVA



GOCCIO



LUOGO



PISTA

# 1/2" (12MM) COLORWAYS

## MATTE COLOR

21 STANDARD COLORS

CUSTOM PRINT COLORS AVAILABLE

(CONTACT YOUR LOCAL SALES REP)

100% RECYCLABLE PET FELT

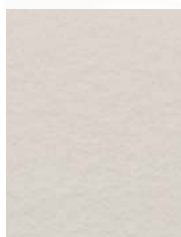


## TOLERANCES

PET felt is made from 100% recyclable polyester plastic. Slight and consistent variations in color, density, texture are inherent to this core material and should be expected. Color, density and texture will vary by dye lot. MUTO is made with a 'felting' process which results in a textural heathered effect where the fibers consist of multiple tones and shades.



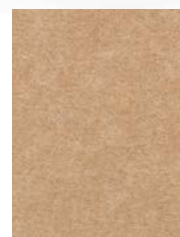
WHITE



BONE



OATMEAL



CAMEL



SAND



CASHMERE



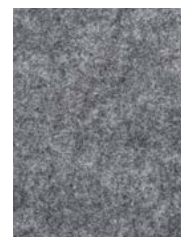
FOG



LAMB'S EAR



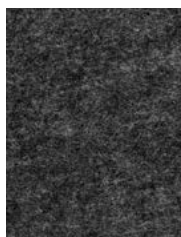
PEWTER



NORDIC KNIT



WINTER WATER



GRAPHITE



BLACK



MIDNIGHT



SPLASH



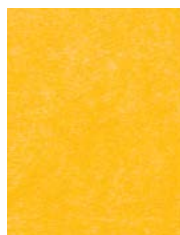
STORM



SEAFOAM



LICHEN



SUNSHINE



CLEMENTINE



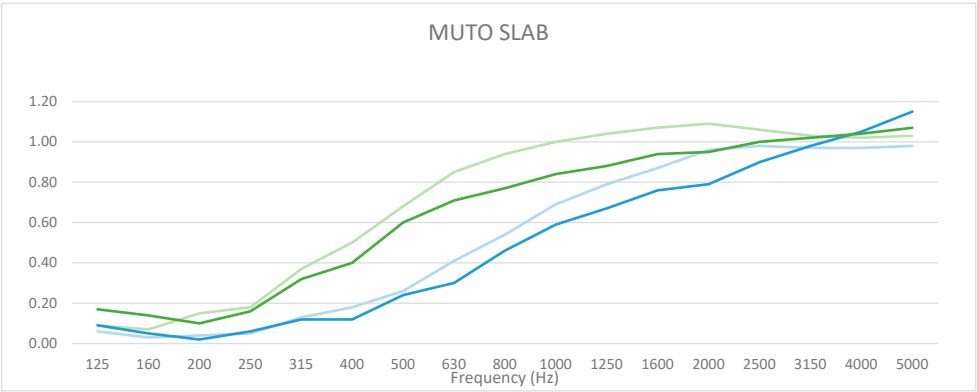
CHILI PEPPER

# ACOUSTICS

## NRC TEST DATA

Higher NRC ratings mean higher sound absorbency. The performance of 1/2" MUTO PET felt core material increases as the depth of air gap increases.

NRC values will vary based on customization and specific installation details. Contact your sales representative to learn more.



PRODUCT	MOUNTING		SAMPLE FREQUENCY (Hz)				NRC
			250	500	1000	2000	
1/2" MUTO	DIRECT	α	0.06	0.24	0.59	0.79	0.40
	Z-CLIP		0.05	0.26	0.69	0.96	0.50
1" MUTO	DIRECT		0.16	0.60	0.84	0.95	0.65
	Z-CLIP		0.18	0.68	1.00	1.09	0.75

# ENVIRONMENTAL

## DECLARE, MINDFUL MATERIALS & GREENGUARD GOLD CERTIFIED

We care about the environment and it matters that our materials support healthy and productive interior spaces. We use innovative materials but ensure that they meet the highest level of standards and expectations.

MUTO PET felt core material is 100% recyclable with no added urea formaldehyde.





# INSTALLATION

## ADHESIVE

Use standard construction adhesives (Liquid Nails | Titebond) and apply to the back of the panel maintaining at least a 1" border around the perimeter. Adhere to substrate providing bracing to hold material in place per adhesive curing time instructions.

## STAND OFF HARDWARE

Using barrell and cap, secure panel and anchor to substrate as required. Six anchor points recommended for full sized panel.

## CABLE SUSPENSION HARDWARE

Select appropriate and necessary anchor and / or screws to fasten top mount to ceiling. Determine location of panel clip (2 clips per panel) and mark and drill for set screw. Tighten set screw to secure clip to panel. Thread wire into gripper and adjust to desired length. Trim excess wire after leveling.

## ROLLER HARDWARE

Insert nylon locks in roller plate at provided holes. Drill pilot holes through panel 4 inches from each end. Insert cover plate into holes and align roller plate and cover plate. Tighten plates with screws. Screw until ends are flush with cover plate. Slide roller plates attached to panel into aluminum rail. Insert rail stopper and tighten bolts to fix.

