



SOELBERG | INDUSTRIES  
2014 CATALOG



At Soelberg Industries, we believe. We believe in innovation. We believe in creativity. We believe in the elements of nature. We believe in texture. And, we believe in the evolution of design.

Our primary goal is to inspire you with the endless possibilities created by our beautiful and sophisticated architectural products. By utilizing cutting-edge technology, technique and tools along with some forward thinking, we provide the highest quality in element and design all produced in the United States. And, because we use eco-friendly materials and manufacturing processes, we demonstrate our commitment to the environment and its sustainability as well.

Family owned and operated since 1996, our in-depth knowledge of production and manufacturing affords us the experience necessary to produce superior products. As hands-on owners/managers, Kirk and Steve work together to lead with and share their knowledge and expertise. Our team is dedicated to consistency, quality, fast and efficient production and the details of design while offering a variety of products at competitive prices. At Soelberg Industries, we not only care about our employees but value our customers as partners as we welcome them to participate in the creation process with us. Our objective is to “texture” your life. The world is not flat.

Sincerely,  
Kirk Soelberg, Owner/ Production and Manufacturing  
Steve Soelberg, Owner/Product Design and Development

*[Handwritten signature of Kirk Soelberg]*  
*[Handwritten signature of Steve Soelberg]*

Photographer: Christie Soelberg  
Location: Wasatch Recovery, Salt Lake City, UT  
Pattern: Ondata  
Finish: Portuna Dark





Designer: Janine Peterson  
Project: CorePower Yoga  
Location: Bethesda, MD  
Pattern: Fiore  
Finish: White HG

TABLES OF CONTENTS

TEXTURED PANEL SYSTEMS	6	DIVIDER SYSTEMS	78
CLASSIC COLLECTION	8	RAMO	81
ONDA ONE	11	FORBICI	82
ONDA TWO	12	LEGNO	85
ROBOANTE	15	MONDO	86
LISCIO	16	DIAMONTE	89
SERPENTE	19	LAMELLA	90
COLARE	20	ALEVARE	92
SCULTURA	23	ANGOLI	92
GEMMA	24	BICCHIERE	93
FAVO	27	PORTALI	93
CANTENA	27		
BLOCCO	28	SLAB PANEL SYSTEMS	95
STRISCIA	28	SLAB PANEL SPECIFICATIONS	96
CARTA	28		
BAMBU	28	MATRIX SYSTEMS	98
SPACCATO	29	PIASTRA	101
TURBINE	29		
PIOGGIA	29	FURNITURE	102
SCOLPITO	29	TEXTURED BENCHES	105
		CAFE TABLES	111
ELEVATE COLLECTION	30		
SCALPELLO	33	3D LAMINATE FINISHES	114
OCEANO	34		
STATUA	37	TEXTURED PANEL - HOW TO SPECIFY	116
ONDATA	38		
FLUSSO	41	DIVIDER - HOW TO SPECIFY	118
STRISCIONE	42		
NUOTARE	44	LEED INFORMATION	120
FASCINO	44		
STILLARE	45	GREEN INITIATIVE - MATERIALS USED	121
SCALA	45		
TESSERE	46	TERMS AND CONDITIONS	122
COLLINA	46		
RIGA LUNGA	47		
SABBIA	47		
SUONO	47		
VETRINO	47		
IMPRESSIONS COLLECTION	48		
BELLINO	50		
SALDARE	53		
IORE	54		
ALBERO	57		
HEXAGONO	58		
ENIGMA	61		
TREPPIEDE	62		
CUBO	62		
ROSA	63		
CERCHI	63		
NATURA TEXTURE PANELS	64		
CAMELLIA	66		
NIDO	69		
TUMULO	70		
VERME	73		
BRUCCO	74		
FALENA	75		
LUMACA	76		
RAGGIO	77		

COVER PHOTO  
Designer: Angelica Henry  
Design Firm: Angelica Henry Design  
Photographer: Mark Boisclair  
Location: Residential, Gilbert, AZ  
Pattern: Onda Two  
Finish: Wenge



# TEXTURED PANEL SYSTEMS

tex•ture ['teks tʃər]

1. The visual and tactile quality of the surface of a panel resulting from the way in which the materials are designed and formed.



Designer: Lori Taplett  
Design Firm: Zocalos Interiors  
Photographer: Christie Soelberg  
Location: Square Spa, Las Vegas, NV  
Pattern: Oceano  
Finish: Paint-grade



TEXTURED PANELS  
CLASSIC COLLECTION



Designer: TCBY Corporate  
Photographer: Christie Soelberg  
Location: Fashion Place, Salt Lake City , UT  
Pattern: Custom  
Finish: Paint-grade





Photographer: Michael Soelberg  
 Location: SpringHill Suites, Draper, UT  
 Pattern: Onda One  
 Finish: Paint-grade

CLASSIC COLLECTION  
 ONDA ONE



PATTERN DIRECTION: HORIZONTAL/VERTICAL  
 PATTERN DEPTH: 1/2"  
 MAXIMUM CORE THICKNESS: 3/4"  
 PATTERN REPEATING TYPE: HORIZONTAL/VERTICAL



CLASSIC COLLECTION  
ONDA TWO



PATTERN DIRECTION: HORIZONTAL/VERTICAL  
PATTERN DEPTH: 1/2"  
MAXIMUM CORE THICKNESS: 3/4"  
PATTERN REPEATING TYPE: HORIZONTAL/VERTICAL

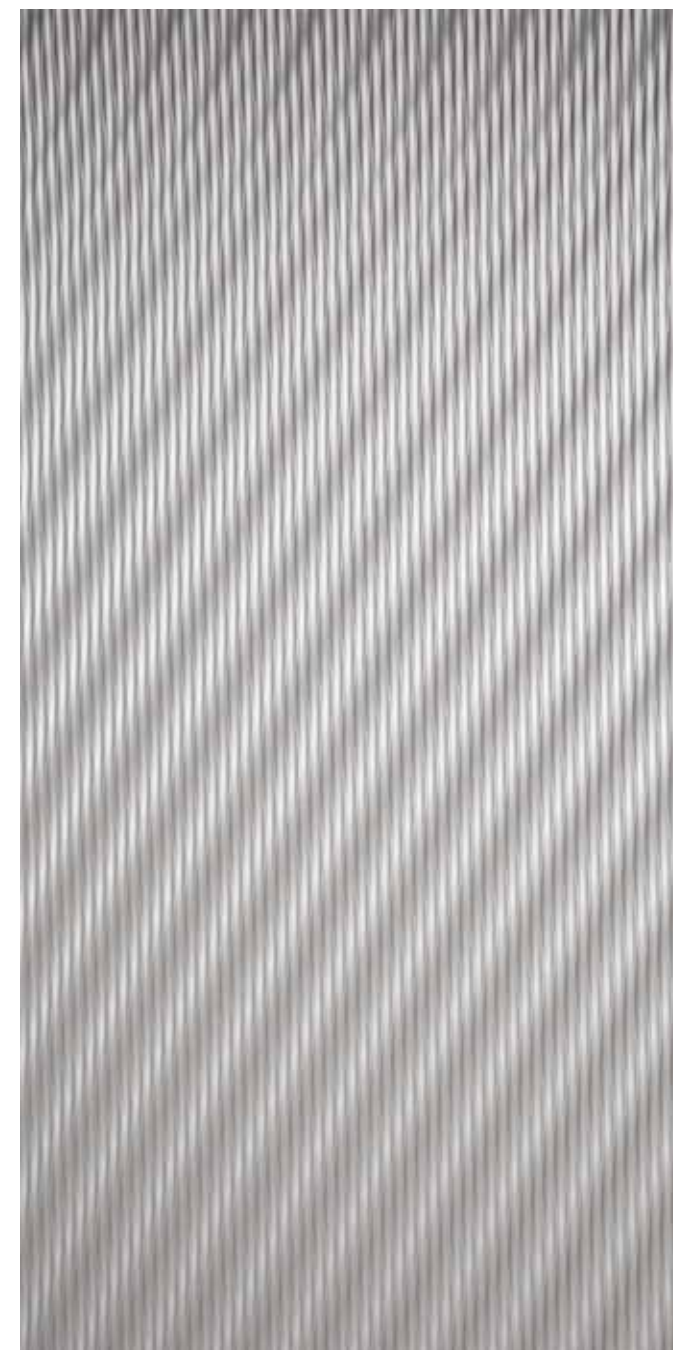


Designer: Stephanie Dickson  
Design Firm: Midwest Commercial Interiors  
Photographer: Michael Soelberg  
Location: Solution Stream, Lehi, UT  
Pattern: Onda Two  
Finish: Paint-grade





## CLASSIC COLLECTION ROBOANTE



PATTERN DIRECTION: HORIZONTAL/VERTICAL  
 PATTERN DEPTH: 3/8"  
 MAXIMUM CORE THICKNESS: 3/4"  
 PATTERN REPEATING TYPE: HORIZONTAL/VERTICAL

Designer: Cynthia Wood  
 Design Firm: Beecher Walker  
 Photographer: Christie Soelberg  
 Location: Ruth's Chris, Salt Lake City, UT  
 Pattern: Roboante  
 Finish: Shimmer



CLASSIC COLLECTION  
LISCIO



PATTERN DIRECTION: HORIZONTAL/VERTICAL  
PATTERN DEPTH: 3/8"  
MAXIMUM CORE THICKNESS: 3/4"  
PATTERN REPEATING TYPE: HORIZONTAL/VERTICAL



Designer: Penny Dille  
Project: DR Horton Model Homes  
Photographer: Michael Soelberg  
Location: Salt Lake Parade of Homes, Riverton, UT  
Pattern: Liscio  
Finish: Amatti Walnut





Photographer: Christie Soelberg  
 Location: Electronic Arts, Salt Lake City, UT  
 Pattern: Serpente  
 Finish: Carbon Fiber

## CLASSIC COLLECTION SERPENTE



PATTERN DIRECTION: HORIZONTAL/VERTICAL  
 PATTERN DEPTH: 3/8"  
 MAXIMUM CORE THICKNESS: 3/4"  
 PATTERN REPEATING TYPE: HORIZONTAL/VERTICAL



CLASSIC COLLECTION  
COLARE



PATTERN DIRECTION: HORIZONTAL/VERTICAL  
PATTERN DEPTH: 3/8"  
MAXIMUM CORE THICKNESS: 3/4"  
PATTERN REPEATING TYPE: HORIZONTAL/VERTICAL



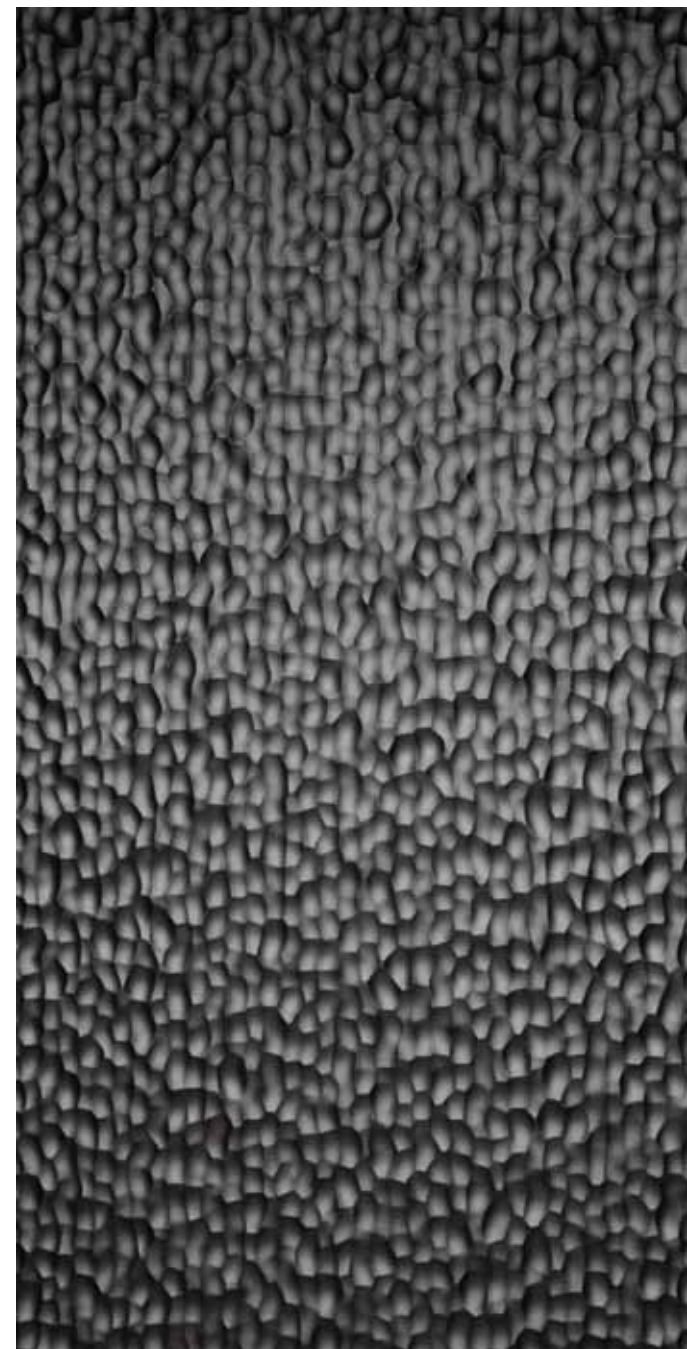
Designer: Kristen Brooksby  
Design Firm: Fringe Design  
Photographer: Danny Lee  
Location: St. George Parade of Homes, St. George, UT  
Pattern: Colare  
Finish: Wenge





Designer: Robert Laschever  
 Design Firm: Cauhaus Design  
 Photographer: Steven Laschever  
 Location: Crystal City Marriott, Arlington, VA  
 Pattern: Sculptura  
 Finish: Paint-grade

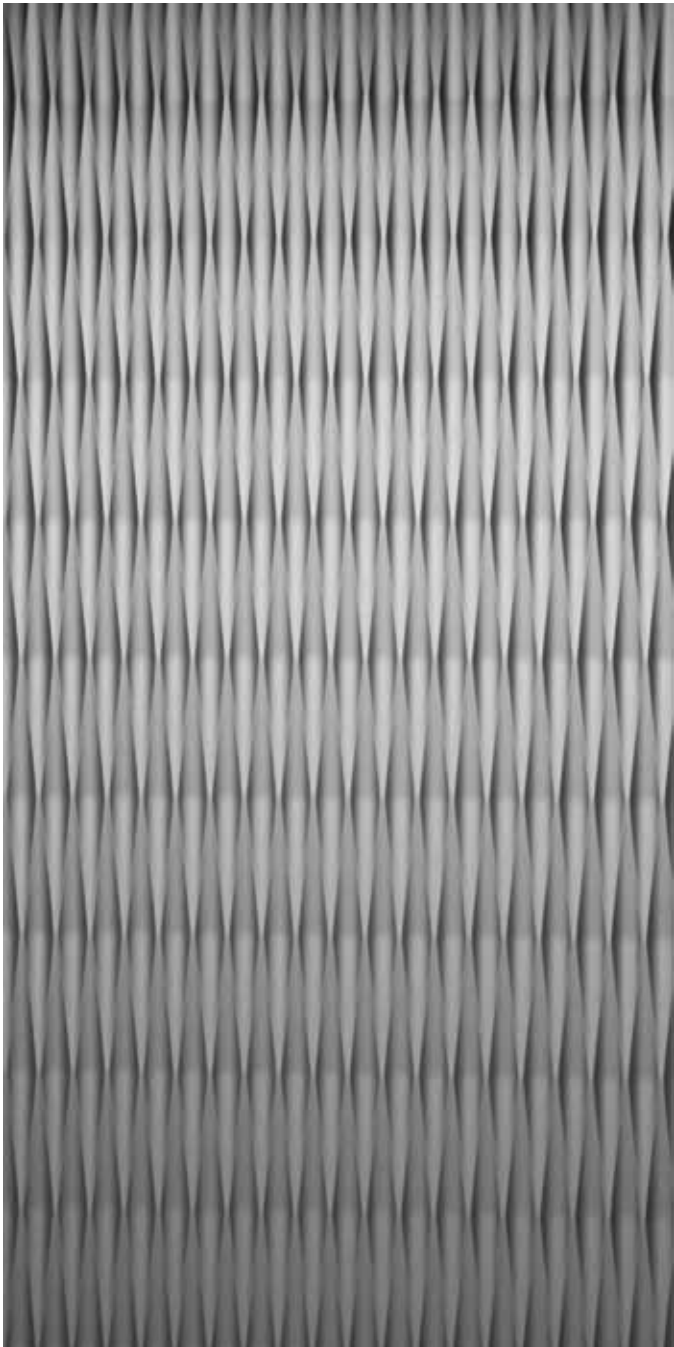
## CLASSIC COLLECTION SCULTURA



PATTERN DIRECTION: HORIZONTAL/VERTICAL  
 PATTERN DEPTH: 3/8"  
 MAXIMUM CORE THICKNESS: 3/4"  
 PATTERN REPEATING TYPE: HORIZONTAL/VERTICAL



CLASSIC COLLECTION  
GEMMA



PATTERN DIRECTION: HORIZONTAL/VERTICAL  
PATTERN DEPTH: 3/8"  
MAXIMUM CORE THICKNESS: 3/4"  
PATTERN REPEATING TYPE: HORIZONTAL/VERTICAL



Designer: Ronda Landa  
Design Firm: Icon Design  
Photographer: Michael Soelberg  
Location: SEO, Draper, UT  
Pattern: Gemma  
Finish: Brushed Aluminum





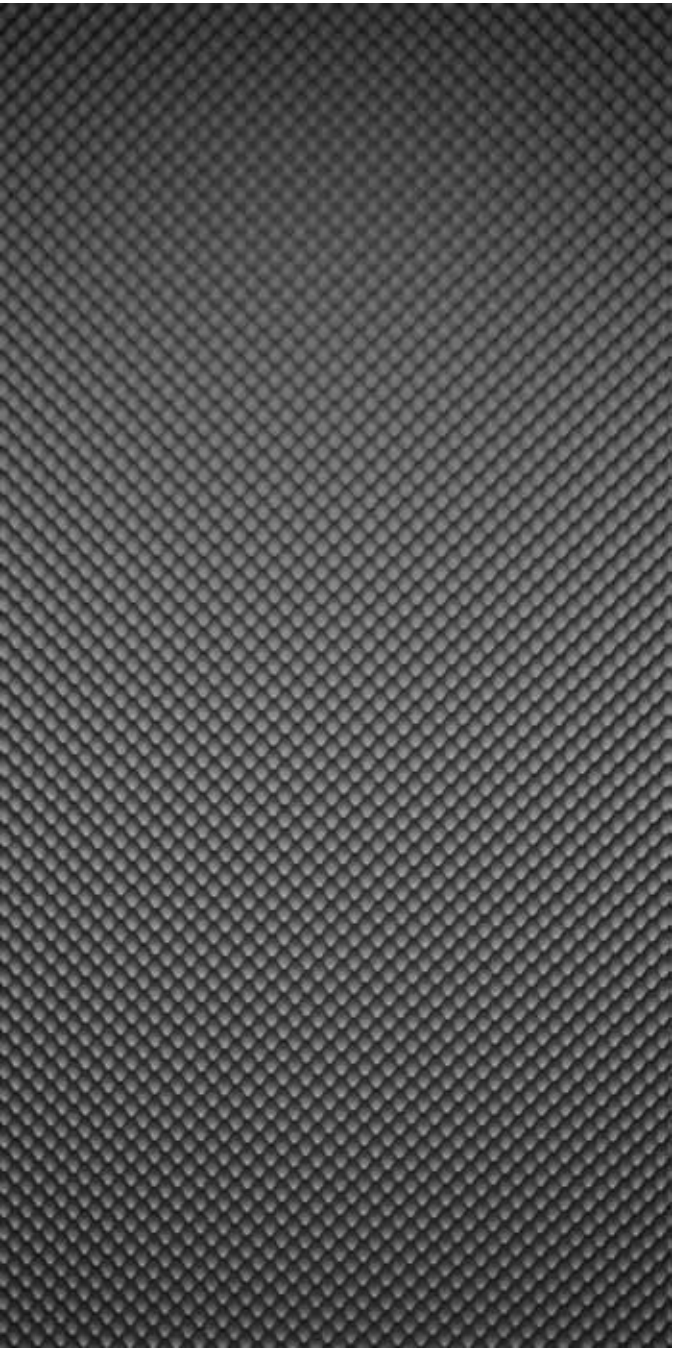
Designer: Nicole Camp  
 Design Firm: Detailed Design  
 Photographer: Michael Soellberg  
 Location: Unicity, Orem, UT  
 Pattern: Onda One  
 Finish: Brushed Aluminum

CLASSIC COLLECTION  
 FAVO



PATTERN DIRECTION: HORIZONTAL/VERTICAL  
 PATTERN DEPTH: 3/8"  
 MAXIMUM CORE THICKNESS: 3/4"  
 PATTERN REPEATING TYPE: HORIZONTAL/VERTICAL

CLASSIC COLLECTION  
 CANTENA



PATTERN DIRECTION: HORIZONTAL/VERTICAL  
 PATTERN DEPTH: 3/8"  
 MAXIMUM CORE THICKNESS: 3/4"  
 PATTERN REPEATING TYPE: HORIZONTAL/VERTICAL



CLASSIC COLLECTION  
BLOCCO



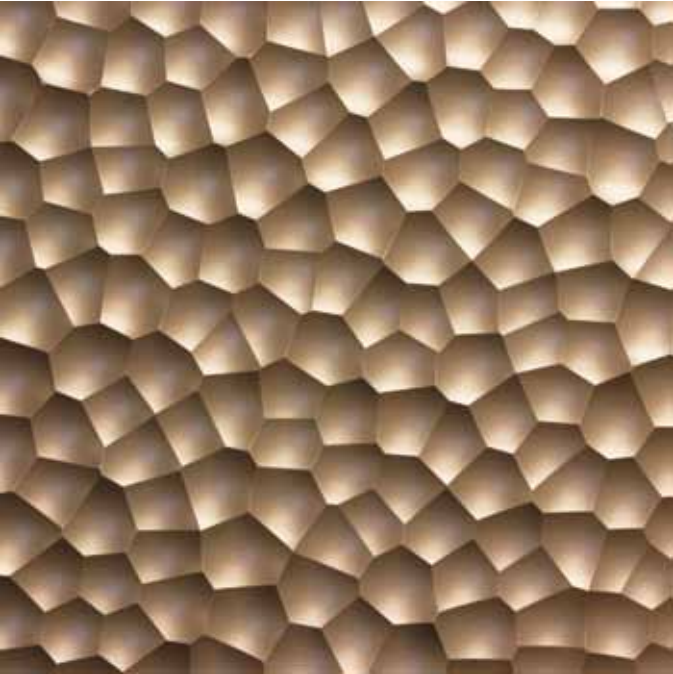
PATTERN DIRECTION: HORIZONTAL/VERTICAL  
PATTERN DEPTH: 3/8"  
MAXIMUM CORE THICKNESS: 3/4"  
PATTERN REPEATING TYPE: HORIZONTAL/VERTICAL

CLASSIC COLLECTION  
STRISCIA



PATTERN DIRECTION: HORIZONTAL/VERTICAL  
PATTERN DEPTH: 7/16"  
MAXIMUM CORE THICKNESS: 3/4"  
PATTERN REPEATING TYPE: HORIZONTAL/VERTICAL

CLASSIC COLLECTION  
SPACCATO



PATTERN DIRECTION: HORIZONTAL/VERTICAL  
PATTERN DEPTH: 3/8"  
MAXIMUM CORE THICKNESS: 3/4"  
PATTERN REPEATING TYPE: HORIZONTAL/VERTICAL

CLASSIC COLLECTION  
TURBINE



PATTERN DIRECTION: HORIZONTAL/VERTICAL  
PATTERN DEPTH: 3/8"  
MAXIMUM CORE THICKNESS: 3/4"  
PATTERN REPEATING TYPE: HORIZONTAL/VERTICAL

CLASSIC COLLECTION  
CARTA



PATTERN DIRECTION: HORIZONTAL/VERTICAL  
PATTERN DEPTH: 3/8"  
MAXIMUM CORE THICKNESS: 3/4"  
PATTERN REPEATING TYPE: HORIZONTAL/VERTICAL

CLASSIC COLLECTION  
BAMBU



PATTERN DIRECTION: HORIZONTAL/VERTICAL  
PATTERN DEPTH: 3/8"  
MAXIMUM CORE THICKNESS: 3/4"  
PATTERN REPEATING TYPE: HORIZONTAL/VERTICAL

CLASSIC COLLECTION  
PIOGGIA



PATTERN DIRECTION: HORIZONTAL/VERTICAL  
PATTERN DEPTH: 3/8"  
MAXIMUM CORE THICKNESS: 3/4"  
PATTERN REPEATING TYPE: HORIZONTAL

CLASSIC COLLECTION  
SCOLPITO



PATTERN DIRECTION: HORIZONTAL/VERTICAL  
PATTERN DEPTH: 3/8"  
MAXIMUM CORE THICKNESS: 3/4"  
PATTERN REPEATING TYPE: HORIZONTAL



TEXTURED PANELS  
ELEVATE COLLECTION



Design Firm: Christie Lewis Interiors  
Photographer: Christie Soelberg  
Location: Nate Lewis DDS, Sandy, UT  
Pattern: Ondata  
Finish: Shimmer





# ELEVATE COLLECTION SCALPELLO



PATTERN DIRECTION: HORIZONTAL/VERTICAL  
 PATTERN DEPTH: 5/8"  
 MAXIMUM CORE THICKNESS: 1 1/8"  
 PATTERN REPEATING TYPE: HORIZONTAL/VERTICAL



Design Firm: MHTN Architects  
 Location: Utah Valley Convention Center, Provo, UT  
 Photographer: Michael Soelberg  
 Pattern: Scalpello  
 Finish: Paint-grade



ELEVATE COLLECTION  
OCEANO



PATTERN DIRECTION: HORIZONTAL/VERTICAL  
PATTERN DEPTH: 7/8"  
MAXIMUM CORE THICKNESS: 1 1/8"  
PATTERN REPEATING TYPE: HORIZONTAL/VERTICAL



Designer: Brandon Read  
Location: Clear Satellite, Orem, UT  
Photographer: Michael Soelberg  
Pattern: Oceano  
Finish: White HG





Design Firm: Jeff Lincoln Interiors  
 Location: St. Giles Tuscany, New York, NY  
 Photographer: Eric Laignel  
 Pattern: Statua  
 Finish: White HG

# ELEVATE COLLECTION STATUA



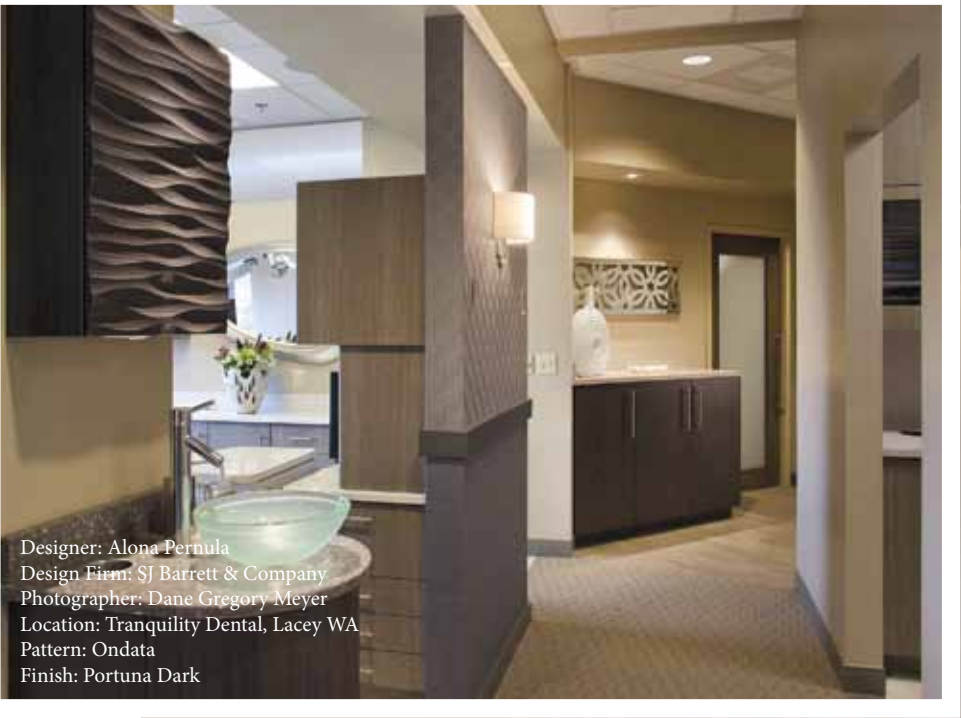
PATTERN DIRECTION: HORIZONTAL/VERTICAL  
 PATTERN DEPTH: 5/8"  
 MAXIMUM CORE THICKNESS: 1 1/8"  
 PATTERN REPEATING TYPE: HORIZONTAL/VERTICAL



ELEVATE COLLECTION  
ONDATA



PATTERN DIRECTION: HORIZONTAL/VERTICAL  
PATTERN DEPTH: 7/8"  
MAXIMUM CORE THICKNESS: 1 1/8"  
PATTERN REPEATING TYPE: HORIZONTAL/VERTICAL



Designer: Alona Pernula  
Design Firm: SJ Barrett & Company  
Photographer: Dane Gregory Meyer  
Location: Tranquility Dental, Lacey WA  
Pattern: Ondata  
Finish: Portuna Dark



Designer: Alona Pernula  
Design Firm: SJ Barrett & Company  
Photographer: Dane Gregory Meyer  
Location: Tranquility Dental, Lacey WA  
Pattern: Ondata  
Finish: Portuna Dark





Designer: Penny Dille  
 Project: DR Horton Model Homes  
 Photographer: Christie Soelberg  
 Location: Salt Lake Parade of Homes, Lehi, UT  
 Pattern: Flusso  
 Finish: Shimmer

ELEVATE COLLECTION  
 FLUSSO



PATTERN DIRECTION: HORIZONTAL/VERTICAL  
 PATTERN DEPTH: 5/8"  
 MAXIMUM CORE THICKNESS: 1 1/8"  
 PATTERN REPEATING TYPE: HORIZONTAL/VERTICAL



ELEVATE COLLECTION  
STRISCIONE



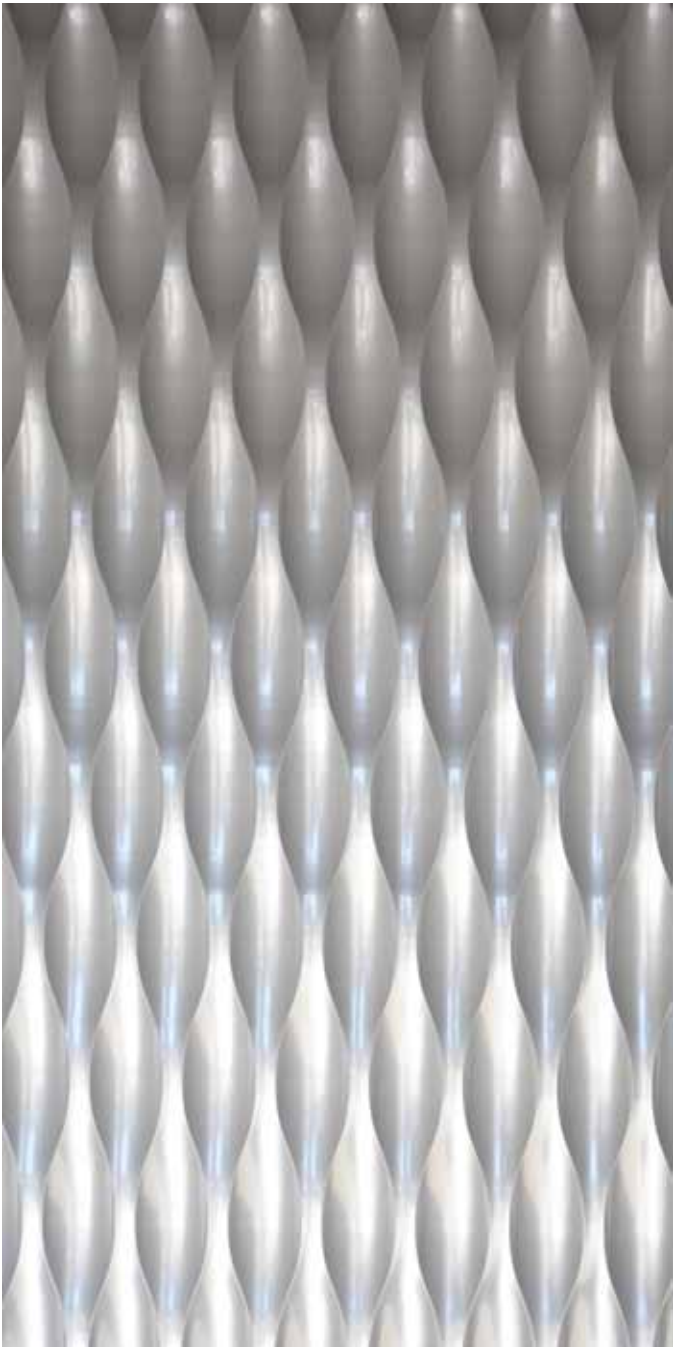
PATTERN DIRECTION: HORIZONTAL/VERTICAL  
PATTERN DEPTH: 7/8"  
MAXIMUM CORE THICKNESS: 1 1/8"  
PATTERN REPEATING TYPE: HORIZONTAL/VERTICAL



Design Firm: Soelberg Industries Design Studio  
Photographer: Christie Soelberg  
Location: Residential, Cedar Hills, UT  
Pattern: Strscione  
Finish: Wenge

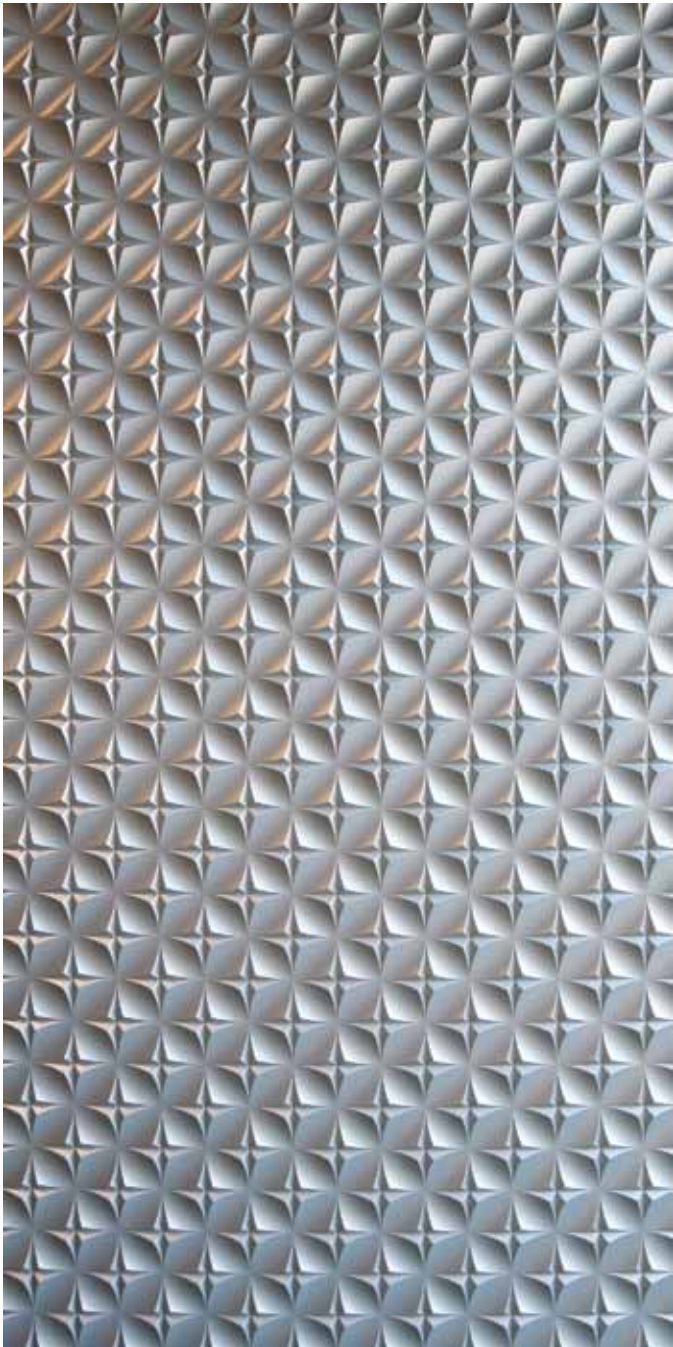


ELEVATE COLLECTION  
NUOTARE



PATTERN DIRECTION: HORIZONTAL/VERTICAL  
PATTERN DEPTH: 7/8"  
MAXIMUM CORE THICKNESS: 1 1/8"  
PATTERN REPEATING TYPE: HORIZONTAL/VERTICAL

ELEVATE COLLECTION  
FASCINO



PATTERN DIRECTION: HORIZONTAL/VERTICAL  
PATTERN DEPTH: 5/8"  
MAXIMUM CORE THICKNESS: 1 1/8"  
PATTERN REPEATING TYPE: HORIZONTAL/VERTICAL

ELEVATE COLLECTION  
STILLARE



PATTERN DIRECTION: HORIZONTAL/VERTICAL  
PATTERN DEPTH: 7/8"  
MAXIMUM CORE THICKNESS: 1 1/8"  
PATTERN REPEATING TYPE: HORIZONTAL/VERTICAL

ELEVATE COLLECTION  
SCALA



PATTERN DIRECTION: HORIZONTAL/VERTICAL  
PATTERN DEPTH: 7/8"  
MAXIMUM CORE THICKNESS: 1 1/8"  
PATTERN REPEATING TYPE: HORIZONTAL/VERTICAL



ELEVATE COLLECTION  
TESSERE



PATTERN DIRECTION: HORIZONTAL/VERTICAL  
PATTERN DEPTH: 7/8"  
MAXIMUM CORE THICKNESS: 1 1/8"  
PATTERN REPEATING TYPE: HORIZONTAL/VERTICAL

ELEVATE COLLECTION  
COLLINA



PATTERN DIRECTION: HORIZONTAL/VERTICAL  
PATTERN DEPTH: 3/8"  
MAXIMUM CORE THICKNESS: 1 1/8"  
PATTERN REPEATING TYPE: HORIZONTAL/VERTICAL

ELEVATE COLLECTION  
RIGA LUNGA



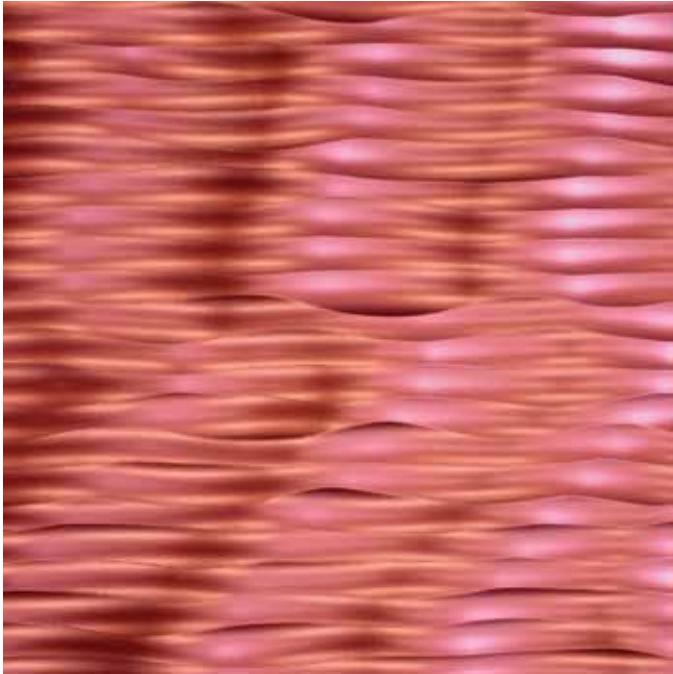
PATTERN DIRECTION: HORIZONTAL/VERTICAL  
PATTERN DEPTH: 7/8"  
MAXIMUM CORE THICKNESS: 1 1/8"  
PATTERN REPEATING TYPE: HORIZONTAL/VERTICAL

ELEVATE COLLECTION  
SUONO



PATTERN DIRECTION: HORIZONTAL/VERTICAL  
PATTERN DEPTH: 7/8"  
MAXIMUM CORE THICKNESS: 1 1/8"  
PATTERN REPEATING TYPE: HORIZONTAL/VERTICAL

ELEVATE COLLECTION  
SABBIA



PATTERN DIRECTION: HORIZONTAL/VERTICAL  
PATTERN DEPTH: 7/8"  
MAXIMUM CORE THICKNESS: 1 1/8"  
PATTERN REPEATING TYPE: HORIZONTAL/VERTICAL

ELEVATE COLLECTION  
VETRINO



PATTERN DIRECTION: HORIZONTAL/VERTICAL  
PATTERN DEPTH: 1/2"  
MAXIMUM CORE THICKNESS: 1 1/8"  
PATTERN REPEATING TYPE: HORIZONTAL/VERTICAL



TEXTURED PANELS  
IMPRESSIONS COLLECTION



Designer: Janine Peterson  
Project: CorePower Yoga  
Location: Bethesda, MD  
Pattern: Fiore  
Finish: White HG



IMPRESSIONS COLLECTION  
BELLINO



PATTERN DIRECTION: HORIZONTAL/VERTICAL  
PATTERN DEPTH: 1/4"  
MAXIMUM CORE THICKNESS: 3/4"  
PATTERN REPEATING TYPE: HORIZONTAL/VERTICAL



Designer: Ezra Lee  
Design Firm: Ezra Lee Design Build  
Photographer: Christie Soelberg  
Location: Residential, Lehi, UT  
Pattern: Bellino  
Finish: Glacier White





Designer: Rita Hendricks  
 Design Firm: idGroup  
 Photographer: Paul Schiefer  
 Location: Regus, Long Beach, CA  
 Pattern: Saldare  
 Finish: White HG

## ELEVATE COLLECTION SALDARE



PATTERN DIRECTION: HORIZONTAL/VERTICAL  
 PATTERN DEPTH: 1/2"  
 MAXIMUM CORE THICKNESS: 1 1/8"  
 PATTERN REPEATING TYPE: HORIZONTAL/VERTICAL





IMPRESSIONS COLLECTION  
FIORE



PATTERN DIRECTION: HORIZONTAL/VERTICAL  
PATTERN DEPTH: 3/8"  
MAXIMUM CORE THICKNESS: 3/4"  
PATTERN REPEATING TYPE: HORIZONTAL/VERTICAL



Designer: Penny Dille  
Project: DR Horton Model Homes  
Photographer: Christie Soelberg  
Location: DR Horton Model Home, Orem, UT  
Pattern: Fiore  
Finish: Glacier White





Designer: Kristy Arends  
 Design Firm: Core Power Yoga  
 Photographer: Michael Soelberg  
 Location: Core Power Yoga - Hyde Park Location, Chicago, IL  
 Pattern: Albero  
 Finish: White High Gloss

## IMPRESSIONS COLLECTION ALBERO



PATTERN DIRECTION: HORIZONTAL/VERTICAL  
 PATTERN DEPTH: 1/4"  
 MAXIMUM CORE THICKNESS: 3/4"  
 PATTERN REPEATING TYPE: HORIZONTAL



IMPRESSIONS COLLECTION  
HEXAGONO



PATTERN DIRECTION: HORIZONTAL/VERTICAL  
PATTERN DEPTH: 1/4"  
MAXIMUM CORE THICKNESS: 3/4"  
PATTERN REPEATING TYPE: HORIZONTAL



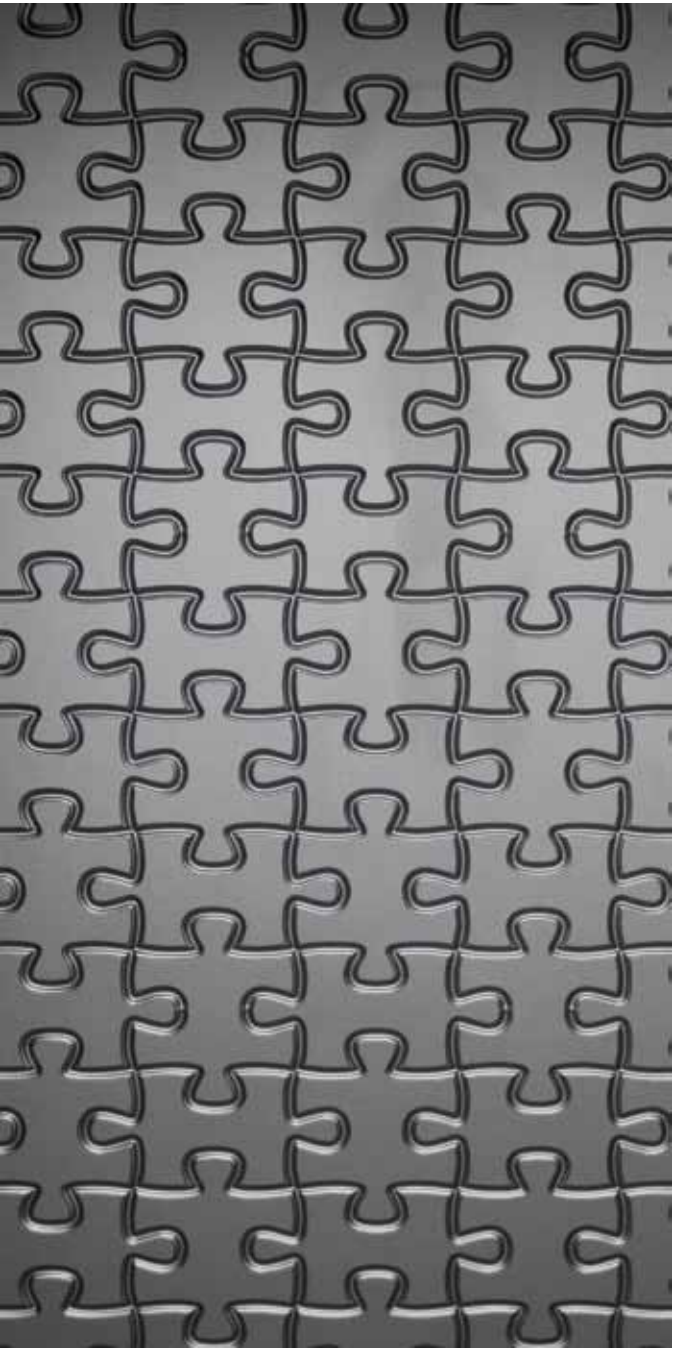
Designer: Kristina Weaver  
Design Firm: Lisman Studio  
Photographer: Christie Soelberg  
Location: Capita Financial Network, Sandy, UT  
Pattern: Hexagono  
Finish: Paint-grade





Designer: Wes Baker  
Design Firm: Babcock Design Group  
Photographer: Michael Soelberg  
Location: Uintah County Library, Vernal, UT  
Pattern: Enigma  
Finish: Milky Sketch

IMPRESSIONS COLLECTION  
ENIGMA



PATTERN DIRECTION: HORIZONTAL/VERTICAL  
PATTERN DEPTH: 3/8"  
MAXIMUM CORE THICKNESS: 3/4"  
PATTERN REPEATING TYPE: HORIZONTAL/VERTICAL



IMPRESSIONS COLLECTION  
TREMPIEDE



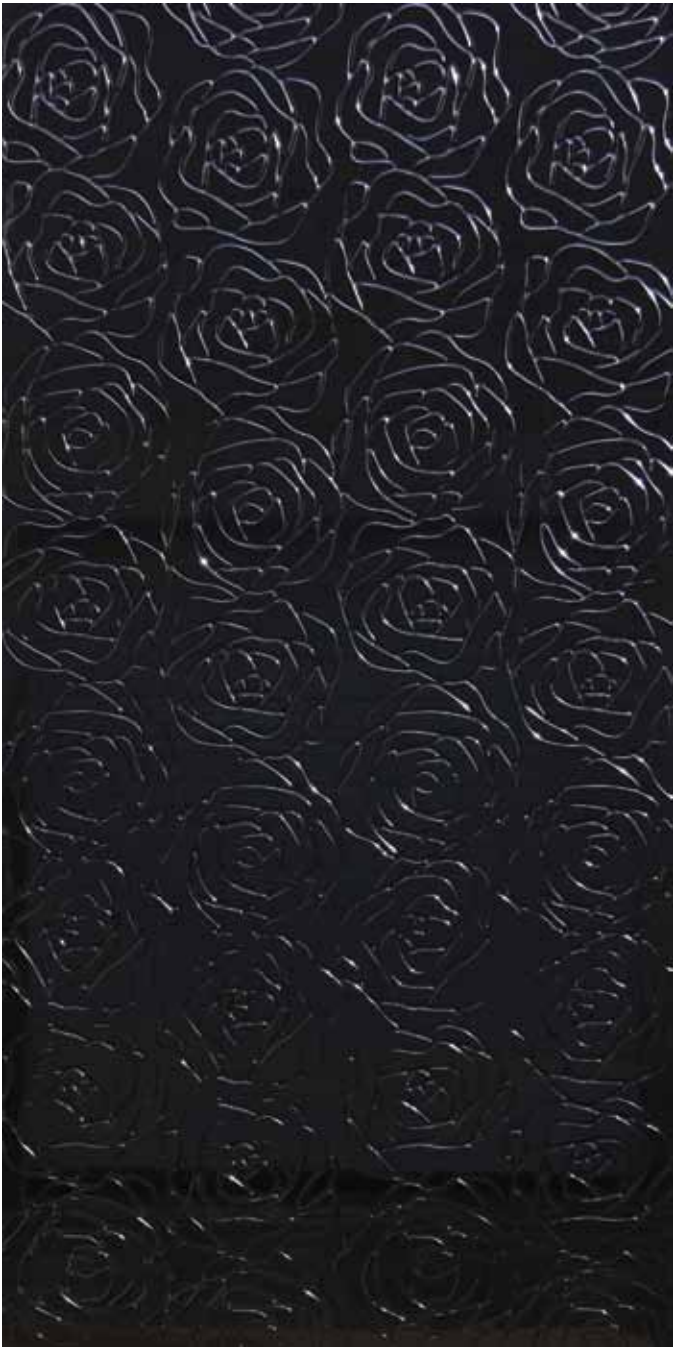
PATTERN DIRECTION: HORIZONTAL/VERTICAL  
PATTERN DEPTH: 3/8"  
MAXIMUM CORE THICKNESS: 3/4"  
PATTERN REPEATING TYPE: HORIZONTAL

IMPRESSIONS COLLECTION  
CUBO



PATTERN DIRECTION: HORIZONTAL/VERTICAL  
PATTERN DEPTH: 3/8"  
MAXIMUM CORE THICKNESS: 3/4"  
PATTERN REPEATING TYPE: HORIZONTAL

IMPRESSIONS COLLECTION  
ROSA



PATTERN DIRECTION: HORIZONTAL/VERTICAL  
PATTERN DEPTH: 3/16"  
MAXIMUM CORE THICKNESS: 3/4"  
PATTERN REPEATING TYPE: HORIZONTAL/VERTICAL

IMPRESSIONS COLLECTION  
CERCHI



PATTERN DIRECTION: HORIZONTAL/VERTICAL  
PATTERN DEPTH: 3/8"  
MAXIMUM CORE THICKNESS: 3/4"  
PATTERN REPEATING TYPE: HORIZONTAL/VERTICAL



# NATURA TEXTURE PANELS

Textures and patterns inspired by the rugged and complex landscape of Utah's own backyard.

Architectural decorative interior surfaces grown by Soelberg Industries.

Design Firm: Soelberg Industries Design Studio  
Location: Soelberg Industries, Orem, UT  
Photographer: Michael Soelberg  
Pattern: Tumulo  
Finish: High gloss clear coat



NATURA  
CAMELLIA



PANEL SIZE: 4'X8'  
PATTERN DEPTH: 3/8"  
MAXIMUM CORE THICKNESS: 3/4"

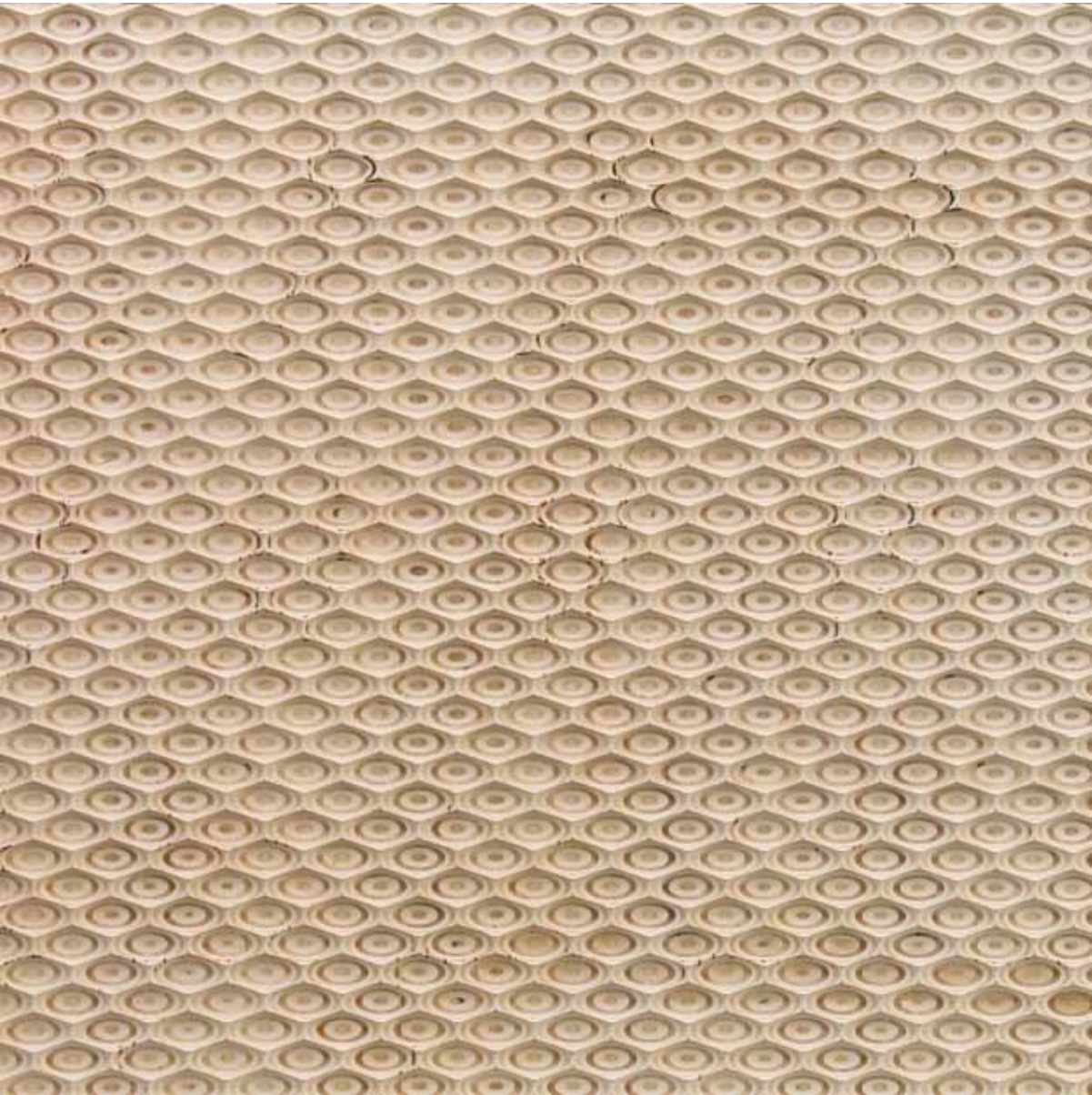


Design Firm: Soelberg Industries Design Studio  
Location: Soelberg Industries, Orem, UT  
Photographer: Christie Soelberg  
Pattern: Camellia  
Finish: High gloss clear coat





NATURA  
NIDO

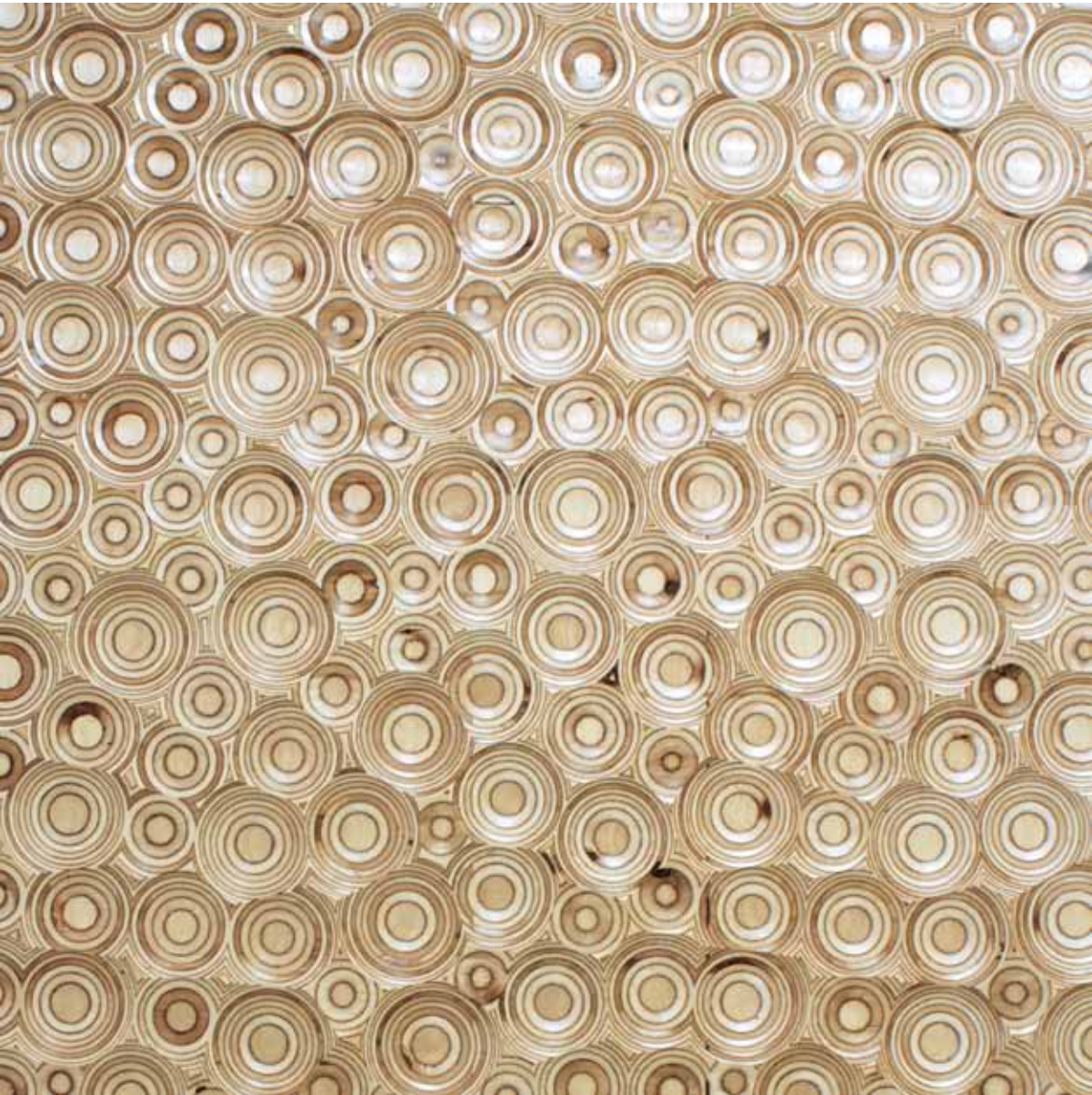


PANEL SIZE: 4'X8'  
PATTERN DEPTH: 3/8"  
MAXIMUM CORE THICKNESS: 3/4"

Design Firm: Soelberg Industries Design Studio  
Photographer: Christie Soelberg  
Location: Residential, Cedar Hills, UT  
Pattern: Nido  
Finish: High gloss clear coat



NATURA  
TUMULO



PANEL SIZE: 4'X8'  
PATTERN DEPTH: 3/8"  
MAXIMUM CORE THICKNESS: 3/4"



Design Firm: Soelberg Industries Design Studio  
Location: Soelberg Industries, Orem, UT  
Photographer: Michael Soelberg  
Pattern: Tumulo  
Finish: High gloss clear coat





NATURA  
VERME

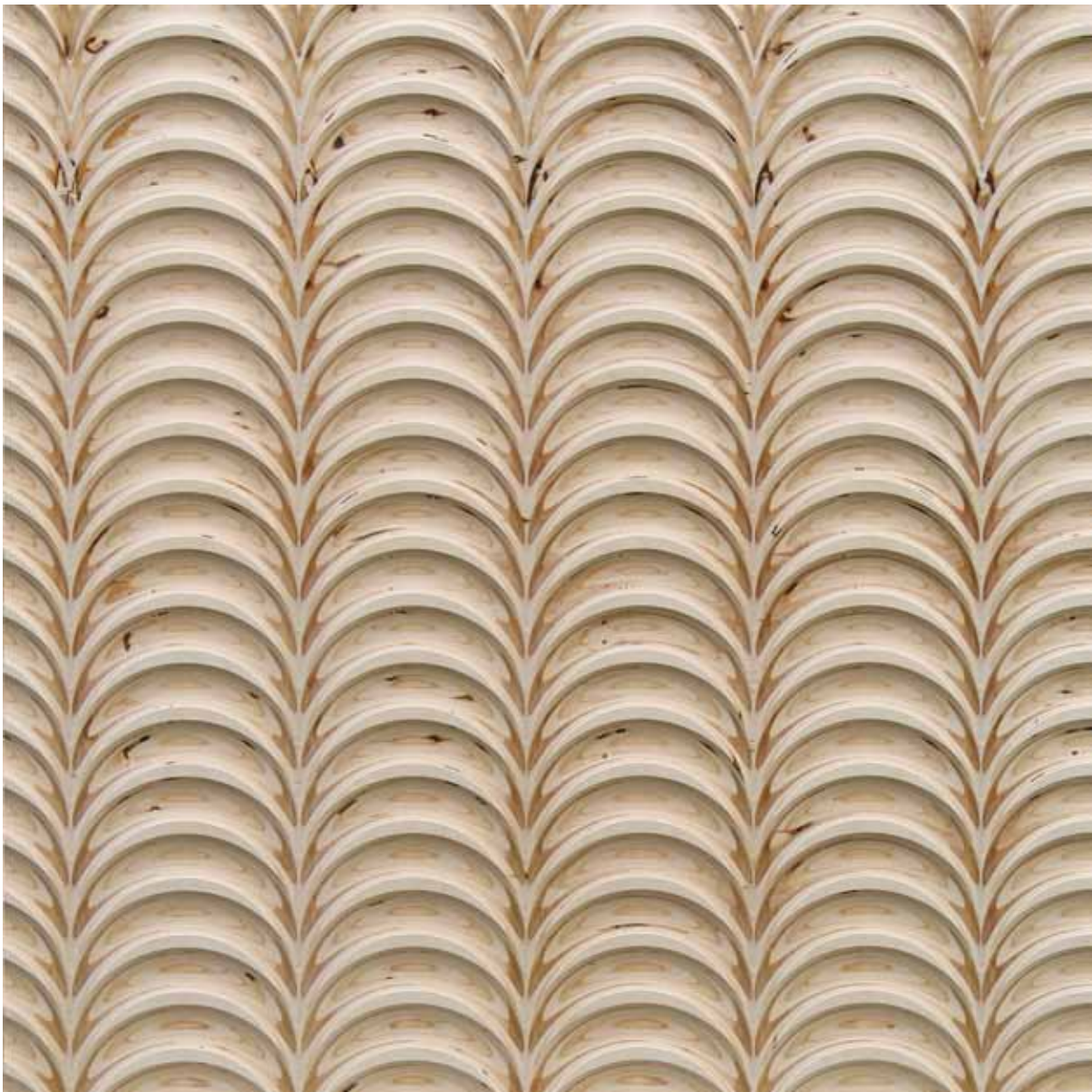


PANEL SIZE: 4'X8'  
PATTERN DEPTH: 3/8"  
MAXIMUM CORE THICKNESS: 3/4"

Designer: Heather Osmond  
Photographer: Christie Soelberg  
Location: Residential, Park City, UT  
Pattern: Verme  
Finish: Walnut Stain

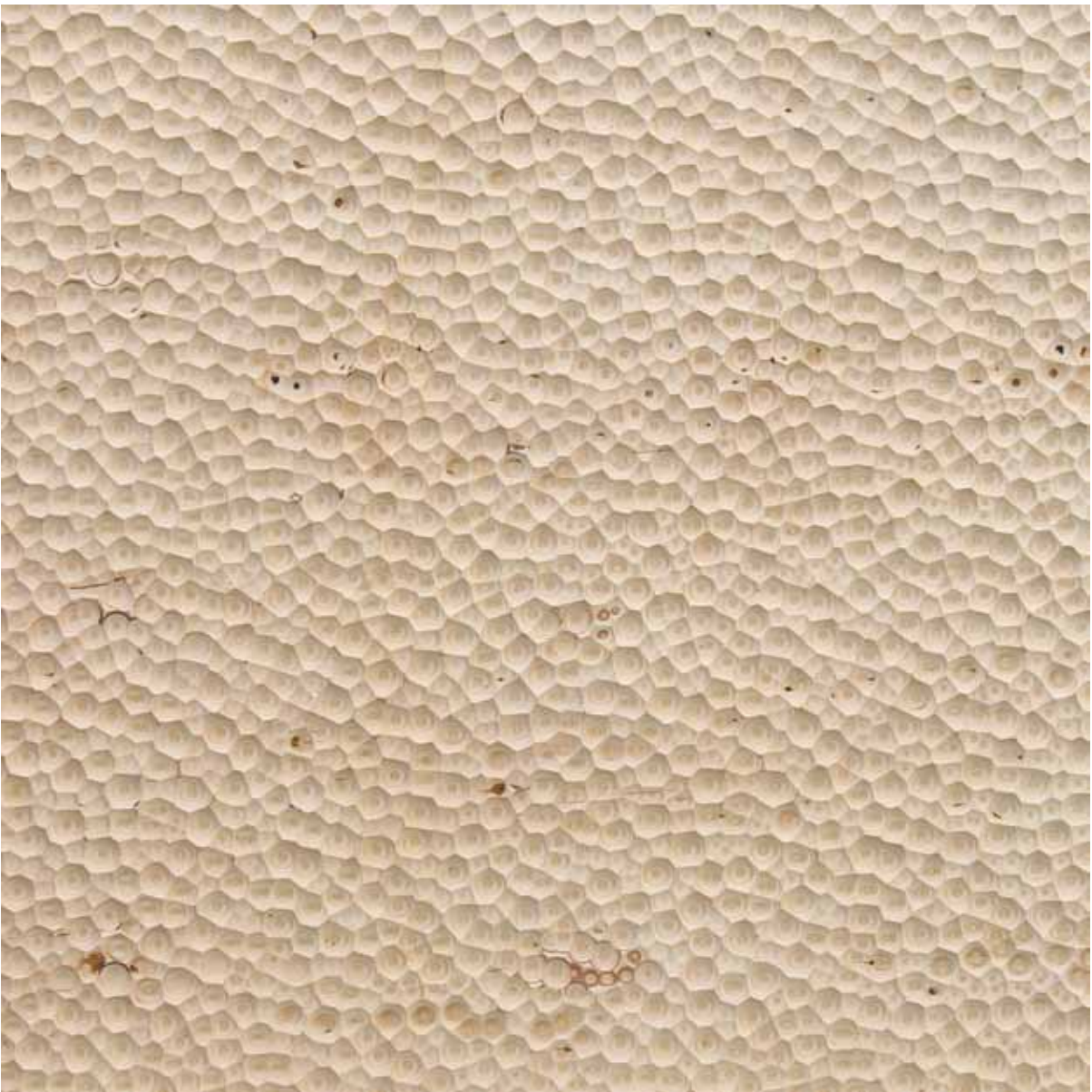


NATURA  
BRUCCO



PANEL SIZE: 4'X8'  
PATTERN DEPTH: 3/8"  
MAXIMUM CORE THICKNESS: 3/4"

NATURA  
FALENA



PANEL SIZE: 4'X8'  
PATTERN DEPTH: 3/8"  
MAXIMUM CORE THICKNESS: 3/4"



NATURA  
LUMACA



PANEL SIZE: 4'X8'  
PATTERN DEPTH: 7/16"  
MAXIMUM CORE THICKNESS: 3/4"

NATURA  
RAGGIO



PANEL SIZE: 4'X8'  
PATTERN DEPTH: 7/16"  
MAXIMUM CORE THICKNESS: 3/4"



## DIVIDER SYSTEMS

di•vide [di'vaid]

1. To separate space into parts or groups, whose parts become more valuable, functional, or asthetically pleasing than the whole.



Design Firm: Henriksen Butler  
Location: Cytozyme, Salt Lake City, UT  
Photographer: Christie Soelberg  
Pattern: Ramo  
Finish: Earthen Bronze





Designer: Melissa Davis  
 Design Firm: BSA LifeStructures  
 Location: Hendricks Regional Health, Danville, IN  
 Pattern: Ramo  
 Finish: White HG

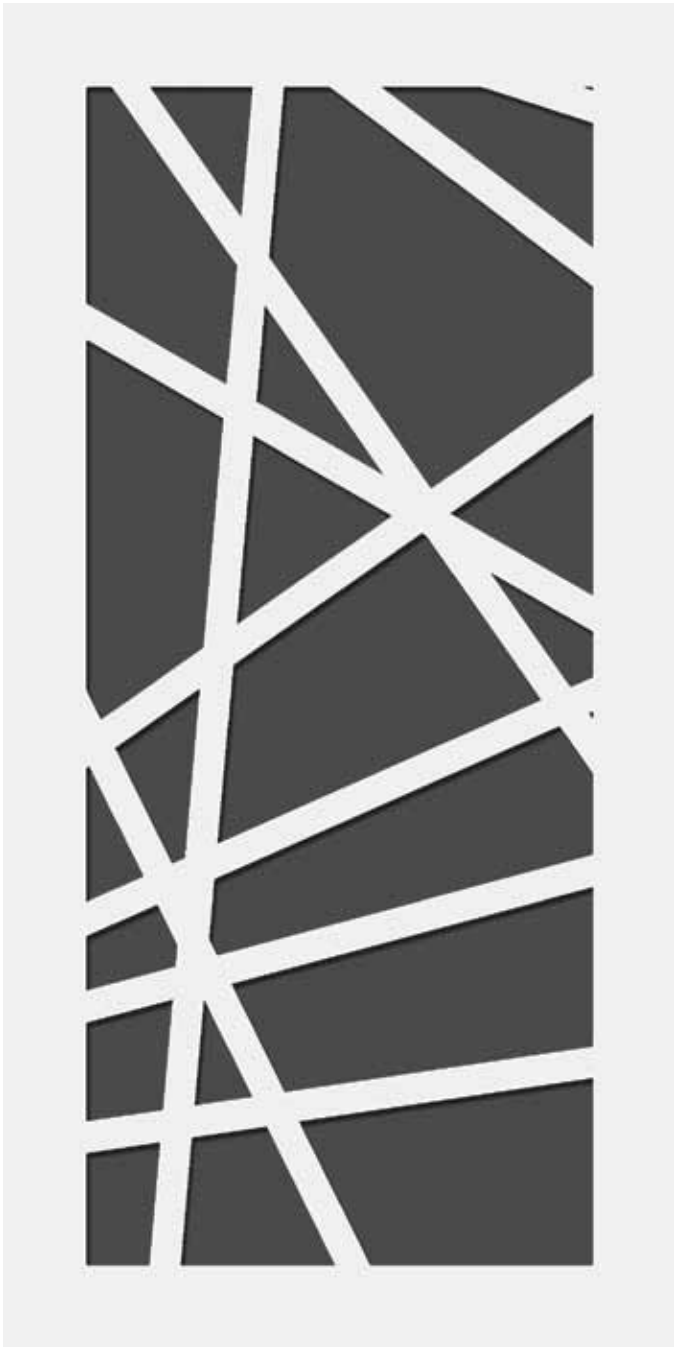
## DIVIDERS RAMO



PATTERN DEPTH: THRU CUT  
 MAXIMUM CORE THICKNESS: 3/4"  
 PATTERN REPEATING TYPE: 4'X8'  
 FINISH OPTIONS: PAINT-GRADE OR 3-D LAMINATE



DIVIDERS  
FORBICI



PATTERN DEPTH: THRU CUT  
MAXIMUM CORE THICKNESS: 3/4"  
PATTERN REPEATING TYPE: 4'X8'  
FINISH OPTIONS: PAINT-GRADE OR 3-D LAMINATE



Designer: Scott Russell Jamie Chipman  
Photographer: Christie Soelberg  
Location: Salt Lake County Library, South Jordan, UT  
Pattern: Forbici  
Finish: paint-grade





Design Firm: Soelberg Industries Design Studio  
Location: Harley Davidson, Lindon, UT  
Photographer: Michael Soelberg  
Pattern: Legno  
Finish: Portuna Dark

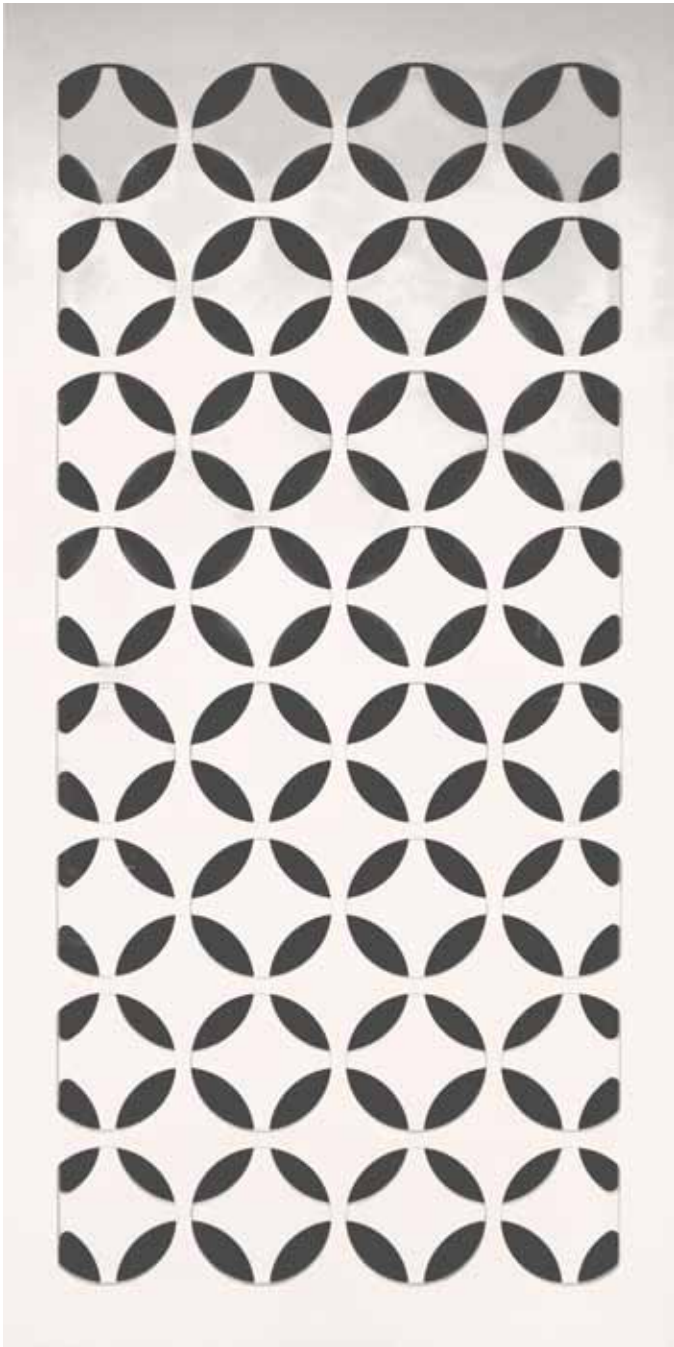
DIVIDERS  
LEGNO



PATTERN DIRECTION: HORIZONTAL/VERTICAL  
PATTERN DEPTH: THRU CUT  
MAXIMUM CORE THICKNESS: 3/4"  
FINISH OPTIONS: PAINT-GRADE OR 3-D LAMINATE



DIVIDERS  
MONDO



PATTERN DEPTH: THRU CUT  
MAXIMUM CORE THICKNESS: 3/4"  
PATTERN REPEATING TYPE: 4'X8'  
FINISH OPTIONS: PAINT-GRADE ONLY



Designer: Penny Dille  
Project: DR Horton Model Homes  
Photographer: Christie Soelberg  
Location: DR Horton Model Home, Lehi, UT  
Pattern: Mondo  
Finish: Paint-grade





Designer: Fluid Interiors  
Design Firm: Fluid Interiors Showroom  
Photographer: David Puente  
Location: Studio, Minneapolis, MN  
Pattern: Diamonte  
Finish: Paint-grade

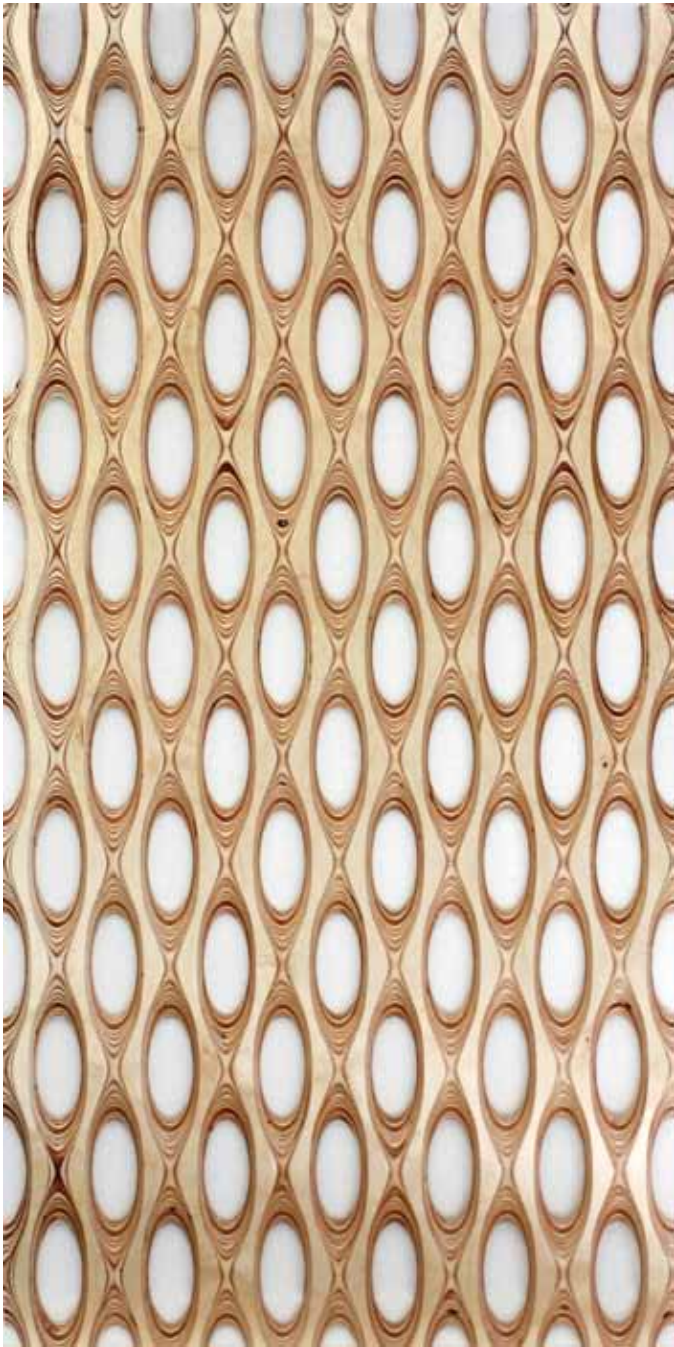
DIVIDERS  
DIAMONTE



PATTERN DEPTH: THRU CUT  
MAXIMUM CORE THICKNESS: 3/4"  
PATTERN REPEATING TYPE: 4'X8'  
FINISH OPTIONS: PAINT-GRADE ONLY



NATURE DIVIDERS  
LAMELLA



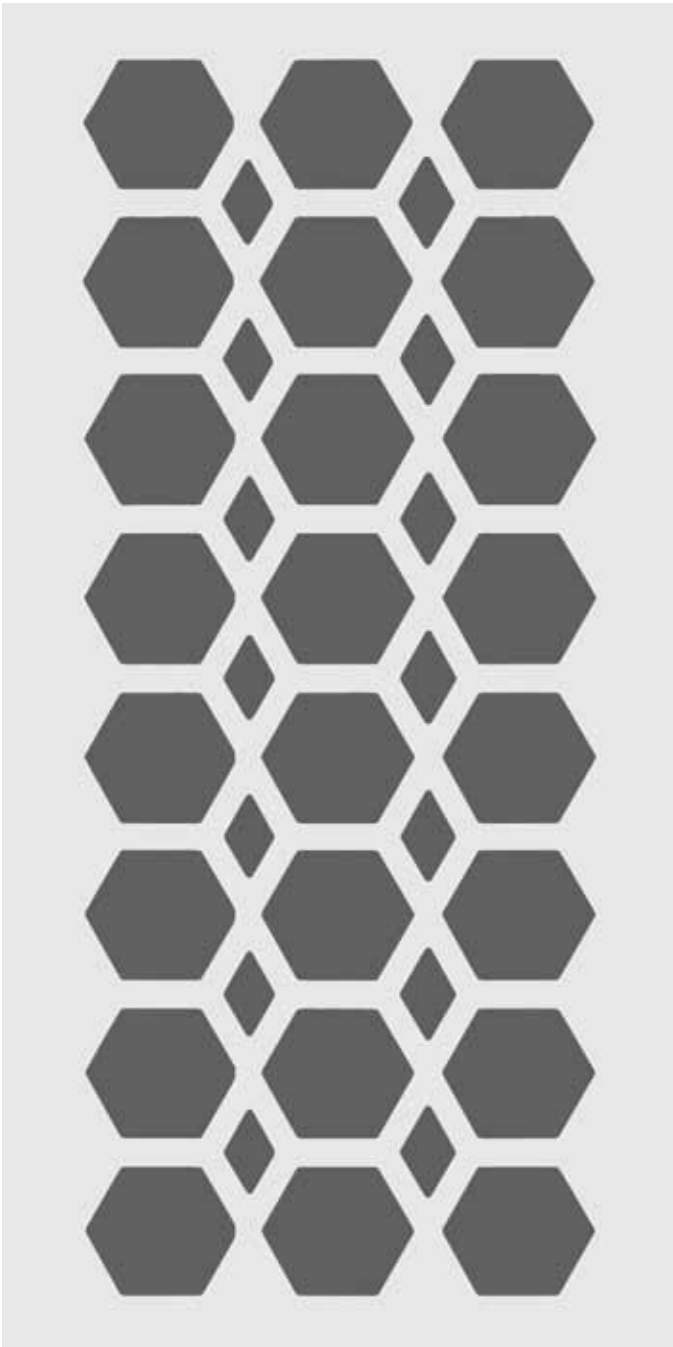
PATTERN DEPTH: THRU CUT  
MAXIMUM CORE THICKNESS: 3/4"  
PATTERN REPEATING TYPE: 4'X8'



Designer: Soelberg Industries Design Studios  
Photographer: Christie Soelberg  
Location: Soelberg Industries, Orem, UT  
Pattern: Lamella  
Finish: High gloss clear coat

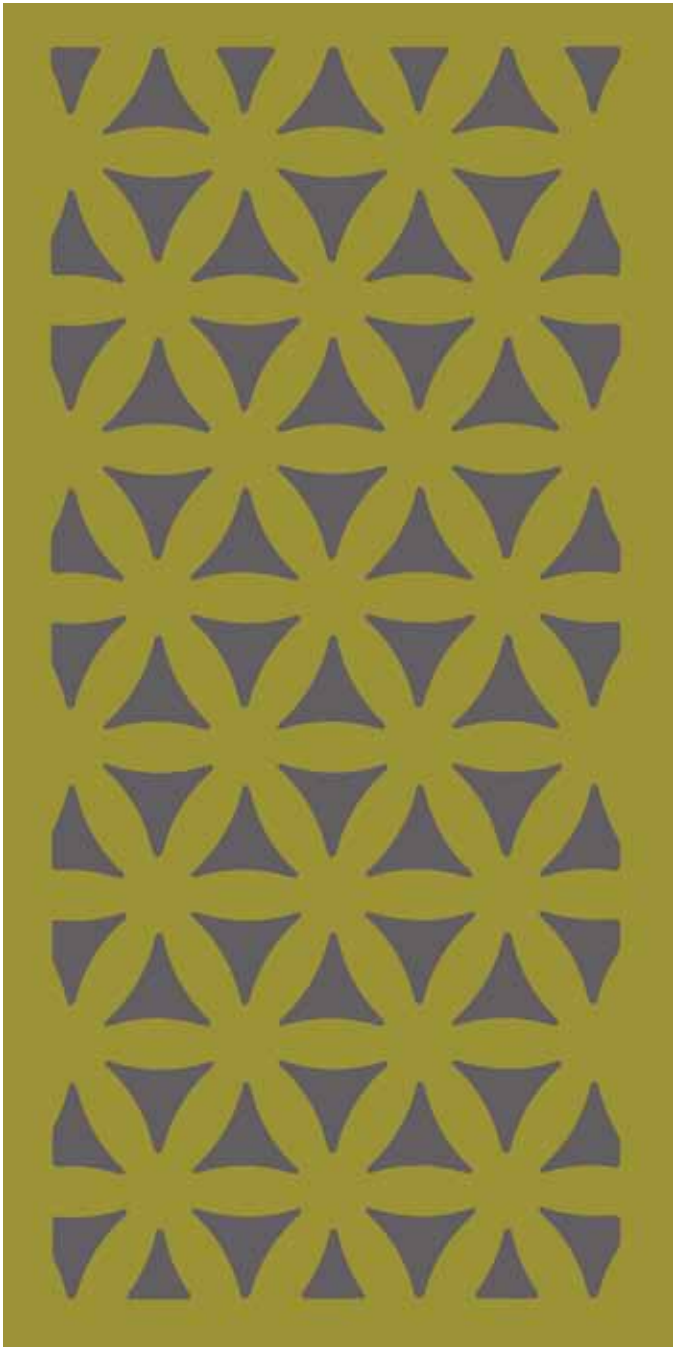


DIVIDERS  
ALVEARE



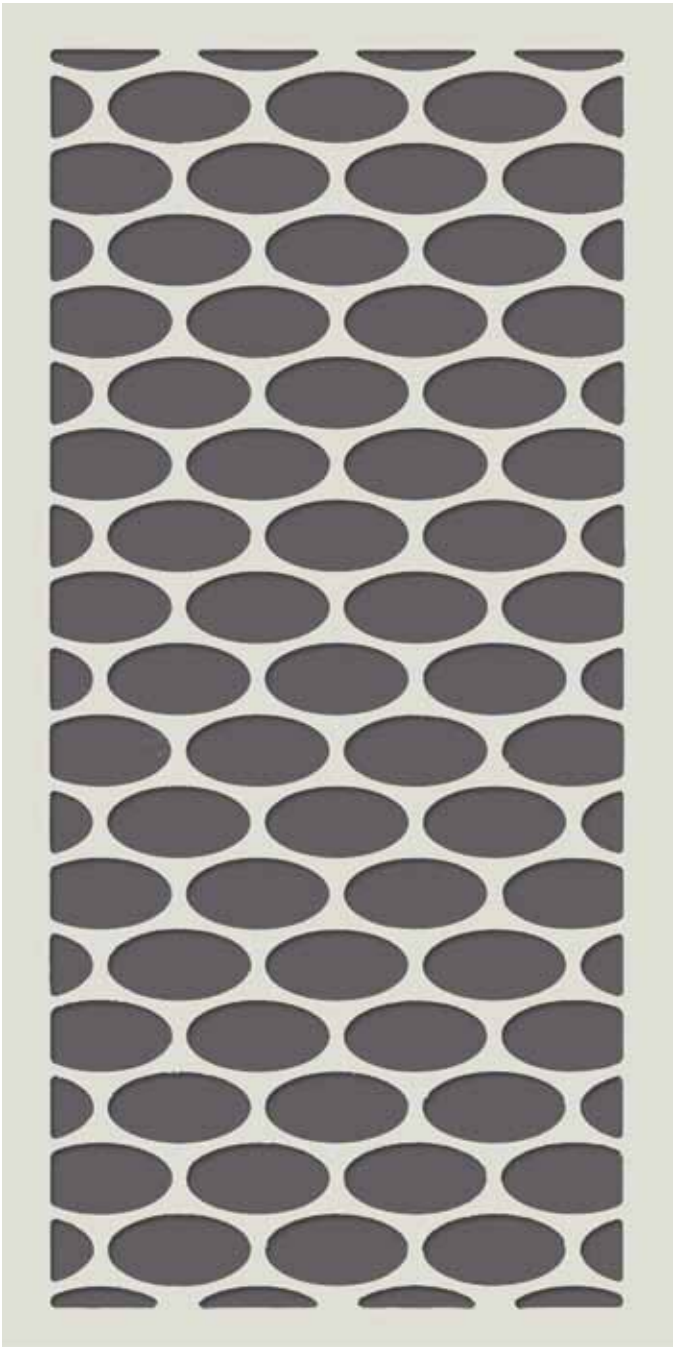
PATTERN DEPTH: THRU CUT  
MAXIMUM CORE THICKNESS: 3/4"  
PATTERN REPEATING TYPE: 4'X8'  
FINISH OPTIONS: PAINT-GRADE ONLY

DIVIDERS  
ANGOLI



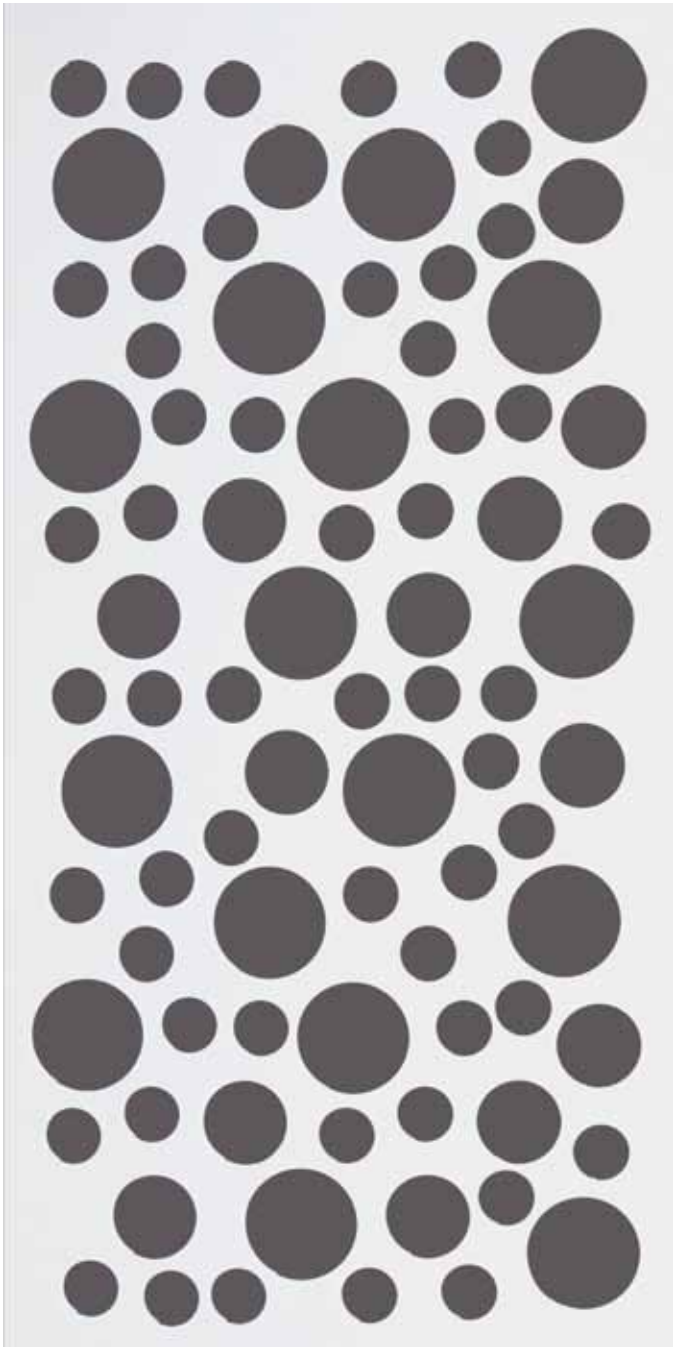
PATTERN DEPTH: THRU CUT  
MAXIMUM CORE THICKNESS: 3/4"  
PATTERN REPEATING TYPE: 4'X8'  
FINISH OPTIONS: PAINT-GRADE ONLY

DIVIDERS  
BICCHIERE



PATTERN DEPTH: THRU CUT  
MAXIMUM CORE THICKNESS: 3/4"  
PATTERN REPEATING TYPE: 4'X8'  
FINISH OPTIONS: PAINT-GRADE ONLY

DIVIDERS  
PORTALI



PATTERN DIRECTION: HORIZONTAL/VERTICAL  
PATTERN DEPTH: THRU CUT  
MAXIMUM CORE THICKNESS: 3/4"  
FINISH OPTIONS: PAINT-GRADE ONLY





Designer: Penny Dille  
Photographer: Christie Soelberg  
Location: DR Horton Design Center, Riverton, UT  
Finish: Zembrano

## SLAB PANEL SYSTEMS

slab [slab]

1. A thick slice; a broad, flat, dense piece of wood, MDF or architectural panel.



SLAB PANEL SPECIFICATIONS



- Materials:**
- 2 Standard thicknesses of MDF with melamine back available. (3/4” with white back, 1 1/8” with black back) Also, available in our NAUF and Class A fire rated cores.
  - Panel sizes are available in any size up to 4’X8’. (please note all laminates with a grain will run vertical with height over 4’.)

**Installation:**

The recommended installation method is factory supplied adhesive. Each piece comes labeled for location. Install from bottom using pre determined layout provided from the factory. It is important that the first line is installed on a level line.

**Lead Time:**

There is a 2 week lead time for standard sizes and finishes. Lead time subject to change for custom sizing and finishes.

**Finshes:**

The Slab Panels are available in all of our 3D laminate finishes. The options shown to the left are just a few of the many wood grains available. See the 3D Laminate Finishes (page 92) for more options. For the most up-to-date collection of finish options, visit [soelbergi.com](http://soelbergi.com). Online and catalog swatches may not be an exact match. Contact us to request a swatch sample for accurate color. Please note all laminates with a grain will run vertical with height over 4’.



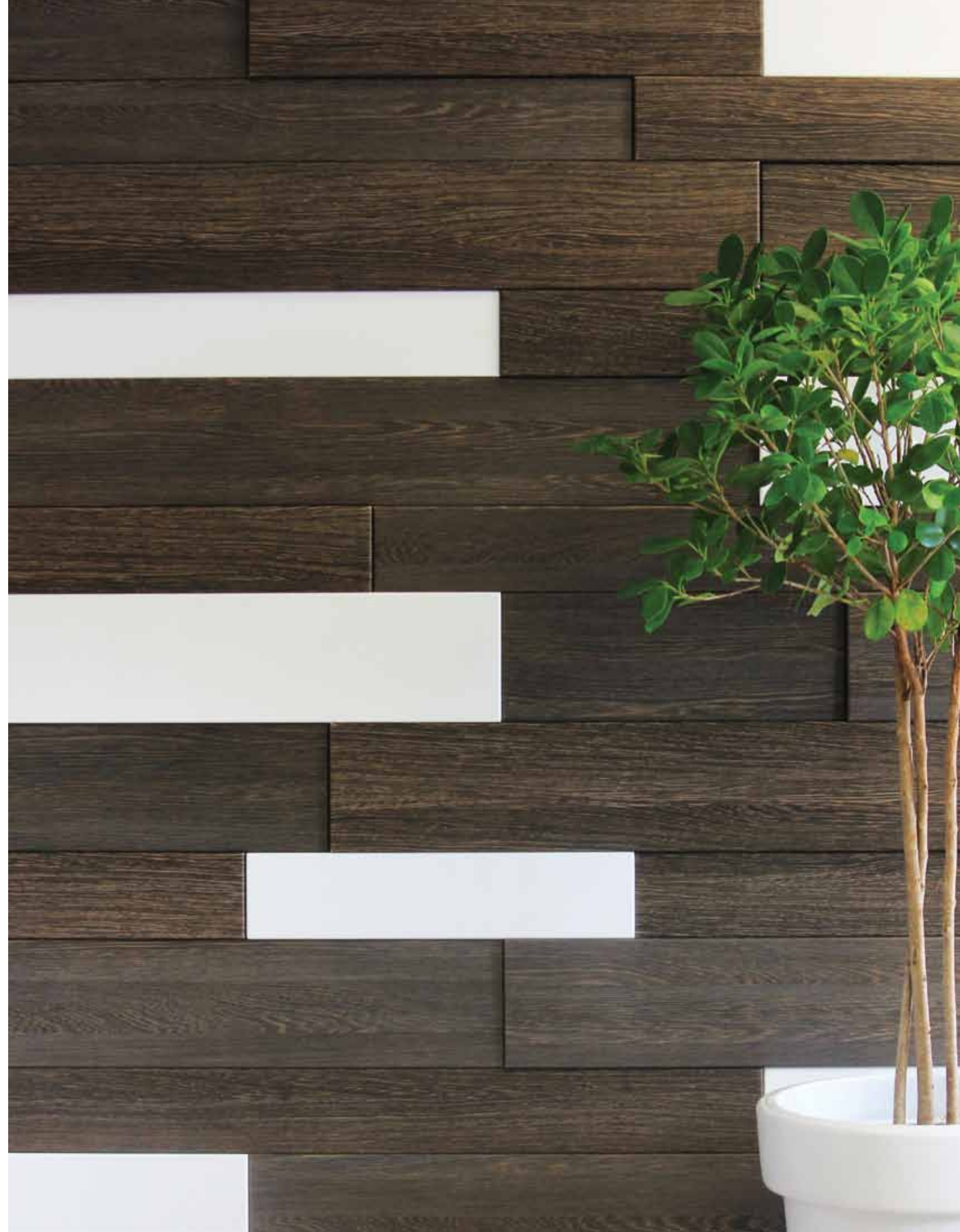
Designer: Penny Dille  
Photographer: Christie Soelberg  
Location: DR Horton Design Center, Riverton, UT  
Finish: Zembrano



# MATRIX SYSTEM

ma•trix ['meɪ triks]

1. A form created from individual components in such a way that the outcome is more substantial in strength and visual appeal than the original parts.







Design Firm: Christie Lewis Interiors  
 Photographer: Christie Soelberg  
 Location: Nate Lewis DDS, Sandy, UT  
 Pattern: Piastra  
 Finish: Boardwalk and Mali Wenge, Beachwood

## MATRIX PIASTRA



### Materials:

- 2 Standard thicknesses of MDF Premium Class C with a melamine back (3/4" with white back, 1 1/8" with black back) Also, available in our NAUF and Class A fire rated cores.
- 2 Standard heights of MDF Premium Class C (4", 6")
- 5 Standard lengths of MDF Premium Class C (12", 18", 24", 30", and 36")
- Available in any of our standard 3D laminate finishes or combination of finishes to create greater contrast and variation.

### Installation:

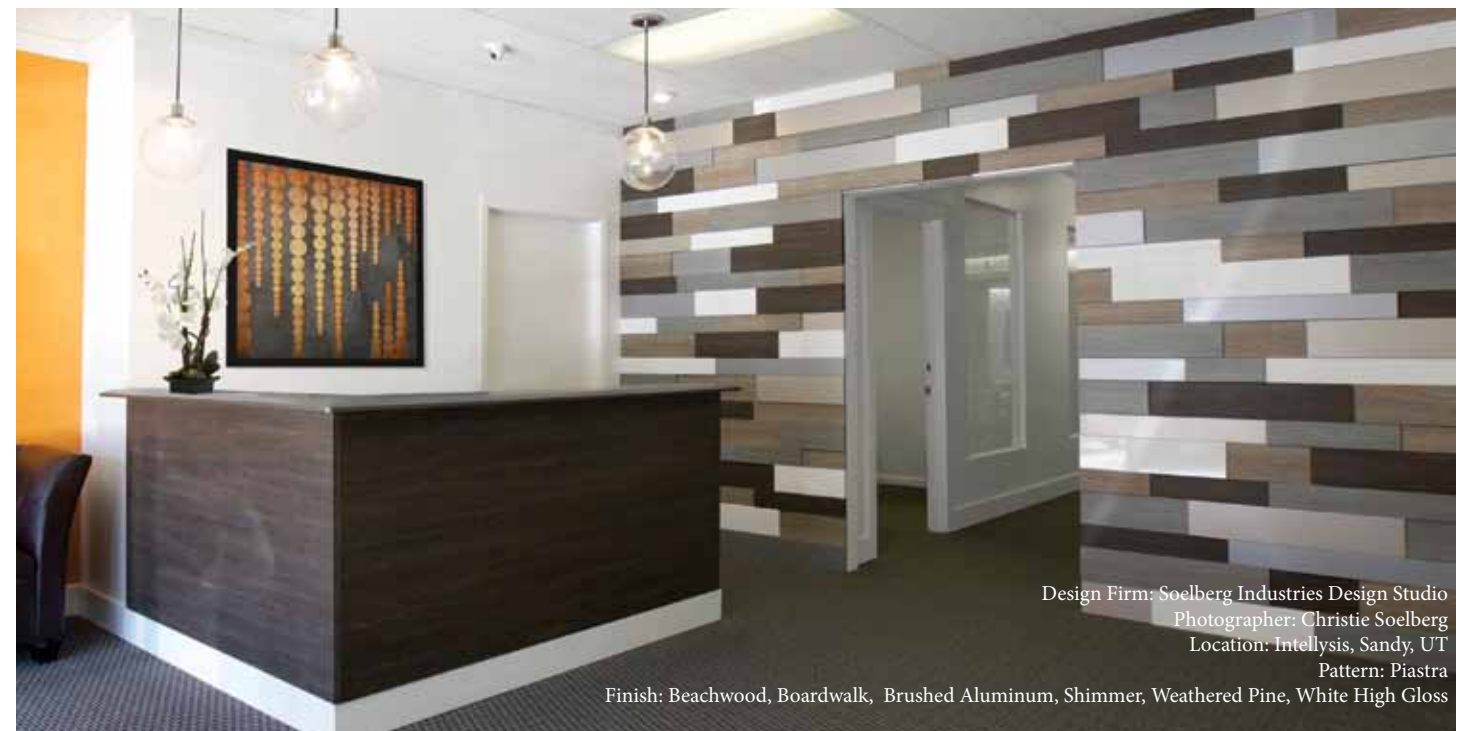
The recommended installation method is factory supplied adhesive. Each piece comes labeled for location. Install from bottom using pre determined layout provided from the factory. It is important that the first line is installed on a level line.

### Lead Time:

There is a 2 week lead time for standard sizes and finishes. Lead time subject to change for custom sizing and finishes.



Design Firm: Soelberg Industries Design Studio  
 Photographer: Christie Soelberg  
 Location: Residential, Cedar Hills, UT  
 Pattern: Piastra  
 Finish: Weathered Pine



Design Firm: Soelberg Industries Design Studio  
 Photographer: Christie Soelberg  
 Location: Intellysis, Sandy, UT  
 Pattern: Piastra  
 Finish: Beachwood, Boardwalk, Brushed Aluminum, Shimmer, Weathered Pine, White High Gloss



FURNITURE







## TEXTURED BENCHES

Sit down, relax and be inspired by Textured Benches by Soelberg Industries. Ideal to create a place of gathering in your lobby, breakroom, cafe or living space. Textured Benches serve multiple purposes, from seating to storage or simply to add another layer of texture and design.

Textured Bench cases are constructed using high quality MDF core and 3D laminate surfacing. Textured faces are manufactured using MDF or baltic birch core depending on the texture chosen. Each bench comes assembled with 1” height adjustable glides for leveling. We offer a variety of textures and finishes to make your bench uniquely yours.



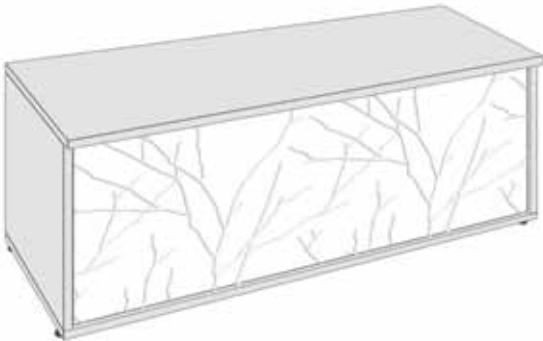
Texture Pattern: Natura Carta  
Case Finish: White



TEXTURED BENCHES - STYLES

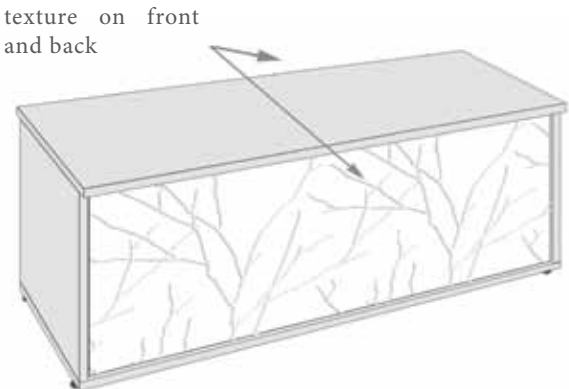
TEXTURED BENCH ONE

This style has a fixed top and is just for seating. There is texture on just the front of this model. The back side of this model matches the sides and, k, top.



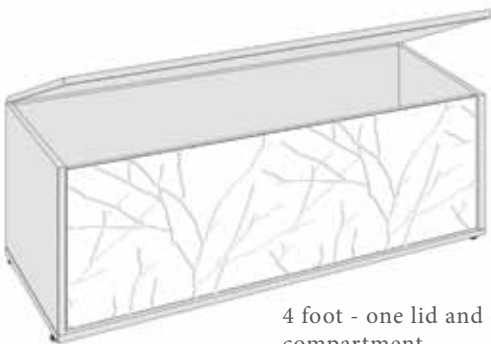
TEXTURED BENCH TWO

This style has a fixed top and is just for seating. There is texture on the front and back side of this model. It is ideal for open seating where the bench can be approached from all sides.

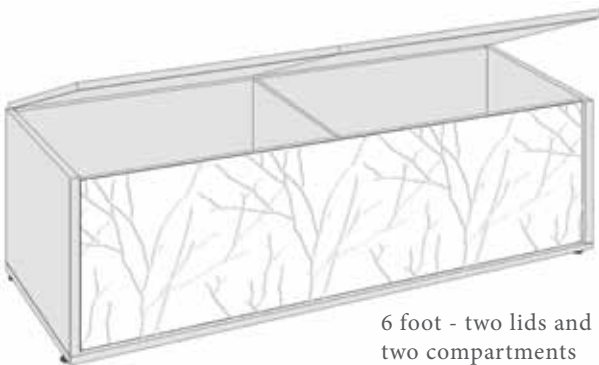


TEXTURED STORAGE BENCH

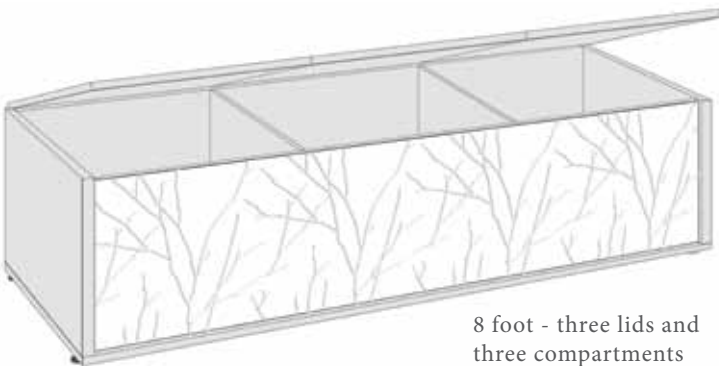
This bench has a soft-close hinged top(s) to allow for storage inside of the bench. It also includes lid-stay hardware to allow for easy accessibility to stored items. This style has texture on just the front of the bench.



4 foot - one lid and one compartment



6 foot - two lids and two compartments



8 foot - three lids and three compartments

BENCH HARDWARE



BENCH CASE FINISH OPTIONS

Textured Bench cases are available in eight different finishes.

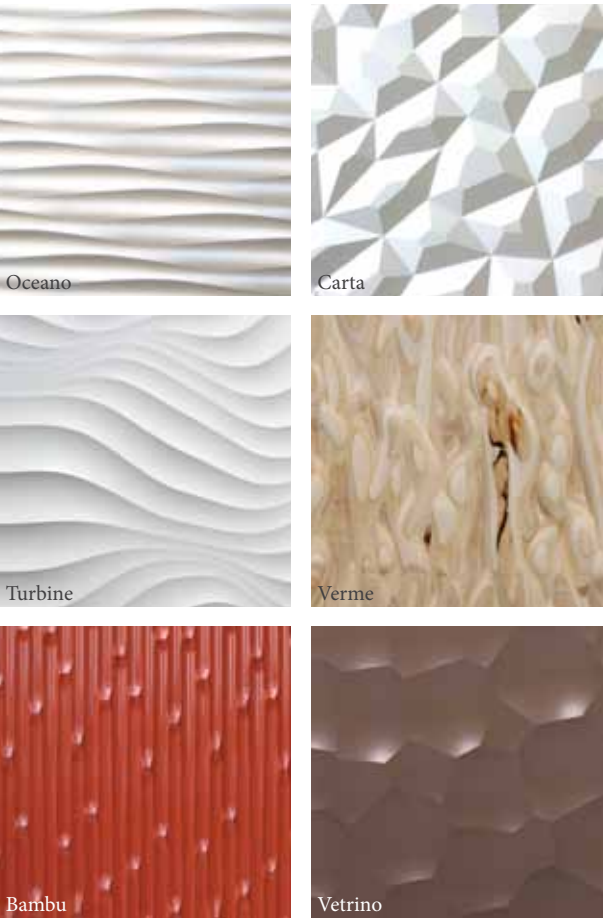


Texture Pattern: Scalpello  
Texture Finish: White  
Case Finish: Boardwalk

TEXTURE PATTERN OPTIONS

Textured Benches are available in all of our texture patterns, including our Natura collection. The following patterns are just a sample of what we offer.

For a complete catalog of patterns, visit [soelbergi.com](http://soelbergi.com).



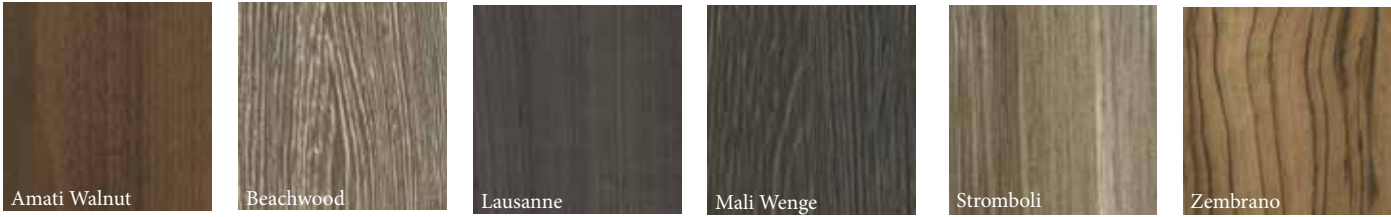
Texture Pattern: Scalpello  
Texture Finish: Glacier White  
Case Finish: Boardwalk



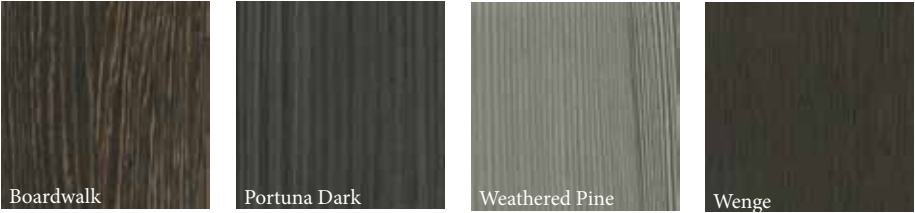
TEXTURE PATTERN FINISH OPTIONS

Bench textures are available in all of our finish options. The following finishes are just a sample of what we have available. For a complete catalog of finishes, see the 3D Laminate Finishes page or visit [soelbergi.com](http://soelbergi.com).

wood grains



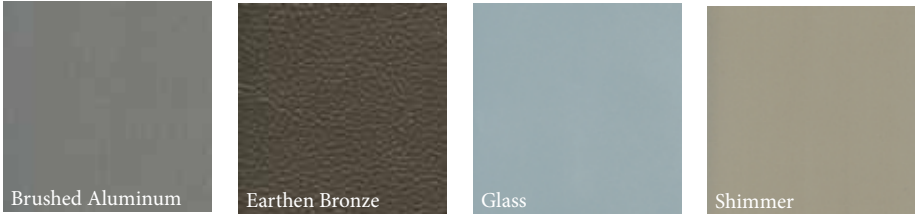
textured wood grains



solids



metallics



TEXTURE BENCH SIZES

TEXTURED BENCH ONE

**4 Foot**  
48” wide  
16”height  
17” deep

**6 Foot**  
72” wide  
16” height  
17” deep

**8 Foot**  
96” wide  
16” height  
17” deep

TEXTURED BENCH TWO

**4 Foot**  
48” wide  
16” height  
18” deep

**6 Foot**  
72” wide  
16” height  
18” deep

**8 Foot**  
96” wide  
16” height  
18” deep

TEXTURED STORAGE BENCH

**4 Foot**  
48” wide  
16”height  
17” deep

**6 Foot**  
72” wide  
16” height  
17” deep

**8 Foot**  
96” wide  
16” height  
17” deep







## TABLES

### BREAKROOM, RESTAURANT AND BAR TABLES

Our tables are the perfect solution for your breakroom, restaurant, sitting area, or bar. They are designed for continuous use and can hold up to the wear and tear of public or high traffic spaces. With many sizes, shapes and finishes to choose from, you can custom build your tables to compliment the design of your space.





SURFACE FINISH

Our surfaces are available in the following finishes. Contact us to request a swatch sample for accurate color. If you do not see a finish that meets your needs, contact us. We can custom order additional finishes for a small up-charge.



Almond



Antique White



Amatti Walnut



Black



Blonde Maple



Boardwalk



Carbon Fiber



Cherry Blossom



Chocolate Pear



Clear Maple



Fashion Gray



Mali Wenge



White



Merapi



Rustic Cherry



Shark Gray



Stromboli



Venus Silver



Wenge



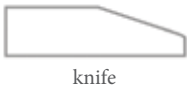
Zebra

SURFACE SIZES

Round diameter	24"	30"	36"	42"	48"
Square width	24"	30"	36"	42"	48"

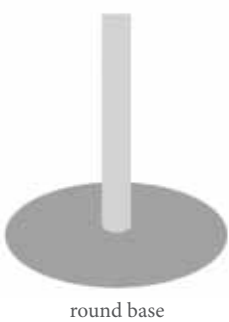
SURFACE EDGE PROFILE

The surface edge profile is available in two options; knife edge and ultra edge.



BASES

Our bases are made of steel and designed for durability and strength. They are available in either round shape or x-shape. Both styles are available in table height of 30" and cafe height of 42".





3D LAMINATE FINISHES



Amatti Walnut



Bamboo Light



Beachwood



Birds Eye Matte



Blonde Maple



Boardwalk



Candlelight



Cherry Blossom



Chocolate Pear



Jubilee Cherry



Lausanne



Mali Wenge



Merapi



Rustic Cherry



Shakura Cherry



Stromboli



Summerflame



Zebra



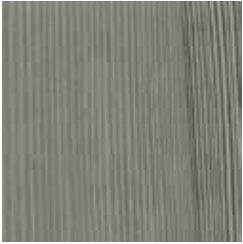
Zembrano



Portuna Dark



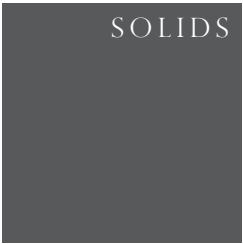
Portuna Light



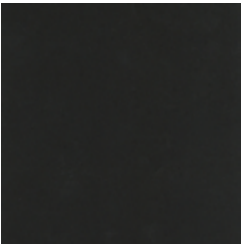
Weathered Pine



Wenge



Antique White



Black



Fashion Gray



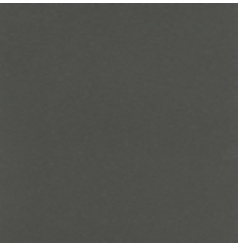
Frosty White



Glacier White



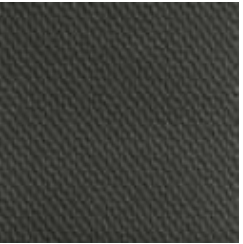
Matte White



Shark Gray



Brushed Aluminum



Carbon Fiber



Earthen Bronze



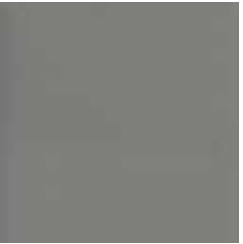
Elemental Silk



Glass



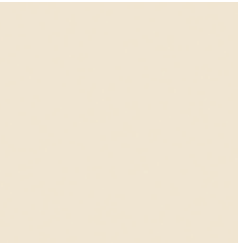
Shimmer



Venus Silver



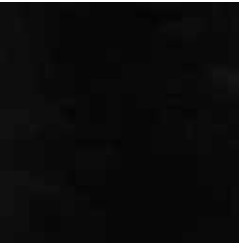
HG Aluma Red



HG Antique White



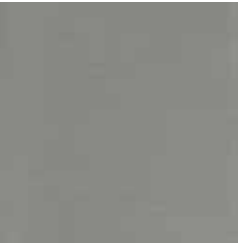
HG Birds Eye



HG Black



HG Black Birds Eye



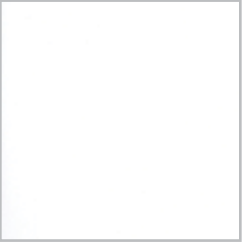
HG Brushed Steel



HG Red



HG Ruby Red



HG White

For the most up-to-date collection of finish options, visit [soelbergi.com](https://soelbergi.com). Online and catalog swatches may not be an exact match. Contact us to request a swatch sample for accurate color.



SOELBERG | INDUSTRIES  
[soelbergi.com](https://soelbergi.com)



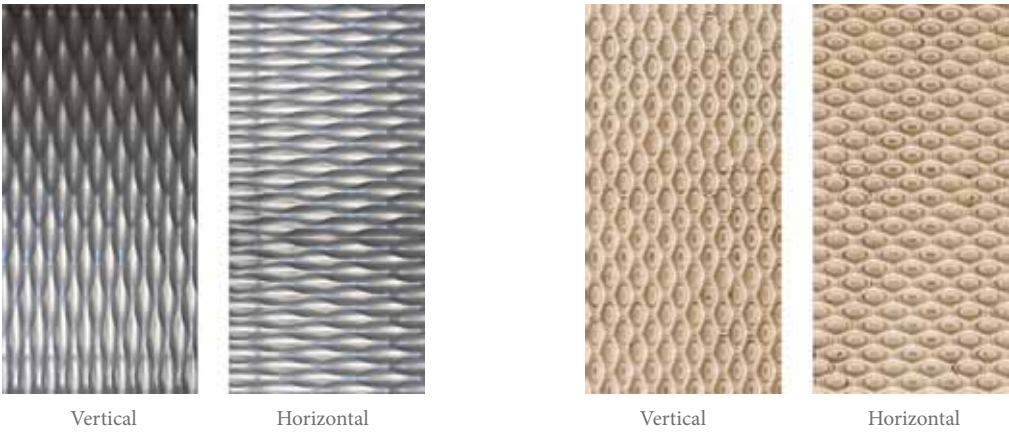
TEXTURED PANEL SYSTEM - HOW TO SPECIFY

Step 1: Select core.

- Premium MDF
- FF MDF
- Fire Rated/FF
- Baltic Birch Plywood - This core is for the Natura Collection only.

Step 2: Select pattern. For the most up-to-date collection of patterns, visit [soelbergi.com](http://soelbergi.com).

Step 3: Select pattern direction.



**Step 4: Select finish.** All of our textured panels, with the exception of the Natura Collection, are available in a Paint-Grade or 3D Laminate finish. Paint-Grade panels are shipped raw, ready for on-site finishing and should be painted by a professional. Online and catalog 3D Laminate finish swatches may not be an exact match, please contact us to request a sample for accurate color. The Natura Collection is offered as a raw wood product and should be stained or painted by a professional. Please note, Soelberg Industries does not provide painting of any of our products.

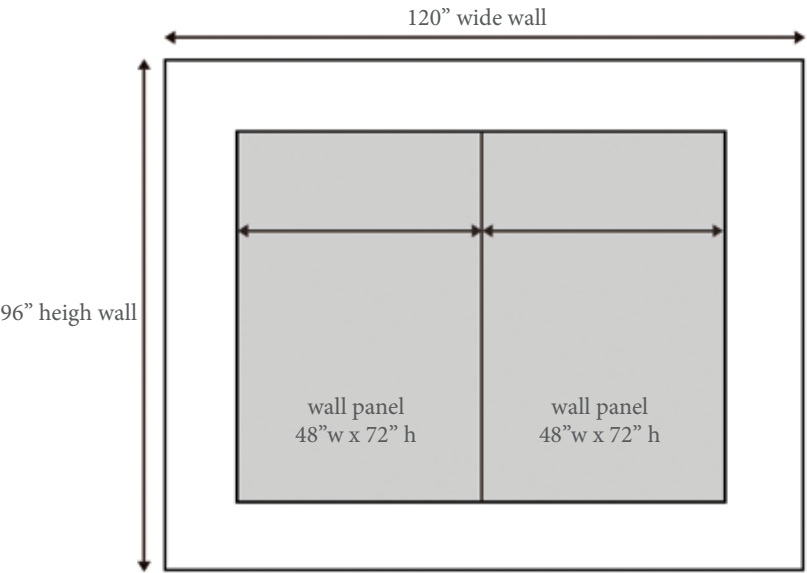
**Step 5: Choose installation method.** The most common installation methods are z-clip, point support (stand offs), construction mastic (adhesive), and direct screw (paint-grade only). Recommended installation methods vary by project. For more information on installation methods and hardware for your specific project, contact Soelberg Industries or your Soelberg Account Executive.

Step 6: Measure size of project in inches. (Provide cad drawing when available.) See examples on next page.

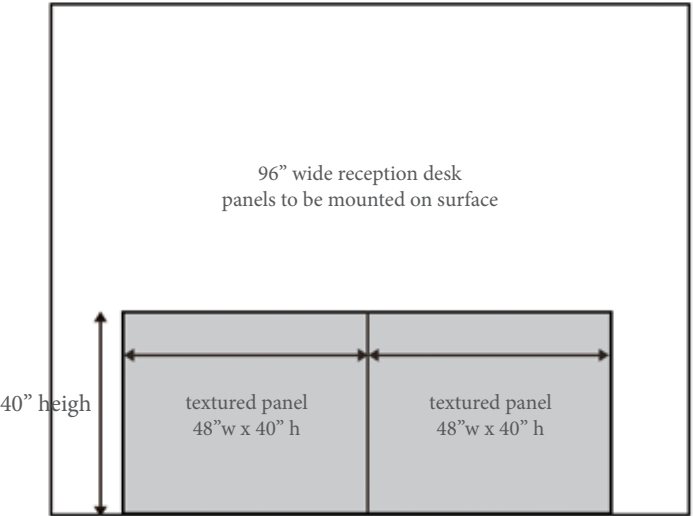
Step 7: Provide your Soelberg Account Executive with the information from step 1-6, project name, and delivery address.

Step 8: Your Soelberg Account Executive will send you a written quote from the information you provided. After you return the signed copy of the order and submit a deposit, your order will be sent to production.

Example for measuring #1



Example for measuring #2



SOELBERG | INDUSTRIES  
[soelbergi.com](http://soelbergi.com)



SOELBERG | INDUSTRIES  
[soelbergi.com](http://soelbergi.com)



DIVIDER SYSTEM - HOW TO SPECIFY

Step 1: Select MDF core.

- Premium MDF
- FF MDF
- Fire rated/FF

Step 2: Select pattern. Please note, not all patterns for dividers are available in a 3D laminate and have a paint-grade option only. For the most up-to-date collection of patterns, visit [soelbergi.com](http://soelbergi.com).

Step 3: Select back finish.

- **White Melamine Backing** - Recommended to be used when dividers are being used as texture or wall art and backside will not be visible.
- **RAW backing/paint-grade** - Recommended to be used when dividers are being used to divide spaces and will be visible from both sides.

Step 4: Select finish. All Divider Panels are available in a paint-grade finish. Paint-grade panels are shipped raw, ready for on-site finishing and should be painted by a professional. Select Dividers can be pressed with a 3D Laminate, please verify the pattern and its finish options in the catalog. Online and catalog 3D Laminate finish swatches may not be an exact match, please contact us to request a sample for accurate color.

Step 5: Choose installation method. The most common installation methods are z-clip, point support (stand offs), construction mastic (adhesive), and direct screw (paint-grade only). Recommended installation methods vary by project. For more information on installation methods for your specific project, contact Soelberg Industries or your Soelberg Account Executive.

Step 6: Either select standard sizing of a 4’x8’ divider dimension or provide measurements in inches for custom sizes. Please note, for customs sizes there is a flat programming upcharge. Provide cad drawing when available.

Step 7: Provide your Soelberg Account Executive with the information from step 1-6, project name, and delivery address.

Step 8: Your Soelberg Account Executive will send you a written quote from the information you provided. After you return the signed copy of the order and submit a deposit, your order will be sent to production.

EXAMPLES OF DIVIDER ORIENTATION



Vertical



Horizontal



SOELBERG | INDUSTRIES  
[soelbergi.com](http://soelbergi.com)



SOELBERG | INDUSTRIES  
[soelbergi.com](http://soelbergi.com)



LEED INFORMATION

LEED CATEGORY	INTENT	REQUIREMENTS	AVAILABLE CREDITS
MR 4. Materials & Resources: Recycled Content	Increase the use of building products that contain recycled content material.	Sum of post-consumer recycled content plus 1/2 of the pre-consumer recycled content constitutes at least 10% (1 point) or 20% (2 points) of materials in the project, based on cost.	1-2 points
MR 5. Materials & Resources: Regional Materials	Increase the use of building products that are extracted and manufactured within the project region	Use of building materials that have been extracted, harvested or recovered, and manufactured within 500 miles of the project site; a minimum of 10% (1 point) or 20% (2 points), based on cost, of the total materials value.	1-2 points
MR 7. Materials & Resources: Certified Wood	Encourage environmentally responsible forest management	A minimum of 50% of woodbased products certified to Forest Stewardship Council (FSC) for wood building components.	1 point
IEQ 4.4 Indoor Environmental Quality: Low Emitting Materials	Improve indoor air quality	Composite wood products must contain no added urea formaldehyde resins	1 point

Soelberg Industries’ products may qualify for up to 6 LEED points depending on location of project and core material selected. Standard cores qualify for LEED 4.1 and 4.2. Additionally, if the project is within 500 miles of 84058 or 40743, LEED 5.1 and 5.2 are also available.



SOELBERG | INDUSTRIES  
soelbergi.com

GREEN INITIATIVE - MATERIALS USED IN 3D MANUFACTURING

Soelberg Industries feels it is important not only to create durable, high-quality products but to ensure that every piece of material we manufacture is safe for the environment and meets the highest standards of indoor air quality. That’s why we use MDF that consists of 100% recycled/reclaimed wood products and use only water-based adhesives in all our products. Because of our commitment to the environment, we use products from mills certified to the Composite Panel Association’s Environmentally Preferable Product standards and our products can qualify for up to 6 of the U.S. Green Building Council’s LEED credits.

Soelberg Industries recycles their scrap from the manufacturing process. Our wood waste is sent to both a sewer treatment facility and dairy farms to be mixed with human and animal waste and turned into compost for gardening and farming. Our 3D laminate waste is baled and recycled into other plastic products.

When you specify Soelberg Industries’ products for you construction and design projects, you’re helping to create a greener world.

3D Thermoplastic Laminates mainly consist of:

- Stabilizers
- Minimal percentages of plasticizers (No DEHP)
- No formaldehyde, cadmium, lead, mercury or chromium composites, azo dyes, or lead-containing pigments are used.

Medium Density Fiberboard (MDF)

MDF is a wood-based substrate consisting of fine soft and/or hardwood fibers that blend in vertical and horizontal directions. The surface is sanded and polished on both sides during manufacture and is melamine-coated on one side. We offer three MDF options:

Premium MDF

The medium density fiberboard product of choice when looking for optimal quality, consistency in the most demanding of applications. Our Premium MDF has a uniform density profile that offers a stable core and surface making it ideal for routed doors, for printing and laminating, as well as surface and edge-machining applications.

FF MDF

Our FF MDF is produced using a no added urea-formaldehyde resin process and 100% recycled and/or recovered wood material. This EPP (Environmentally Preferable Product) certified MDF qualifies for no added U-F resin project requirements and may contribute to LEED points.

Fire Rated / FF

When you need a fire-rated no added urea-formaldehyde resin MDF for paneling, cabinetry, shelving, trims and furniture, our Fire Rated Formaldehyde Free MDF is the best in class. This UL approved, Class A/Class 1 fire-rated panel is ideal for interior, non-structural use in public areas such as schools, hotels, and restaurants. The design flexibility and working ability make it an ideal choice for a variety of applications.

Adhesives

Polyurethane Dispersion (PUD) adhesives are water-based and are available in 2 different forms; two-component reactive products with crosslinker added separately and single-component with integrated crosslinker.



SOELBERG | INDUSTRIES  
soelbergi.com



TERMS AND CONDITIONS

Pricing and Payment

Pricing is guaranteed for 30 days from date of the quotation. Pricing does not include installation and installation hardware costs, and applicable taxes. Pricing is guaranteed for 30 days from the date of quotation.

Terms

50% deposit upon submittal of order and balance including shipping charges due when order is complete and before order is shipped. Payment options include check, MasterCard, American Express, Visa or electronic transfer.

Orders and Acknowledgments

All orders must be submitted in writing and include complete information necessary to process the order. Order confirmations will be submitted within 24 hours and will be assigned a ship date. All order confirmations must be approved and returned within 24 hours to secure scheduled ship date. Any changes to confirmation may result in extending the scheduled ship date. Orders can be submitted by email at orders@soelbergi.com or faxed to (801) 431-0559.

Changes and Cancellations

Upon receipt of the confirmation and deposit, no changes are accepted to your order unless to increase quantity. Increasing quantity will result in an extended ship date. The deposit is non-refundable even if order is cancelled.

Shipping

Soelberg Industries makes every effort to ensure that your product arrives to you in optimal condition by packaging and palleting your products to protect them during transit. Unfortunately, sometimes damage does occur in transit. Please follow these instructions in order to resolve any problems caused by damaged products so a freight claim may be processed to protect you.

- 1. It is your responsibility to inspect your crate with the driver present.
- 2. When you sign the delivery ticket, you confirm that the product is in satisfactory condition. If this is not the case, it is your responsibility to report the damages to the driver and mark the delivery confirmation as “damaged” before signing.
- 3. You must document the damaged packaging and damaged product to provide to the carrier for their freight claim department.
- 4. You must take photos.
- 5. Please contact a Soelberg Industries representative immediately for assistance.

The driver is required to remain with you until you have adequately inspected your product. Failure to provide proper notification and documentation at the time of delivery may result in refusal by carrier to accept charges for any damage. Soelberg Industries is not responsible for any damage that occurs during transit.

Storage

Soelberg Industries reserves the right to assess charges for storage if product is kept past the proposed ship date.

Product Specifications

Soelberg Industries reserves the right to change or modify specifications on products at any time, without notice. Soelberg Industries also reserves the right to discontinue production of products, materials, finishes, and accessories at any time without notice.

Warranty

Soelberg Industries warrants to the original Customer that the Products it manufactures are free of defects in craftsmanship and materials found during a normal working environment for five years. Soelberg Industries shall, upon prompt written notice repair or replace, at its option and costs, the affected part or parts. All separate component parts not manufactured by Soelberg Industries shall be covered by the original manufacturer’s warranty. This warranty does not apply to; damage caused by a carrier, normal wear and tear, defects caused by improper installation, or other third party materials applied to the products, or products subjected to improper use and conditions, damage resulting from misuse, negligence, accident or alterations. Governing Law; Venue, etc. This agreement shall be governed by and construed in accordance with the laws of the State of Utah. Moreover, the parties agree and stipulate that the courts of Utah Count, Utah shall have exclusive jurisdiction and venue for all matters related to or arising out of this agreement.



SOELBERG | INDUSTRIES  
soelbergi.com



Design Firm: Pure Design  
Pattern: Roboante  
Finish: Black





SOELBERG | INDUSTRIES  
soelbergi.com