

MUTO DRITTO

acoustic ceiling tile solutions

 SOELBERG

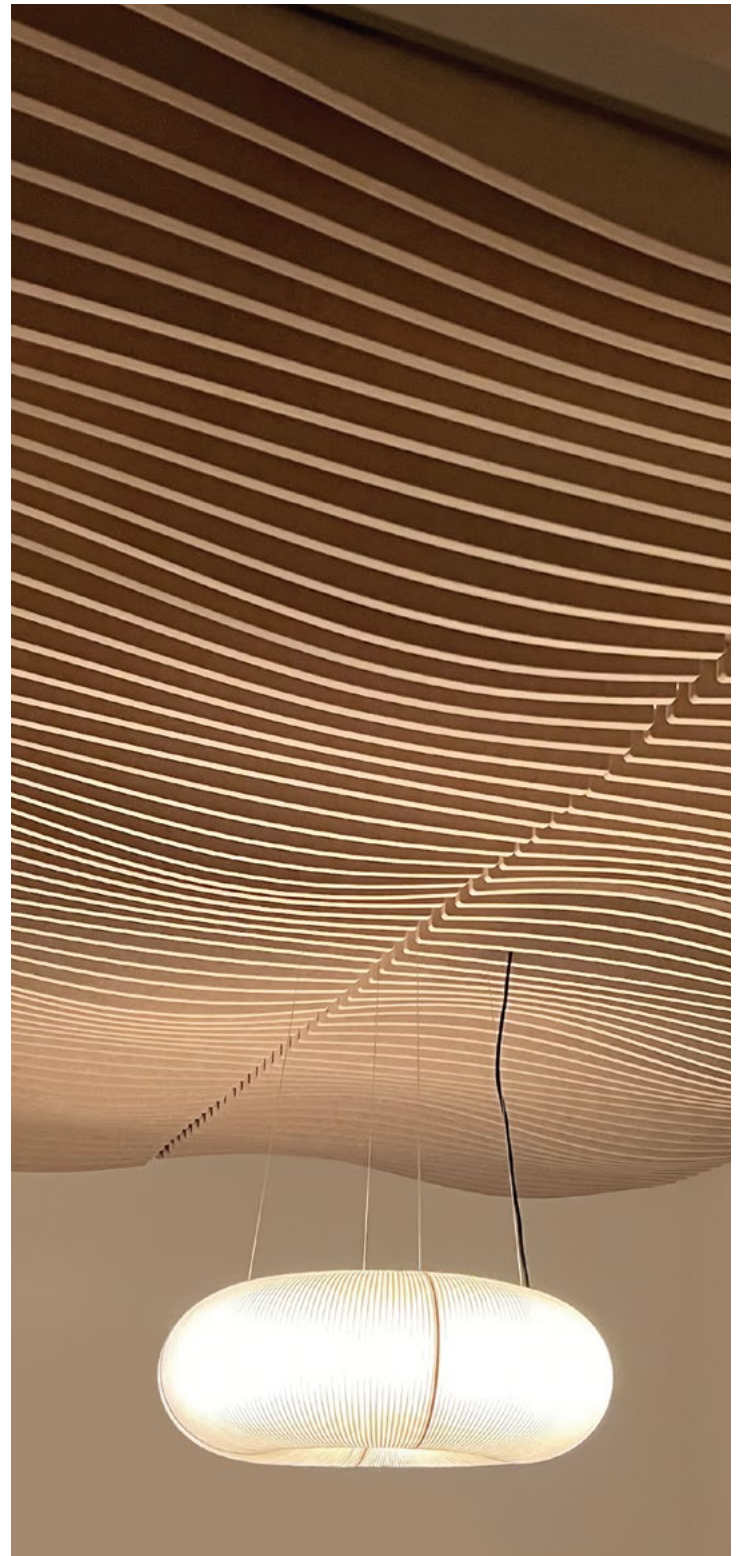
MUTO DRITTO

acoustic ceiling tile solutions

We make it easy to choose the right solution for your ceiling with three pattern profiles from straight waves to rounded waves and angled waves in three tile options. Select horizontal or vertical baffles and explore color combinations with 21 standard colorways. Easy installation with no needed hardware and our two week lead time make Dritto a simple ceiling solution for every interior.

SPECIFICATION

| | |
|-----------------------|--|
| CONTENT | 100% POLYESTER (PET) FELT |
| CORE THICKNESS | 1/2" (12MM) |
| PATTERN | DRICTO 01 (2x2) DRICTO 01H (2x4) DRICTO 01V (2x4) DRICTO 02 (2x2) DRICTO 02H (2x4) DRICTO 02V (2x4) DRICTO 03 (2x2) DRICTO 03H (2x4) DRICTO 03V (2x2) |
| TILE SIZE | 24" x 24" OR 24" x 48" (NOMINAL) |
| COLORWAYS | 27 STANDARD SOLID COLORS |
| WEIGHT | 3 LBS EACH (2x2) 6 LBS EACH (2x4) |
| ACOUSTICS | 0.55 NRC |
| FIRE RATING | CLASS A ASTM - E84 |
| ENVIRONMENTAL | DELICARE, MINDFUL MATERIALS & GREENGUARD GOLD CERTIFIED. MUTO IS PRODUCED FROM 100% RECYCLABLE PET FELT WITH A MINIMUM OF 60% PRE-CONSUMER RECYCLED CONTENT. |
| COLORFASTNESS | IN ACCORDANCE WITH ATCC 16.3 OPTION 3 THE COLOR CHANGE TO LIGHT AT 20 AFU WAS 4.5. |
| FINISH | MATTE |
| APPLICATION | INDOOR USE ONLY |
| LEAD TIME | 2 - 4 WEEKS |
| WARRANTY | 2 YEARS |



TOLERANCE & MAINTENANCE

PET core is a soft fibrous material. All dimensions and squareness are subject to +/- 1/16" tolerance.

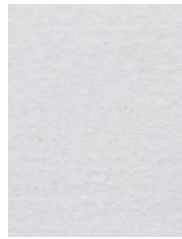
Vacuum to remove dirt and dust. Remove spills or spots immediately using a clean damp cloth. Carpet and fabric cleaners can also be used to clean. (Always test an inconspicuous area first.) Compressed air may be used to dust in difficult or hard-to-reach areas.

To disinfect, bleach can be used in accordance with CDC Cleaning & Disinfection instructions. The solution ratio is 5 tablespoons of bleach to 1 gallon of water | 4 teaspoons of bleach to 1 quart of water. Apply solution by spray and wipe off immediately. (Always test in an inconspicuous area first.)

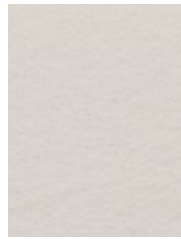
COLOR

MATTE COLOR

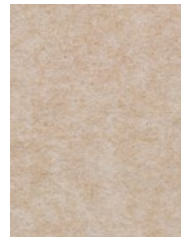
27 STANDARD COLORS
CUSTOM PRINT COLORS AVAILABLE
(CONTACT YOUR LOCAL SALES REP)
100% RECYCLABLE PET FELT



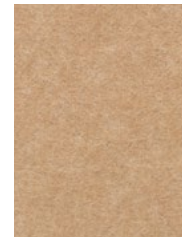
WHITE



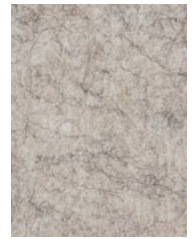
BONE



OATMEAL



CAMEL



SAND

TOLERANCES

PET felt is made from 100% recyclable polyester plastic. Slight and consistent variations in color, depth, density, and texture are inherent to this core material and should be expected. Color, density and texture will vary by dye lot. MUTO is made with a 'felling' process which results in a textural heathered effect where the fibers consist of multiple tones and shades.



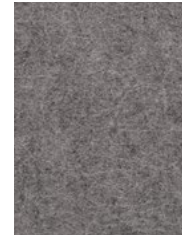
CASHMERE



FOG



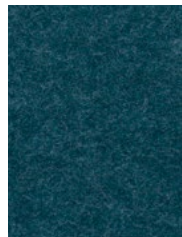
LAMB'S EAR



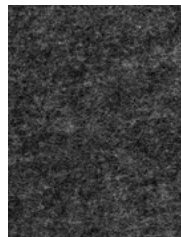
PEWTER



NORDIC KNIT



WINTER WATER



GRAPHITE



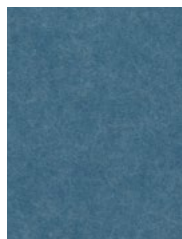
BLACK



MIDNIGHT



BLUEBERRY



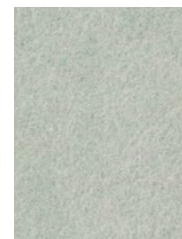
JUNIPER



SPLASH



STORM



SEAFOAM



SAGE



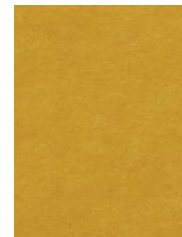
ARTICHOKE



LICHEN



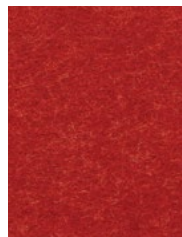
SUNSHINE



QUAKING ASPEN



CLEMENTINE



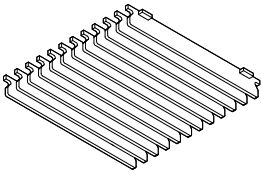
CHILI PEPPER



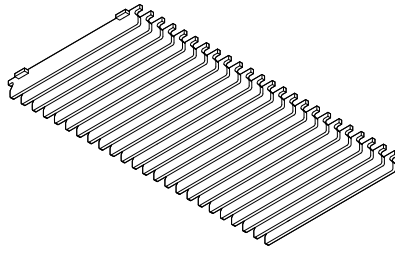
CURRANT

PATTERN | DRITTO 01 - 03

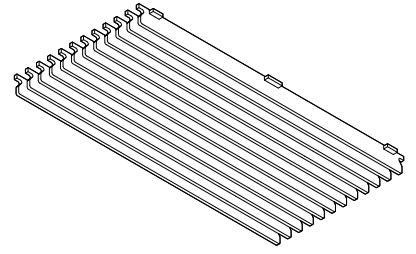
TILE PROFILES



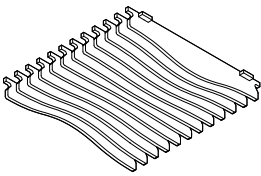
DRITTO 01 (2x2)



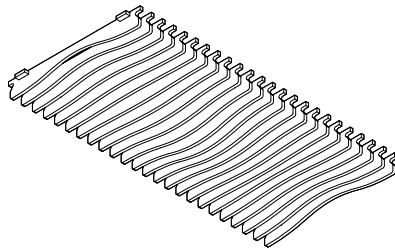
DRITTO 01H (2x4)



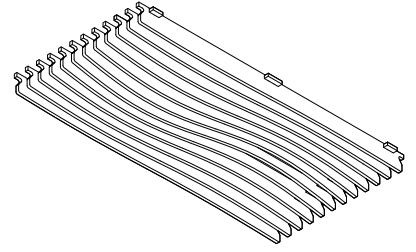
DRITTO 01V (2x4)



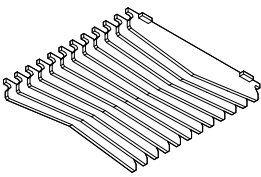
DRITTO 02 (2x2)



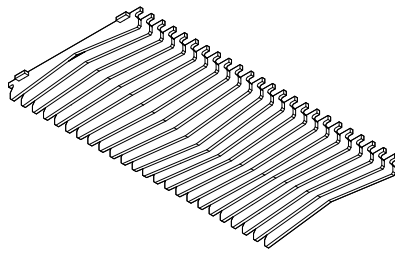
DRITTO 02H (2x4)



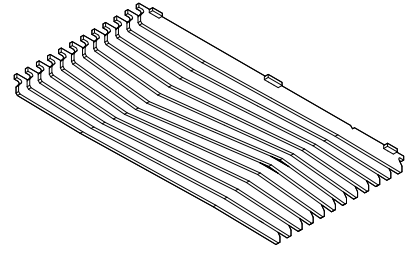
DRITTO 02V (2x4)



DRITTO 03 (2x2)



DRITTO 03H (2x4)



DRITTO 03V (2x4)

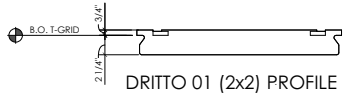
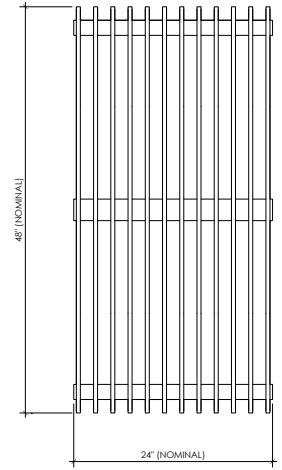
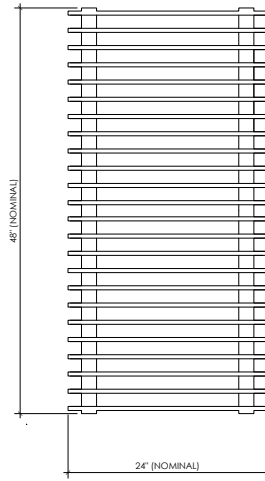
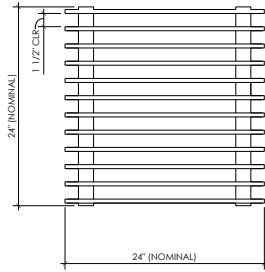


SIZE | DRITTO 01 - 03

TILE DIMENSIONS

DRITTO 01 - 03 (2x2) - 24" x 24" NOMINAL

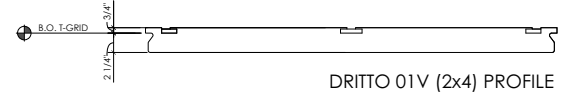
DRITTO 01 - 03 H & V (2x4) - 24" x 48" NOMINAL



DRITTO 01 (2x2) PROFILE



DRITTO 01H (2x4) PROFILE



DRITTO 01V (2x4) PROFILE



DRITTO 02 (2x2) PROFILE



DRITTO 02H (2x4) PROFILE



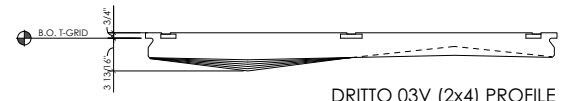
DRITTO 02V (2x4) PROFILE



DRITTO 03 (2x2) PROFILE

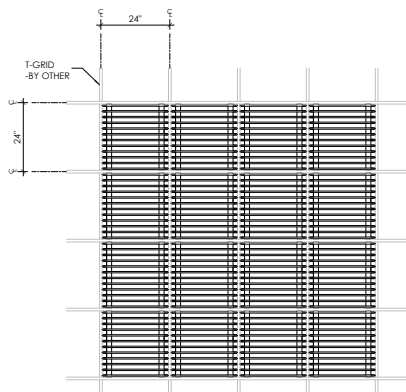


DRITTO 03H (2x4) PROFILE

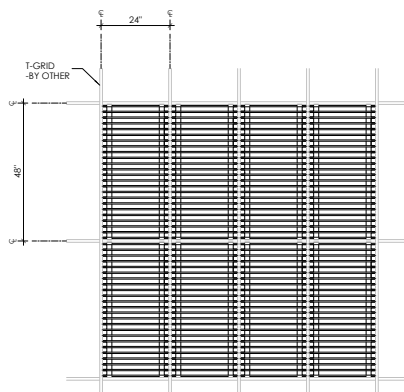


DRITTO 03V (2x4) PROFILE

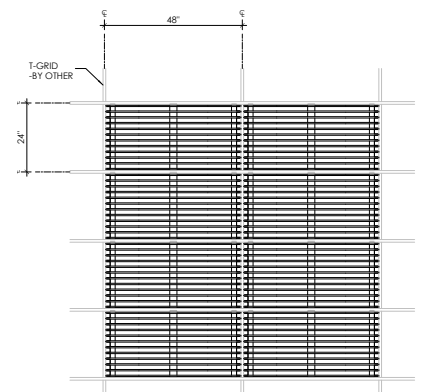
DRITTO 01- 03 DIMENSIONS



DRITTO 01- 03 (2x2)



DRITTO 01H - 03H (2x4)

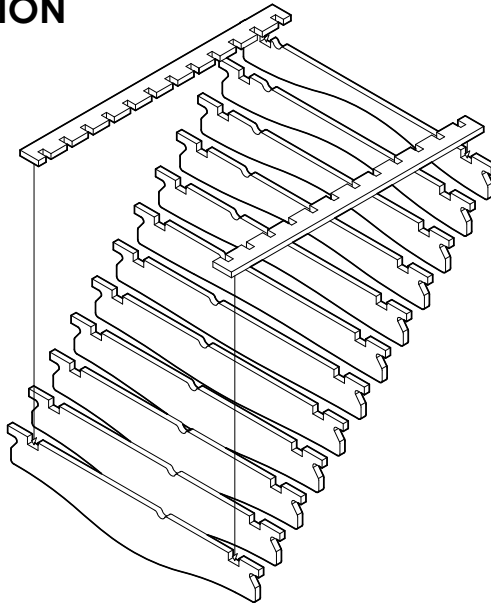


DRITTO 01V - 03V (2x4)

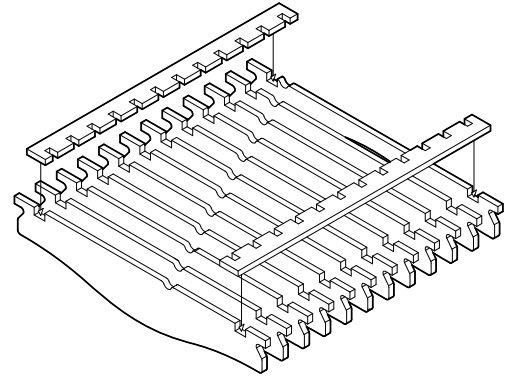
ASSEMBLY & INSTALLATION

NO HARDWARE NEEDED

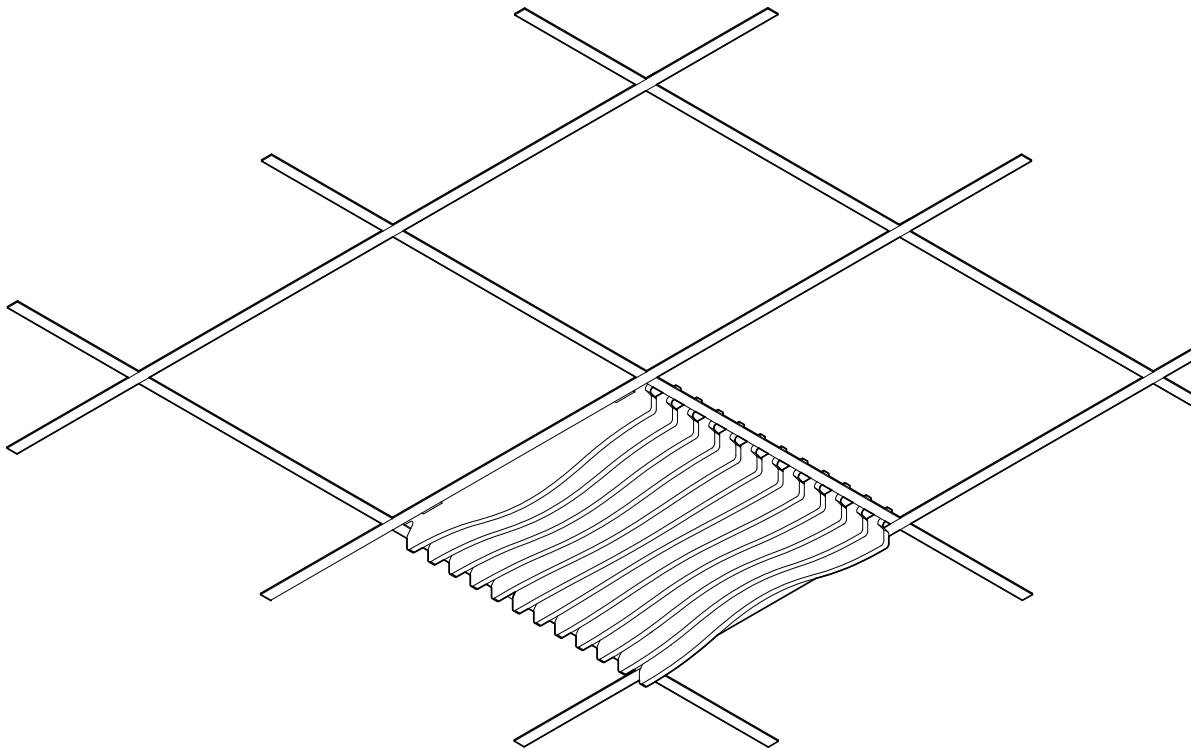
EACH DRITTO BAFFLE HAS A NOTCH ON THE BACK SIDE FOR EASY PATTERN CONTINUATION.



STEP ONE



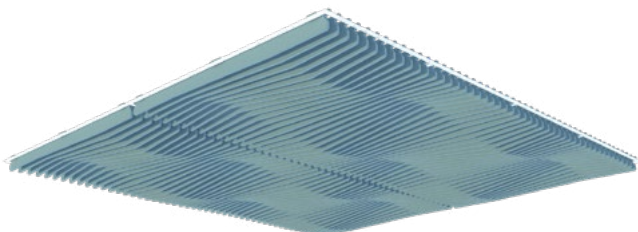
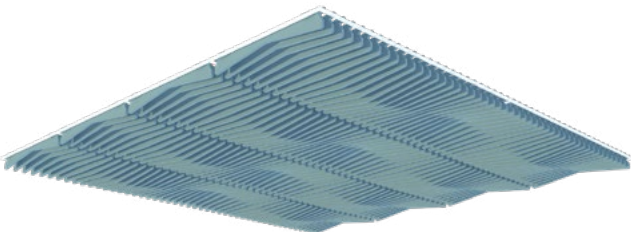
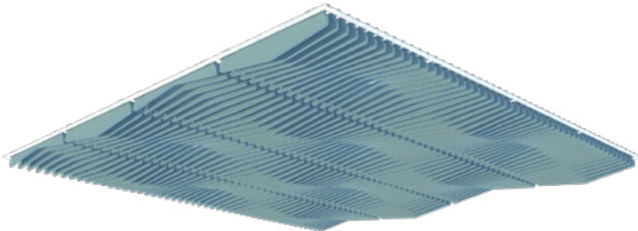
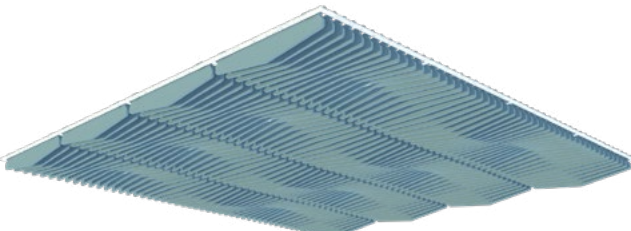
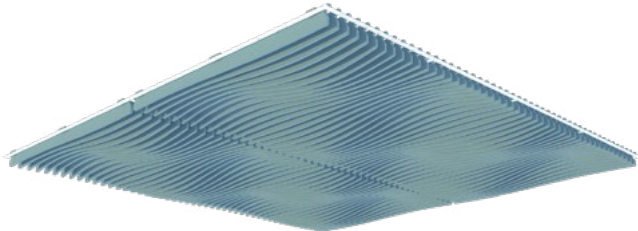
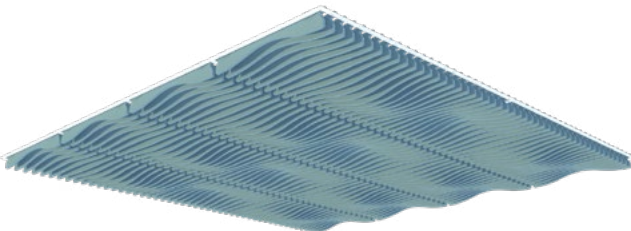
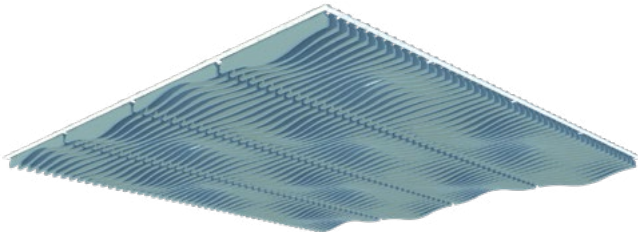
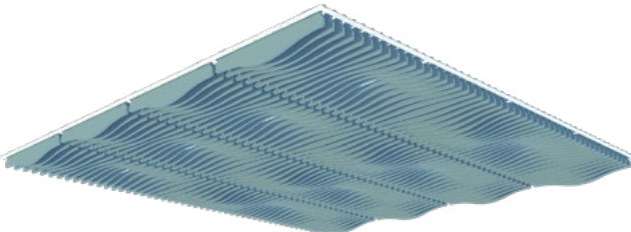
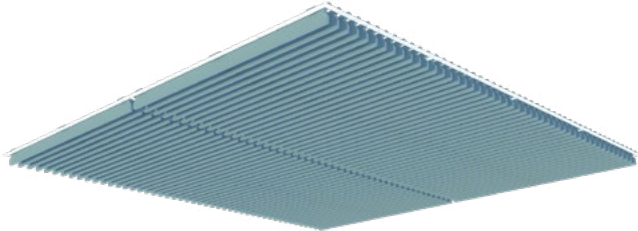
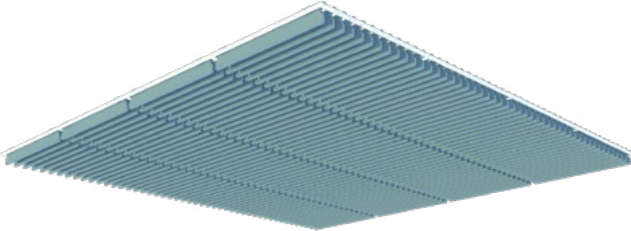
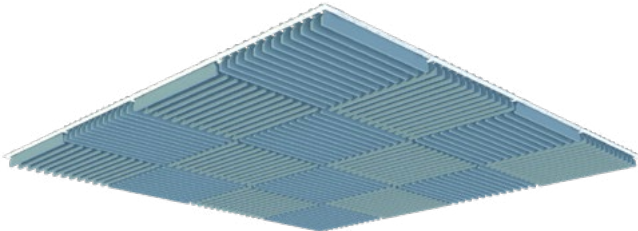
STEP TWO



STEP THREE

PATTERN IDEAS

ROTATE AND REPEAT



ACOUSTICS

NRC values in the United States use the ASTM C423 for an industry wide standard for testing acoustic baffles.

The previous test: ASTM C423-17: "Standard Test Method for Sound Absorption and Sound Absorption Coefficients by the Reverberation Room Method." has been replaced in 2023 with ASTM C423-23.

This latest version removes ambiguity regarding the surface area used to calculate the NRC values.

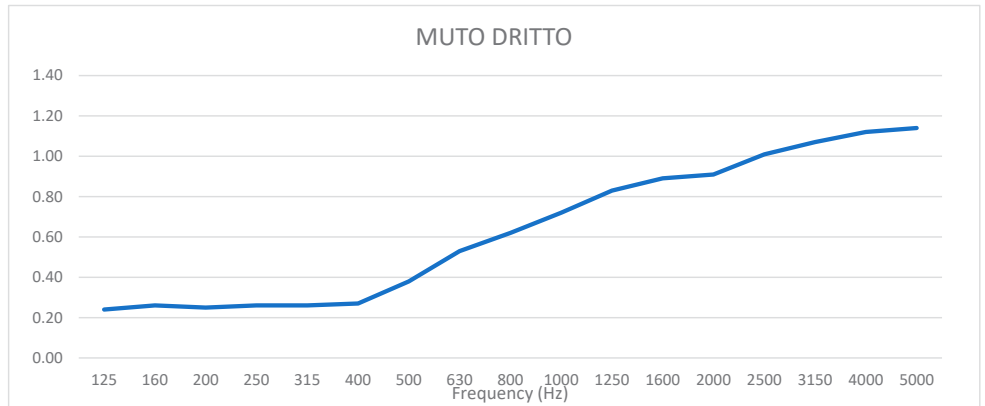
Previous Soelberg NRC values for hanging baffles have used ASTM C423-17 with the total sound absorption divided by the total surface area of the test surface covered by the hanging baffles, including intermediate spaces. This is more conservative than other calculation methods, but is most representative of the intended use of our baffles.

As of July 2023, Soelberg has adapted all of our NRC tests to the latest method: ASTM C423-23.

The new standard is more precise, avoiding the ambiguity inherent in C423-17. The new C423-23 also includes an additional 12" of space in the baffle array for all tests. This was not included in the previous test standard, and may cause the final NRC value to decrease slightly.

Soelberg strives to have the most precise acoustic data possible, and is the first manufacturer to adopt the new standard to our knowledge.

Please confirm that the ASTM C423-23 method was used when comparing competing products.



| DRITTO | SAMPLE FREQUENCY (Hz) | | | | NRC | SAA |
|--------|-----------------------|------|------|------|------|------|
| | 250 | 500 | 1000 | 2000 | | |
| | 0.26 | 0.38 | 0.72 | 0.91 | 0.55 | 0.58 |

APPARENT NRC RATINGS

NRC values are typically used for flat surfaces of a given surface area, e.g. carpet or wall coverings. When rating hanging objects that are spread out, the 'Apparent NRC' is used.

WHAT IS NRC?

NRC is an acronym for Noise Reduction Coefficient. This is a convenient single rating for assessing the absorptency of a material. This can be used to predict its efficacy for reducing reverberation within a room. NRC the absorption coefficients at 125 Hz, 250 Hz, 500 Hz and 1,000 Hz, rounded to the nearest 0.05.

WHY NOT STC?

STC (Sound Transmission Class) is a value used to describe the amount of sound that passes through a barrier. This can be given to a material or an entire wall assembly. If you need to assess how well a barrier can block sound between rooms you'll need to know the STC rating. Acoustic baffles are not used to physically divide rooms, but rather to absorb noise within a room. Problematic noise in a room is called reverberation. This can manifest as droning or ringing sound when people are speaking, or in the worst case: an echo. For this reason, NRC or SAA are the appropriate rating systems for treating reverberation issues.

ENVIRONMENTAL

DECLARE, MINDFUL MATERIALS & GREENGUARD GOLD CERTIFIED

We care about the environment and it matters that our materials support healthy and productive interior spaces. We use innovative materials but ensure that they meet the highest level of standards and expectations.

MUTO PET felt core material is 100% recyclable with no added urea formaldehyde.

