

## MUTO | ACOUSTICAL SLAB PANEL SPECIFICATIONS

You know Soelberg for rich wood grain and cool metallic decorative slab panels to create beautiful flat planes. We now offer a variety of bright textural PET Slab Panels with acoustical function. Take control of the sound in your space with versatile, high-quality MUTO Acoustical Slab Panels.

### PRODUCT SPECIFICATIONS

**Panel Size:** 48" x 110"

**Core Thickness:** 1/2" and 1" thick

**Core Material:** 100% PET Polyester

**Weight:** 1/2 lb / square foot

**Acoustic Rating:** 0.45 - 0.90 NRC

**Fire Rating:** 1/2" is Class A / Class 1 in accordance with ASTM-E84 and 1" core is Class B

**Surface Finish:** Matte

### COLORS

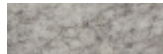
#### 1/2" COLOR OPTIONS



Oatmeal



Camel



Cashmere



Nordic Knit



Graphite



Midnight



Splash



Storm



Lichen



Sunshine



Clementine



Chili Pepper

#### 1" COLOR OPTIONS



Camel



Nordic Knit



Graphite



Lichen

### INSTALLATION

Please visit [www.soelberg.com/muto-slab-panels/](http://www.soelberg.com/muto-slab-panels/) for full installation recommendations.

### CLEANING AND CARE

Vacuum to remove dirt and dust. Remove spills or spots immediately using a clean damp cloth. Carpet and fabric cleaners can also be used to clean. (Always test an inconspicuous area first.)

