

MUTO TASCA

acoustic ceiling solutions

 SOELBERG



MUTO TASCA

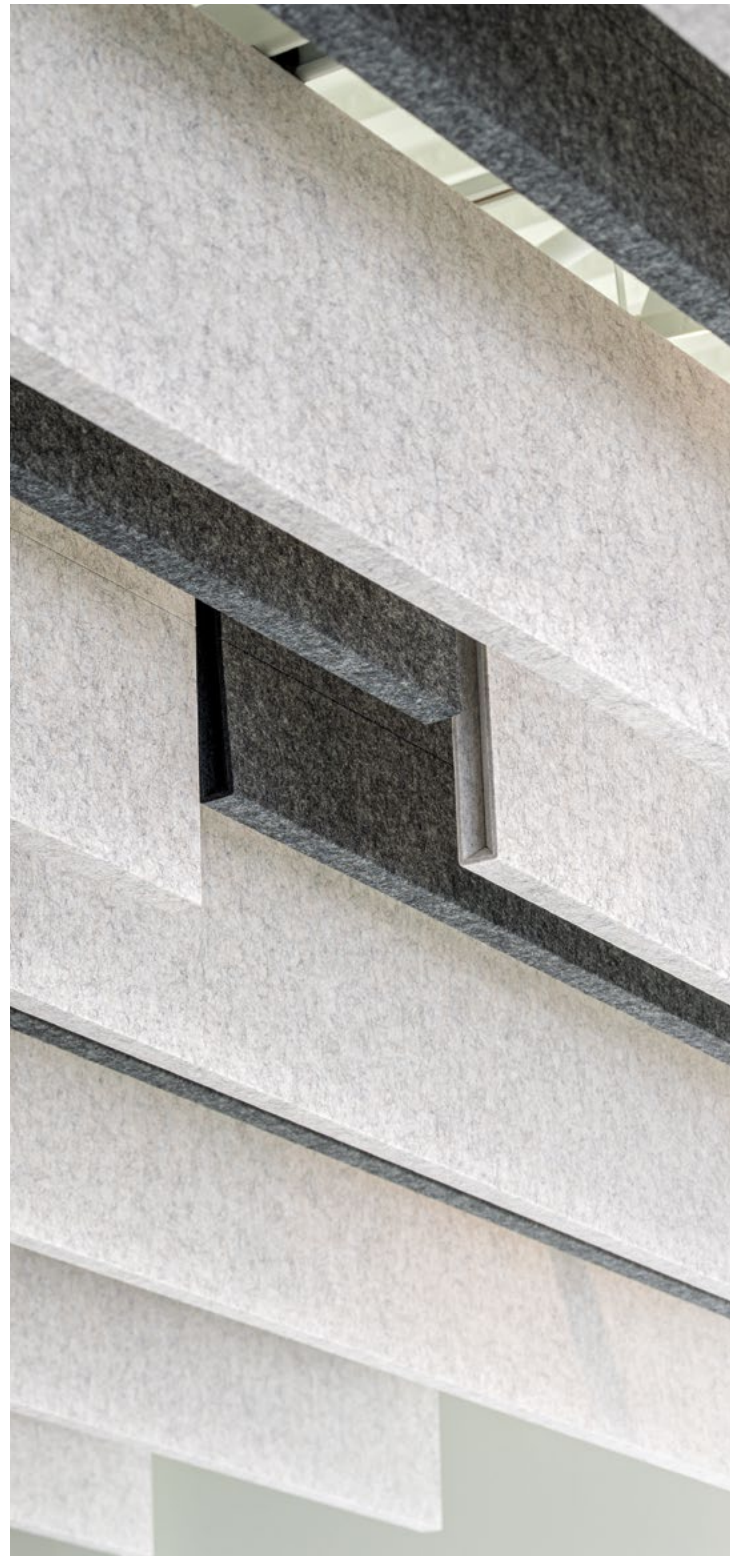
acoustic ceiling solutions

With large open-concept floor plans and fast paced office culture comes noise. MUTO Tasca ceiling baffles are your solution for ceilings that speak softly. Manufactured with a 1/2" folded PET core to create 1" thick baffles, Tasca offers increased rigidity, structure and optimal sound absorption. Maximize sound control with MUTO.

Make It Cool. Make It Quiet.

SPECIFICATION

| | |
|-------------------------|--|
| CONTENT | 100% POLYESTER (PET) FELT |
| CORE THICKNESS | 1/2" (12MM) |
| BAFFLE THICKNESS | 1" FOLDED |
| COLORWAYS | 27 COLORWAYS & 12 WOODED GRAINS |
| SIZE | MIN LENGTH: 24" (NOMINAL) MAX LENGTH: 108" (NOMINAL) DEPTH: 6" OR 10" |
| WEIGHT | 0.5 LB SQUARE FOOT |
| HARDWARE | COUPLER OR STRUTSNAP |
| ACOUSTICS | 0.45 - 0.70 NRC |
| FIRE RATING | CLASS A ASTM - E84 |
| ENVIRONMENTAL | DELICARE, MINDFUL MATERIALS & GREENGUARD GOLD CERTIFIED. MUTO IS PRODUCED FROM 100% RECYCLABLE PET FELT WITH A MINIMUM OF 60% PRE-CONSUMER RECYCLED CONTENT. |
| COLORFASTNESS | IN ACCORDANCE WITH ATCC 16.3 OPTION 3 THE COLOR CHANGE TO LIGHT AT 20 AFU WAS 4.5. |
| FINISH | MATTE |
| APPLICATION | INDOOR USE ONLY |
| LEAD TIME | 2 - 4 WEEKS |
| WARRANTY | 2 YEARS |



MAINTENANCE

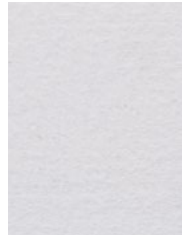
Vacuum to remove dirt and dust. Remove spills or spots immediately using a clean damp cloth. Carpet and fabric cleaners can also be used to clean. (Always test an inconspicuous area first.) Compressed air may be used to dust in difficult or hard-to-reach areas.

To disinfect, bleach can be used in accordance with CDC Cleaning & Disinfection instructions. The solution ratio is 5 tablespoons of bleach to 1 gallon of water | 4 teaspoons of bleach to 1 quart of water. Apply solution by spray and wipe off immediately. (Always test in an inconspicuous area first.)

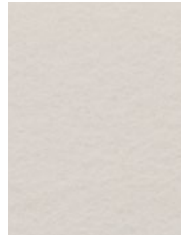
COLOR

MATTE COLOR

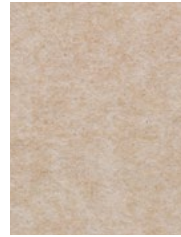
27 STANDARD COLORS
CUSTOM PRINT COLORS AVAILABLE
(CONTACT YOUR LOCAL SALES REP)
100% RECYCLABLE PET FELT



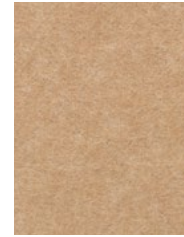
WHITE



BONE



OATMEAL



CAMEL



SAND

TOLERANCES

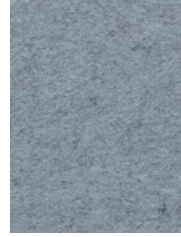
PET felt is made from 100% recyclable polyester plastic. Variation in depth will occur. Slight and consistent variations in color, density, texture are inherent to this core material and should be expected. Color, density and texture will vary by dye lot. MUTO is made with a 'felling' process which results in a textural heathered effect where the fibers consist of multiple tones and shades.



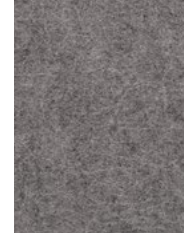
CASHMERE



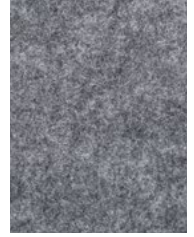
FOG



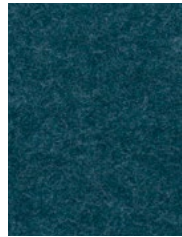
LAMB'S EAR



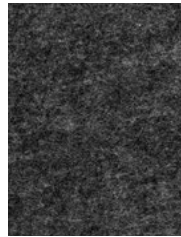
PEWTER



NORDIC KNIT



WINTER WATER



GRAPHITE



BLACK



MIDNIGHT



BLUEBERRY



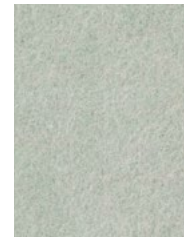
JUNIPER



SPLASH



STORM



SEAFOAM



SAGE



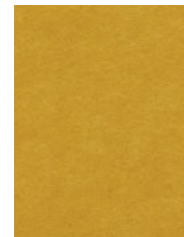
ARTICHOKE



LICHEN



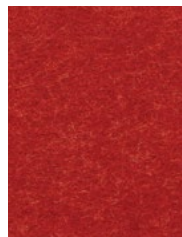
SUNSHINE



QUAKING ASPEN



CLEMENTINE



CHILI PEPPER



CURRANT

WOODED COLOR

MATTE FINISH

8 PRINTED WOODED GRAINS
1/2" CORE THICKNESS

TOLERANCES

PET felt is made from 100% recyclable polyester plastic. Slight and consistent variations in color, density, texture are inherent to this core material and should be expected. Color, density and texture will vary by dye lot. MUTO is made with a 'felling' process which results in a textural heathered effect where the fibers consist of multiple tones and shades.



WHITE WASHED OAK



BLONDE MAPLE



NATURAL ASH



AGED ASH



SMOKED ASH



AMBER ASH



WARM WALNUT



NATURAL WALNUT



BLACK WALNUT



WEATHERED PINE



CARBON WALNUT



CHARRED OAK

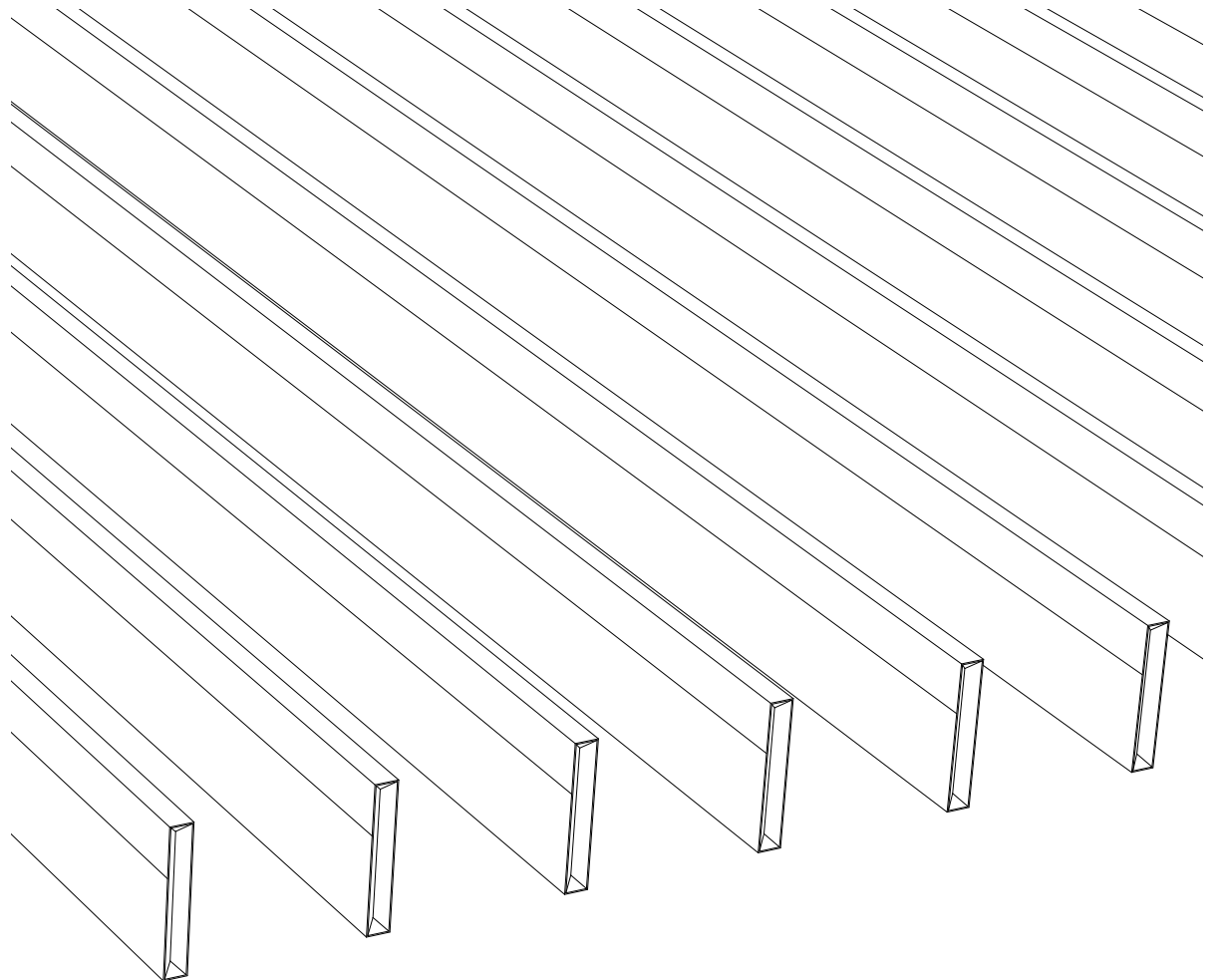
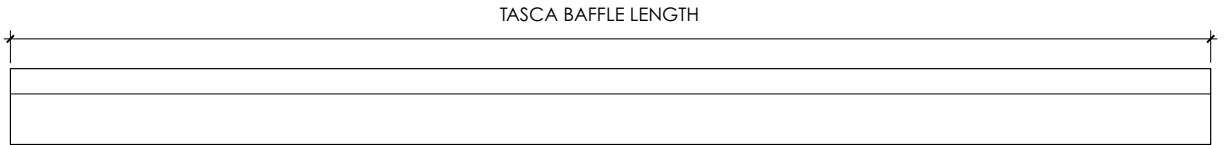
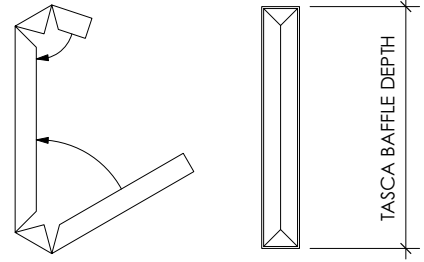
SIZE

BAFFLE DIMENSIONS

LENGTH: 24" - 108"
DEPTH: 6" OR 10"

HARDWARE SPACING

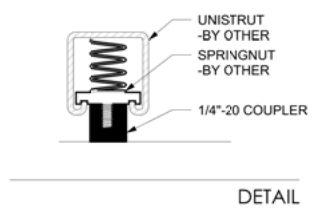
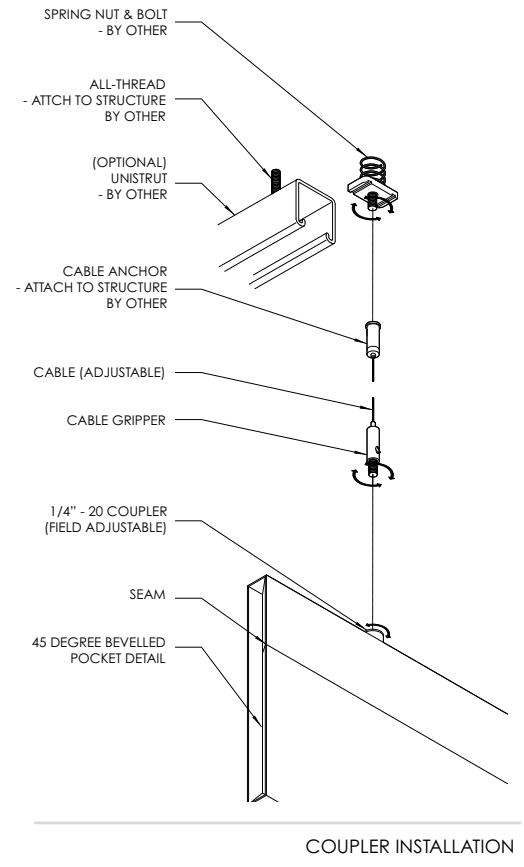
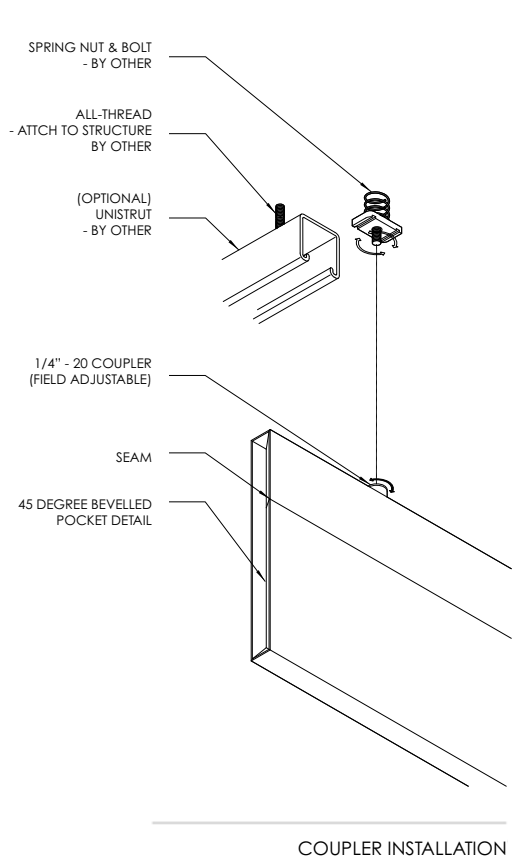
48" TYPICAL SPACING FOR 5' - 8' LENGTH BAFFLES.
60" TYPICAL SPACING FOR LONGER THAN 8'.



HARDWARE

COUPLER CONNECTION

- 1/4" - 20 THREADED COUPLER
- 2 COUPLERS PER BAFFLE
- FACTORY INSTALLED COUPLER
- COUPLER CAN DETACH AND BE RELOCATED IN FIELD
- COUPLER CAN ATTACH TO ANY 1/4" - 20 SYSTEM



HARDWARE CONTINUED

STRUTSNAP CONNECTION

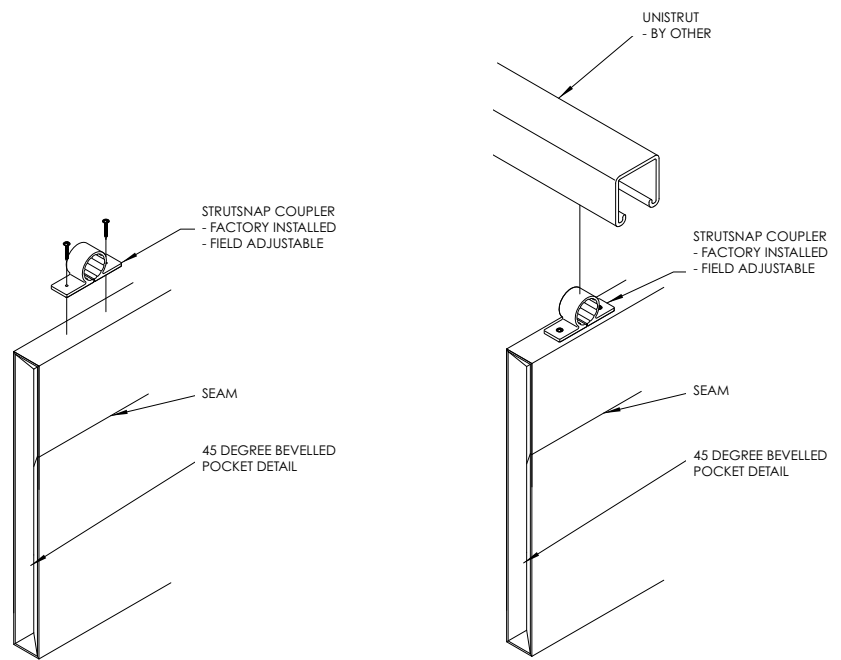
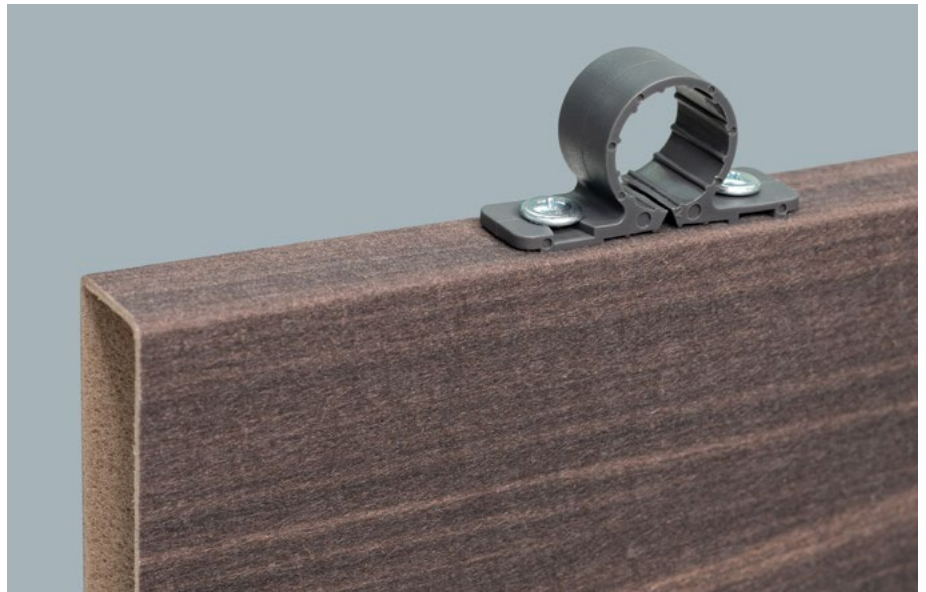
FOR UNISTRUT INSTALLATION

UNISTRUT PROVIDED BY OTHERS

2 STRUTSNAP PER BAFFLE

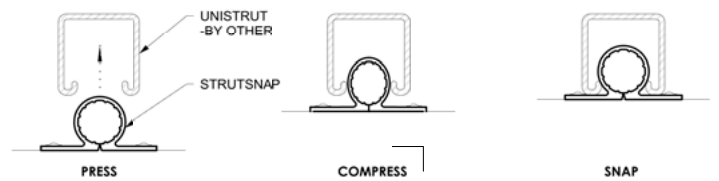
STRUTSNAP CAN DETACH AND BE RELOCATED IN FIELD

STRUTSNAP CAN DETACH AND BE RELOCATED IN FIELD



STRUTSNAP

INSTALLATION



DETAIL: INSTALLATION

ACOUSTICS

NRC values in the United States use the ASTM C423 for an industry wide standard for testing acoustic baffles.

The previous test: ASTM C423-17: "Standard Test Method for Sound Absorption and Sound Absorption Coefficients by the Reverberation Room Method." has been replaced in 2023 with ASTM C423-23.

This latest version removes ambiguity regarding the surface area used to calculate the NRC values.

Previous Soelberg NRC values for hanging baffles have used ASTM C423-17 with the total sound absorption divided by the total surface area of the test surface covered by the hanging baffles, including intermediate spaces. This is more conservative than other calculation methods, but is most representative of the intended use of our baffles.

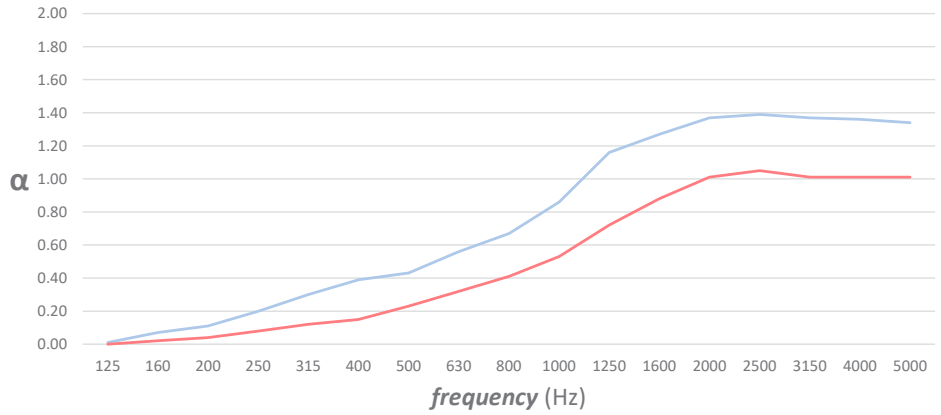
As of July 2023, Soelberg has adapted all of our NRC tests to the latest method: ASTM C423-23.

The new standard is more precise, avoiding the ambiguity inherent in C423-17. The new C423-23 also includes an additional 12" of space in the baffle array for all tests. This was not included in the previous test standard, and may cause the final NRC value to decrease slightly.

Soelberg strives to have the most precise acoustic data possible, and is the first manufacturer to adopt the new standard to our knowledge.

Please confirm that the ASTM C423-23 method was used when comparing competing products.

TASCA baffles



| TASCA | SAMPLE FREQUENCY (Hz) | | | | NRC | SAA |
|-------|-----------------------|------|------|------|------|------|
| | 250 | 500 | 1000 | 2000 | | |
| 10" | 0.20 | 0.43 | 0.86 | 1.37 | 0.70 | 0.73 |
| 6" | 0.08 | 0.23 | 0.53 | 1.01 | 0.45 | 0.46 |

APPARENT NRC RATINGS

NRC values are typically used for flat surfaces of a given surface area, e.g. carpet or wall coverings. When rating hanging objects that are spread out, the 'Apparent NRC' is used.

WHAT IS NRC?

NRC is an acronym for Noise Reduction Coefficient. This is a convenient single rating for assessing the absorbency of a material. This can be used to predict its efficacy for reducing reverberation within a room. NRC the absorption coefficients at 125 Hz, 250 Hz, 500 Hz and 1,000 Hz, rounded to the nearest 0.05.

WHY NOT STC?

STC (Sound Transmission Class) is a value used to describe the amount of sound that passes through a barrier. This can be given to a material or an entire wall assembly. If you need to assess how well a barrier can block sound between rooms you'll need to know the STC rating. Acoustic baffles are not used to physically divide rooms, but rather to absorb noise within a room. Problematic noise in a room is called reverberation. This can manifest as droning or ringing sound when people are speaking, or in the worst case: an echo. For this reason, NRC or SAA are the appropriate rating systems for treating reverberation issues.

ENVIRONMENTAL

DECLARE, MINDFUL MATERIALS & GREENGUARD GOLD CERTIFIED

We care about the environment and it matters that our materials support healthy and productive interior spaces. We use innovative materials but ensure that they meet the highest level of standards and expectations.

MUTO PET felt core material is 100% recyclable with no added urea formaldehyde.



Declare.

MUTO
Soelberg Industries

Final Assembly: Orem, UT, United States of America
Life Expectancy: Life of Structure Year(s)
End of Life Options: Salvageable/Reusable in its Entirety, Recyclable (100%)

Ingredients:
MUTO : Polyester Fiber; Baffle Hardware: Steel

Living Building Challenge Criteria: Compliant

I-13 Red List:
 LBC Red List Free % Disclosed: 100% at 100ppm
 LBC Red List Approved VOC Content: Not Applicable
 Declared

I-10 Interior Performance: CDPH Standard Method v1.2-2017
I-14 Responsible Sourcing: Not Applicable

SOE-0001
EXP: 01 OCT 2024
Original Issue Date: 2020

MANUFACTURED RESPONSIBLE FOR LABEL ACCURACY
INTERNATIONAL LIVING FUTURE INSTITUTE™ living-future.org/declare

